

4

3

2

1

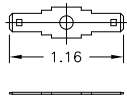
THIS DRAWING IS UNPUBLISHED. RELEASED FOR PUBLICATION
 © COPYRIGHT - BY TYCO ELECTRONICS CORPORATION. ALL RIGHTS RESERVED.

| LOC | DIST | REVISIONS | | | | |
|-----|------|---------------------------|----------|-----|------|--|
| P | LTR | DESCRIPTION | DATE | DWN | APVD | |
| FT | 0 | REVISED PER ECO-08-024419 | 12/23/08 | SS | SM | |

NOTES:

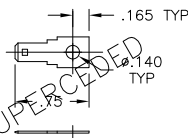
- △ MATERIAL: TIN PLATED, COPPER ALLOY.
- 2. FOR USE WITH .375 CENTERLINE BARRIER STRIPS AND CARDEGE CONNECTORS.

DOUBLE SIDED

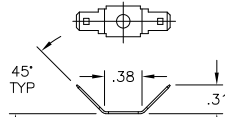


ITEM #1 - CAT NO. QC-40

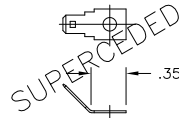
SINGLE SIDED



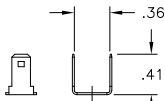
ITEM #4 - CAT NO. QC-43



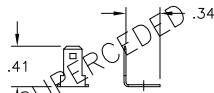
ITEM #2 - CAT NO. QC-41



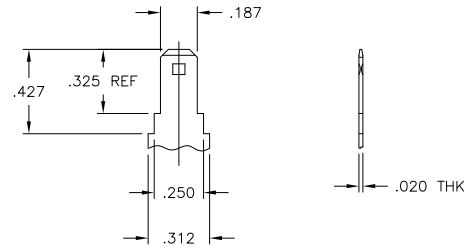
ITEM #5 - CAT NO. QC-44



ITEM #3 - CAT NO. QC-42



ITEM #6 - CAT NO. QC-45



DETAIL OF MALE TAB
SCALE 2:1

| | | | | |
|---------------------------|-------------|----------|-------------|----------|
| SUPERCEDED BY 6-1437644-5 | S.S. 90° | QC-45 | 7-1437402-4 | 6 |
| SUPERCEDED BY 6-1437644-2 | S.S. 45° | QC-44 | 7-1437402-3 | 5 |
| SUPERCEDED BY 5-1437644-8 | S.S. FLAT | QC-43 | 7-1437402-2 | 4 |
| | D.S. 90° | QC-42 | 7-1437402-1 | 3 |
| | D.S. 45° | QC-41 | 7-1437402-0 | 2 |
| | D.S. FLAT | QC-40 | 6-1437402-9 | 1 |
| | DESCRIPTION | CAT. NO. | PART NO. | ITEM NO. |

| DIMENSIONS: | | TOLERANCES UNLESS OTHERWISE SPECIFIED: | | DWN | 20JUN03 | Tyco Electronics | Tyco Electronics Corporation | |
|-------------|--------|--|--------|------------------|---------|------------------|------------------------------|--------------|
| INCHES | | | | CHK | 6/20/03 | | Harrisburg, PA 17105-3608 | |
| 0 PLC | ± .005 | 0 PLC | ± .005 | CHK | 6/20/03 | NAME | QUICK CONNECT TABS | |
| 1 PLC | ± .005 | 1 PLC | ± .005 | APVD | 6/20/03 | | .187 WIDE X .020 THK | |
| 2 PLC | ± .005 | 2 PLC | ± .005 | PRODUCT SPEC | | SIZE | CAGE CODE | DRAWING NO |
| 3 PLC | ± .005 | 3 PLC | ± .005 | APPLICATION SPEC | | | A3 | 00779 |
| 4 PLC | ± .005 | 4 PLC | ± .005 | WEIGHT | | RESTRICTED TO | | |
| ANGLES | ± .005 | ANGLES | ± .005 | CUSTOMER DRAWING | | SCALE | 1:1 | SHEET 1 OF 1 |
| MATERIAL | | FINISH | | | | REV | | A |