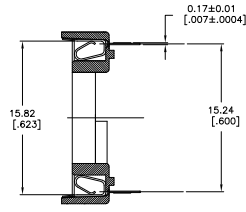
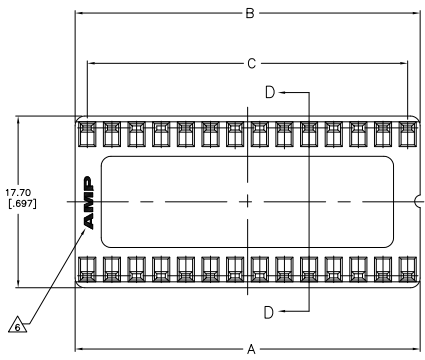
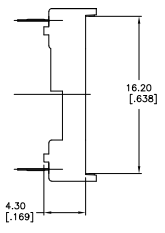
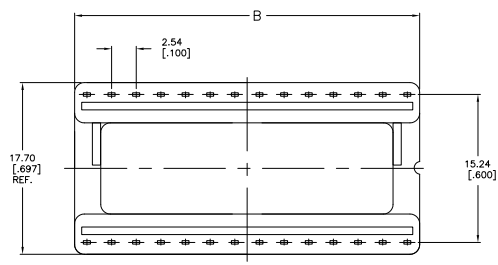
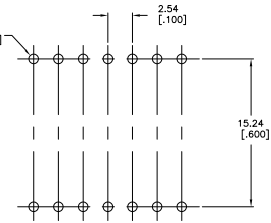
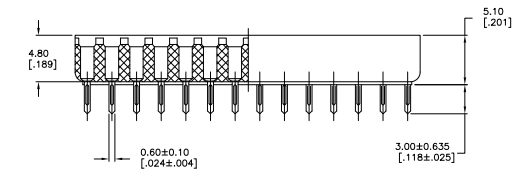


THIS DRAWING IS UNAPPROVED FOR REVISIONS  
 © 2008 BY TYS ELECTRONICS CORPORATION. ALL RIGHTS RESERVED.

REV	DATE	DESCRIPTION	BY	CHK	APP
AD	00				
K		REVISED PER ECO-06-023747			



SECTION D-D



NOTE:-

- △ MATERIAL:  
HOUSING: 30% GLASS FILLED PBT, THERMOPLASTIC, BLACK.  
CONTACT: PHOS BRONZE
- △ FINISH: CONTACT PLATING: TIN-LEAD (60U INCHES MIN.)  
SOLDERABILITY :95% COVERAGE MIN.;  
TEST TEMPERATURE=230°C±5°C  
TEST TIME = 5±5 SECONDS.
- 3. MECHANICAL SPECS:  
DURABILITY: 50 CYCLES MIN.  
INSERTION FORCE:300 GRAMS MAX.  
WITHDRAWAL FORCE: 20 GRAMS MIN.  
CONTACT RETENTION: 500 GRAMS MIN.  
ACCEPTS: 0.20-0.30 [0.008-.012] LEADS
- 4. ELECTRICAL SPECS:  
VOLTAGE RATING: 250V AC,DC  
CONTACT RESISTANCE: 20 MILLOHMS MAX.  
CURRENT RATING: 1 AMPERE AC,DC  
INSULATION RESISTANCE: 1000 MEGOHMS MIN.  
DIELECTRIC WITHSTANDING VOLTAGE: AC 1000 V MIN.
- 5. OPERATING TEMPERATURE: -40°C TO +105°C
- △ AMP LOGO
- △ FINISH: CONTACT PLATING TIN (LEAD FREE); 60 UIN MIN. OVER 30 UIN NI  
SOLDERABILITY :95% COVERAGE MIN.;  
TEST TEMPERATURE=260±5°C;  
TEST TIME = 5±5 SECONDS.

△	24	25.10	.988	27.94	1.100	30.48	1.200	1-390263-7
△	48	55.52	2.19	58.42	2.300	60.96	2.400	1-390263-6
△	42	47.90	1.89	50.08	1.97	53.34	2.100	1-390263-5
△	40	45.36	1.79	48.26	1.900	50.80	2.000	1-390263-4
△	32	35.20	1.39	38.10	1.500	40.64	1.600	1-390263-2
△	28	30.12	1.19	33.02	1.300	35.56	1.400	1-390263-1
△	24	25.10	.988	27.94	1.100	30.48	1.200	390263-7
△	48	55.52	2.19	58.42	2.300	60.96	2.400	390263-6
△	42	47.90	1.89	50.08	1.97	53.34	2.100	390263-5
△	40	45.36	1.79	48.26	1.900	50.80	2.000	390263-4
△	32	35.20	1.39	38.10	1.500	40.64	1.600	390263-2
△	28	30.12	1.19	33.02	1.300	35.56	1.400	390263-1

FINISH POS C±0.15 [0.04] B±0.10 [0.04] A±0.20 [0.08] PART NO.

THIS DRAWING IS A CONTROLLED DOCUMENT	REV	DATE	DESCRIPTION
REVISED PER ECO-06-023747	AD	00	

DESIGNER: [Signature] CHECKED: [Signature] DATE: [Date]

MANUFACTURED BY: TYS ELECTRONICS CORPORATION  
 HARRISBURG, PA 17105-3608

USE: DIP SOCKET, 15.24 CENTERLINE  
 OTC STYLE

SIZE: A1 00779 (C)=390263

CUSTOMER DRAWING