

△ MATERIAL:  
 HOUSING AND COVER ARE HIGH TEMPERATURE THERMOPLASTIC,  
 LIQUID CRYSTAL POLYMER (LCP), COLOR: NATURAL, FOR 1-916783-5 AND 3-916783-5, COVER IS BLACK,  
 LP SLZ LEVER MATERIAL IS STAINLESS STEEL,  
 CONTACT MATERIAL IS COPPER ALLOY.

△ FINISH: CONTACT AREA-GOLD THICKNESS PER TABLE OVER 0.0038[.000150] MIN. THICK NICKEL PLATE.  
 SOLDER TAIL- 0.0038[.000150]-0.00635[.000250] MIN. THICK TIN-LEAD OVER 0.0012[.000050] MIN. THICK NICKEL  
 PLATE. CONTACT AREA SHALL BE FREE OF LUBRICANT.

△ PRODUCT LINE: LOW PROFILE SINGLE LEVER ZIF (LP SLZ), PRODUCT SPEC 108-1572, APPLICATION SPEC 114-1100.

△ PRODUCT LINE: LOW PROFILE SCREWDRIVER ACTUATED ZIF (LP SAZ), PRODUCT SPEC 108-1572-1, APPLICATION SPEC  
 114-1105, INSTRUCTION SHEET 408-3355.

△ PRODUCT CONFORMS TO NOTE △ EXCEPT DURABILITY PER PRODUCT SPECIFICATION IS 20 CYCLES AND SMALL  
 INDENTATIONS IN SCREWDRIVER SLOTS PERMISSIBLE AFTER ACTUATION.

6 DATE CODE MAY VARY IN LOCATION AND FORMAT DEPENDING ON  
 MANUFACTURING LOCATION.

SEE SHEET 6	160	370	2.03 [.080]	0.00076 [.000030]	FLIP CHIP PGA (FC-PGA) OR PPGA	-	LP SAZ △△	6-916783-1	
SEE SHEET 5	160	370	2.79 [.110]	0.00038 [.000015]	PLASTIC PGA (PPGA)	-	LP SAZ △	5-916783-6	
SEE SHEET 5	160	370	2.36 [.093]	0.00038 [.000015]	PLASTIC PGA (PPGA)	-	LP SAZ △	5-916783-5	
SEE SHEET 5	160	370	2.36 [.093]	0.00076 [.000030]	PLASTIC PGA (PPGA)	-	LP SAZ △	5-916783-2	
SEE SHEET 4	160	370	3.56 [.140]	0.00038 [.000015]	PLASTIC PGA (PPGA)	-	LP SAZ △	4-916783-7	
SEE SHEET 4	160	370	2.79 [.110]	0.00038 [.000015]	PLASTIC PGA (PPGA)	-	LP SAZ △	4-916783-6	
SEE SHEET 4	160	370	2.36 [.093]	0.00038 [.000015]	PLASTIC PGA (PPGA)	-	LP SAZ △	4-916783-5	
SEE SHEET 4	160	370	2.36 [.093]	0.00076 [.000030]	PLASTIC PGA (PPGA)	-	LP SAZ △	4-916783-2	
SEE SHEET 3	90	371	2.36 [.093]	0.00038 [.000015]	PLASTIC PGA (PPGA)	LOW PROFILE	LP SLZ △	3-916783-5	
SEE SHEET 3	90	370	2.36 [.093]	FLASH	FLIP CHIP PGA (FC-PGA) OR PPGA	LOW PROFILE	LP SLZ △	1-916783-8	
SEE SHEET 3	60	370	2.36 [.093]	0.00038 [.000015]	FLIP CHIP PGA (FC-PGA) OR PPGA	JOG	LP SLZ △	1-916783-5	
SEE SHEET 2	90	370	2.79 [.110]	FLASH	FLIP CHIP PGA (FC-PGA) OR PPGA	LOW PROFILE	LP SLZ △	2-916783-9	
SEE SHEET 2	90	370	2.36 [.093]	FLASH	FLIP CHIP PGA (FC-PGA) OR PPGA	LOW PROFILE	LP SLZ △	2-916783-8	
SEE SHEET 2	90	370	2.03 [.080]	FLASH	FLIP CHIP PGA (FC-PGA) OR PPGA	LOW PROFILE	LP SLZ △	2-916783-7	
SEE SHEET 2	90	370	2.79 [.110]	0.00038 [.000015]	FLIP CHIP PGA (FC-PGA) OR PPGA	LOW PROFILE	LP SLZ △	2-916783-6	
SEE SHEET 2	90	370	2.36 [.093]	0.00038 [.000015]	FLIP CHIP PGA (FC-PGA) OR PPGA	LOW PROFILE	LP SLZ △	2-916783-5	
SEE SHEET 2	90	370	2.03 [.080]	0.00038 [.000015]	FLIP CHIP PGA (FC-PGA) OR PPGA	LOW PROFILE	LP SLZ △	2-916783-4	
SEE SHEET 2	90	370	2.79 [.110]	0.00076 [.000030]	FLIP CHIP PGA (FC-PGA) OR PPGA	LOW PROFILE	LP SLZ △	2-916783-3	
SEE SHEET 2	90	370	2.36 [.093]	0.00076 [.000030]	FLIP CHIP PGA (FC-PGA) OR PPGA	LOW PROFILE	LP SLZ △	2-916783-2	
SEE SHEET 2	90	370	2.03 [.080]	0.00076 [.000030]	FLIP CHIP PGA (FC-PGA) OR PPGA	LOW PROFILE	LP SLZ △	2-916783-1	
SEE SHEET 2	90	370	3.56 [.140]	0.00076 [.000030]	FLIP CHIP PGA (FC-PGA) OR PPGA	LOW PROFILE	LP SLZ △	2-916783-0	
OBSELETE	-	90	370	2.79 [.110]	FLASH	PLASTIC PGA (PPGA)	SHORT	LP SLZ △	916783-9
OBSELETE	-	90	370	2.36 [.093]	FLASH	PLASTIC PGA (PPGA)	SHORT	LP SLZ △	916783-8
OBSELETE	-	90	370	2.03 [.080]	FLASH	PLASTIC PGA (PPGA)	SHORT	LP SLZ △	916783-7
OBSELETE	-	90	370	2.79 [.110]	0.00038 [.000015]	PLASTIC PGA (PPGA)	SHORT	LP SLZ △	916783-6
OBSELETE	-	90	370	2.36 [.093]	0.00038 [.000015]	PLASTIC PGA (PPGA)	SHORT	LP SLZ △	916783-5
OBSELETE	-	90	370	2.03 [.080]	0.00038 [.000015]	PLASTIC PGA (PPGA)	SHORT	LP SLZ △	916783-4
OBSELETE	-	90	370	2.79 [.110]	0.00076 [.000030]	PLASTIC PGA (PPGA)	SHORT	LP SLZ △	916783-3
OBSELETE	-	90	370	2.36 [.093]	0.00076 [.000030]	PLASTIC PGA (PPGA)	SHORT	LP SLZ △	916783-2
OBSELETE	-	90	370	2.03 [.080]	0.00076 [.000030]	PLASTIC PGA (PPGA)	SHORT	LP SLZ △	916783-1
OBSELETE	-	90	370	2.36 [.093]	0.00076 [.000030]	PLASTIC PGA (PPGA)	SHORT	LP SLZ △	916783-0
OBSELETE	-	90	370	2.03 [.080]	0.00076 [.000030]	PLASTIC PGA (PPGA)	SHORT	LP SLZ △	916783-1
DRAWING	TRAY PACKAGED NUMBER OF SOCKETS PER SHIPPING BOX	POSITIONS	SOLDERTAIL LENGTH DIM A±0.25 [±.010]	MIN GOLD THICKNESS 2?	FC-PGA/PPGA	HANDLE STYLE	PRODUCT LINE	PART NUMBER	

RESTRICTED TO INTEL

OBSELETE  
 OBSELETE  
 OBSELETE  
 OBSELETE  
 OBSELETE  
 OBSELETE  
 OBSELETE  
 OBSELETE  
 OBSELETE

THIS DRAWING IS A CONTROLLED DOCUMENT

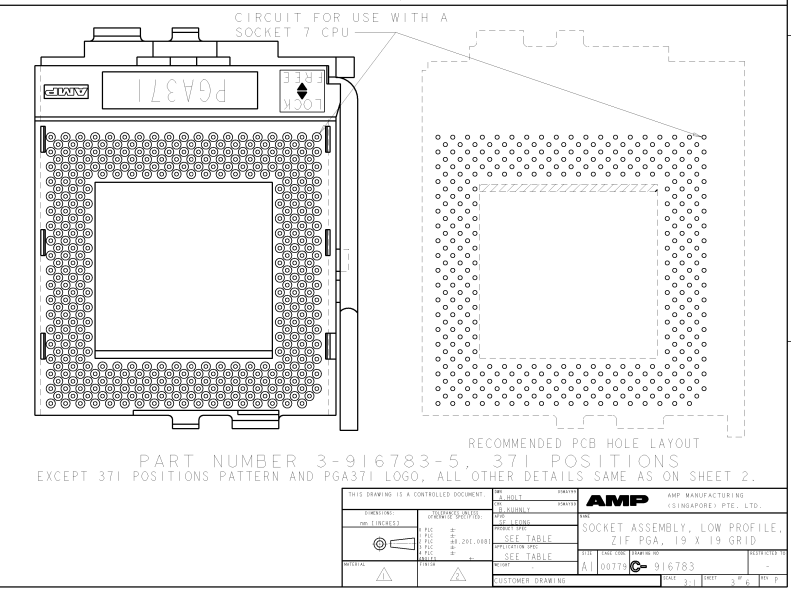
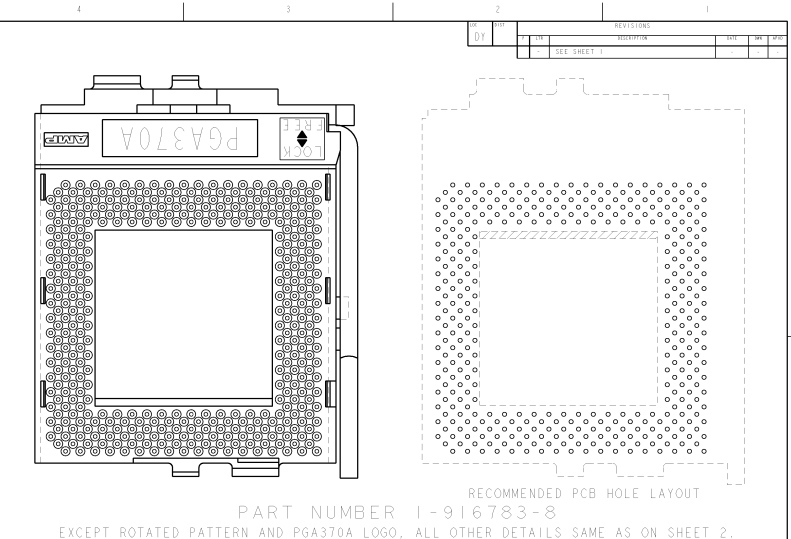
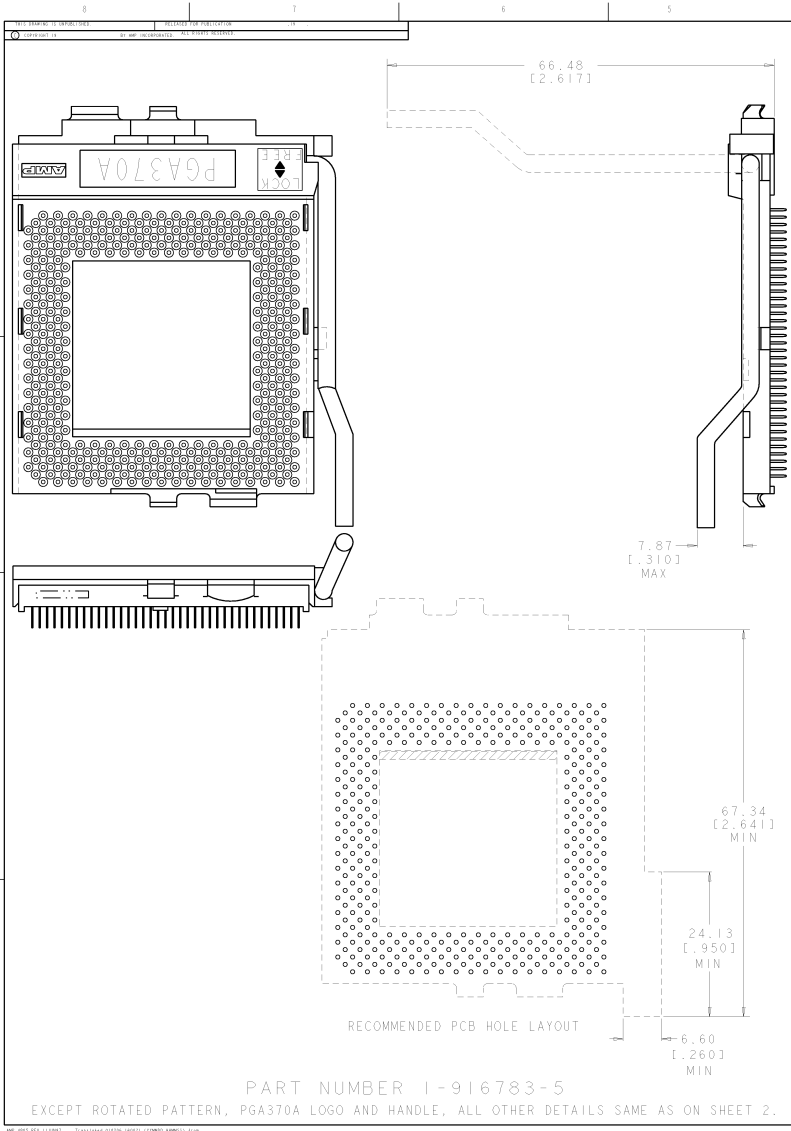
AMP MANUFACTURING (SINGAPORE) PTE. LTD.

SOCKET ASSEMBLY, LOW PROFILE, ZIF PGA, 19 X 19 GRID

AMP 00774 916783

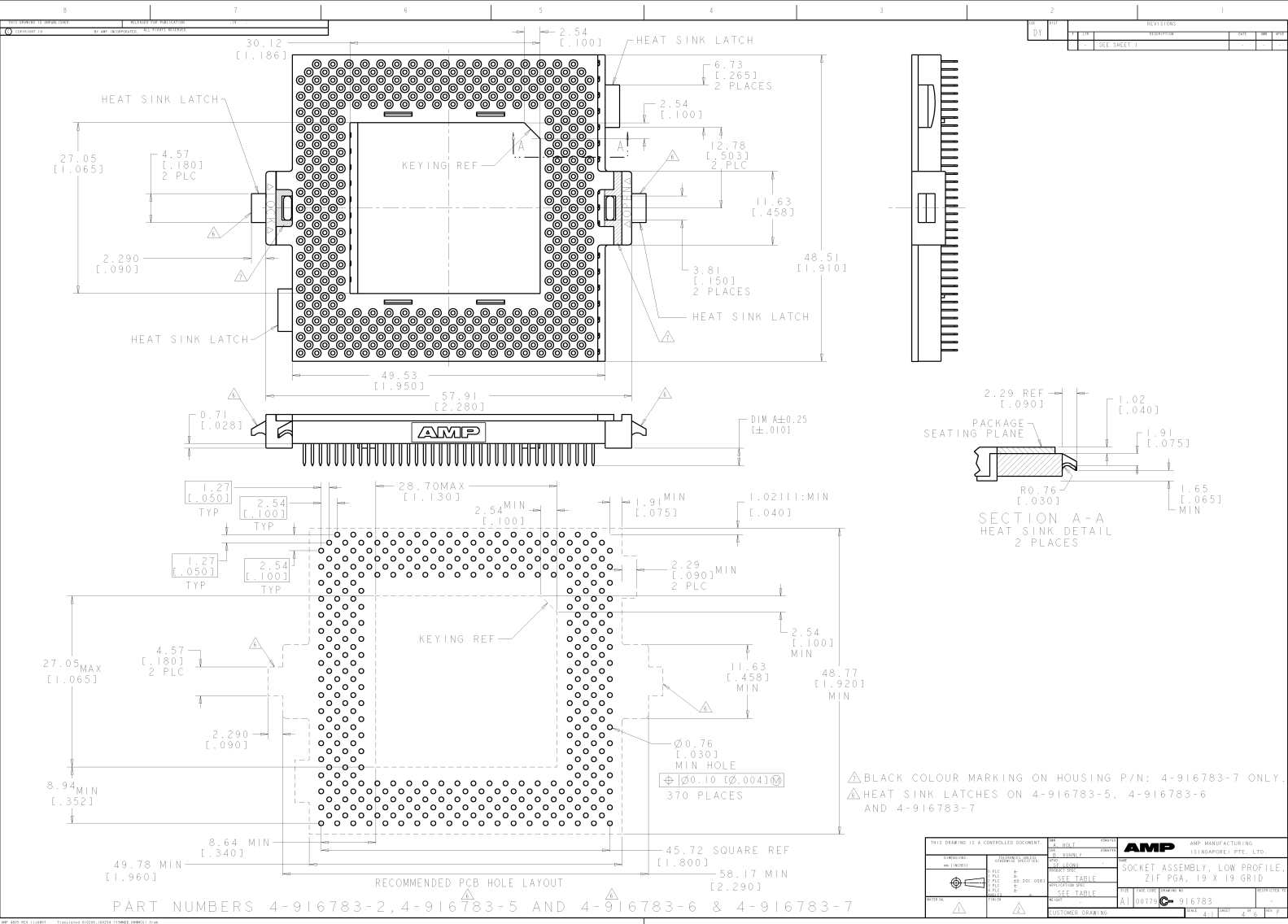
CUSTOMER DRAWING





THIS DRAWING IS A CONTROLLED DOCUMENT		REV. NO.	REV. DATE	REV. BY	REV. REASON	AMP MANUFACTURING (SINGAPORE) PTE. LTD.	
REV. NO.	REV. DATE	REV. BY	REV. REASON	SEE TABLE		SOCKET ASSEMBLY, LOW PROFILE, ZIF PGA, 19 X 19 GRID	
REV. NO.	REV. DATE	REV. BY	REV. REASON	SEE TABLE		PART NO. 00771 PART NO. 916783	
REV. NO.	REV. DATE	REV. BY	REV. REASON	SEE TABLE		PART NO. 00771 PART NO. 916783	
CUSTOMER DRAWING		REV. NO.	REV. DATE	REV. BY	REV. REASON	PART NO. 00771 PART NO. 916783	

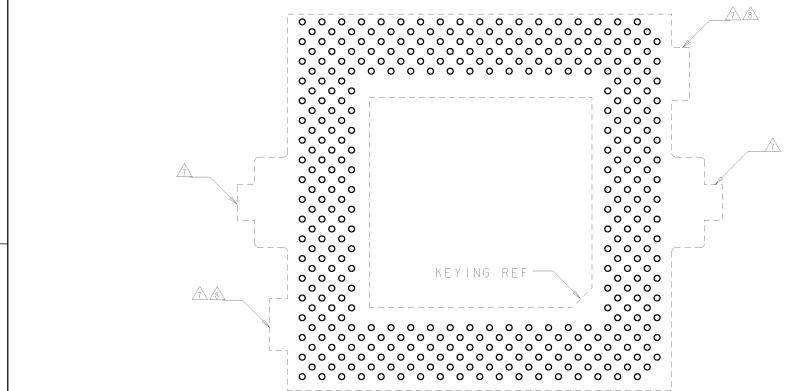
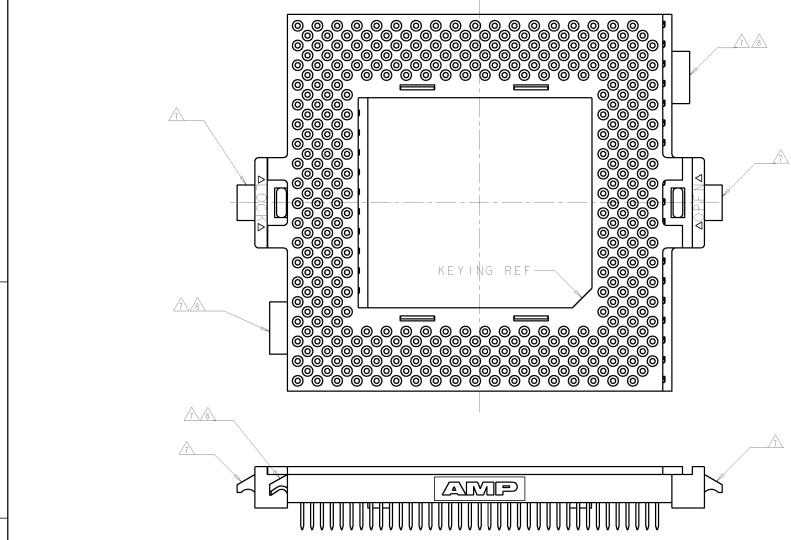
AMP AND AMP LOGO ARE TRADEMARKS OF AMP CORP. ALL RIGHTS RESERVED. AMP CORP. 2000 W. 14TH AVENUE, DENVER, CO 80202, USA. AMP (SINGAPORE) PTE. LTD. 100 CROSS STREET, SINGAPORE 048421.



REV		REVISIONS	
BY	DATE	DESCRIPTION	APP'D

THIS DRAWING IS A CONTROLLED DOCUMENT		REV	DATE	AMP MANUFACTURING (SINGAPORE) PTE. LTD.
APPROVED	DESIGNED	BY	DATE	
DATE	BY	DATE	BY	SOCKET ASSEMBLY, LOW PROFILE, ZIF PGA, 19 X 19 GRID
DATE	BY	DATE	BY	PART NUMBER: 4-916783
DATE	BY	DATE	BY	CUSTOMER DRAWING

8	7	6	5	4	3	2	1
THIS SHEET IS A SEPARATE SHEET	REVISIONS						
BY	DATE	DESCRIPTION	BY	DATE	DESCRIPTION	BY	DATE
		SEE SHEET 1					



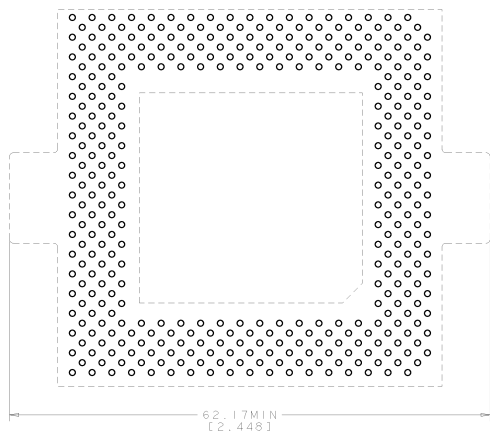
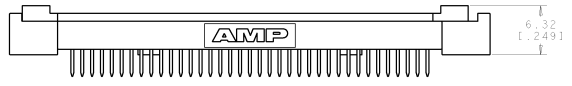
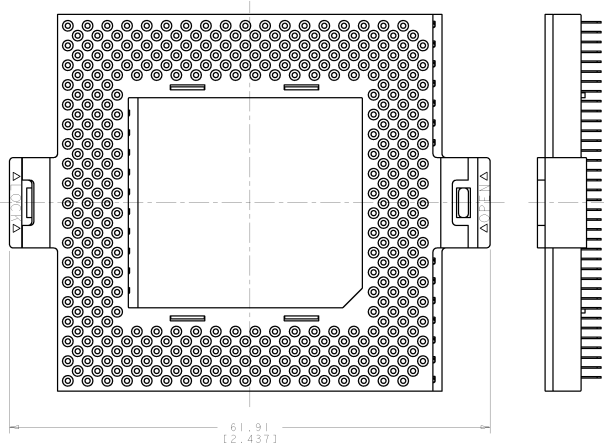
RECOMMENDED PCB HOLE LAYOUT  
 PART NUMBERS 5-916783-2, 5-916783-5 AND 5-916783-6  
 EXCEPT FOR PATTERN AND ROTATED KEYING  
 ALL OTHER DETAILS SAME AS SHEET 4

- 7> HEAT SINK LATCHES ON 5-916783-5 ONLY.
- 8> HEAT SINK LATCHES ON 5-916783-6 ONLY.

THIS DRAWING IS A CONTROLLED DOCUMENT		REV	DATE	AMP MANUFACTURING (SINGAPORE) PTE. LTD.
SYMBOL	DESCRIPTION	BY	DATE	
IN LISTS	SYMBOLS	BY	DATE	SOCKET ASSEMBLY, LOW PROFILE, ZIF PGA, 19 X 19 GRID
REV	DATE	DESCRIPTION	DATE	
REV	DATE	DESCRIPTION	DATE	ALL OTHERS 5-916783
REV	DATE	DESCRIPTION	DATE	
REV	DATE	DESCRIPTION	DATE	CUSTOMER DRAWING

THIS DRAWING IS UNCLASSIFIED  
 UNLESS INDICATED OTHERWISE

REVISED		REVISIONS	
BY	DATE	DESCRIPTION	APP'D
		SEE SHEET 1	



RECOMMENDED PCB HOLE LAYOUT  
 PART NUMBER 6-916783-1  
 EXCEPT FOR PATTERN, ROTATED KEYING, NO HEAT SINK LATCHES AND EXTENDED ACTUATION TABS,  
 ALL OTHER DETAILS SAME AS 4-916783-2

THIS DRAWING IS A CONTROLLED DOCUMENT		REV. 1	DATE	<b>AMP</b> AMP MANUFACTURING (SINGAPORE) PTE. LTD.	
SYMBOL	SYMBOL DESCRIPTION	REV.	DATE	SOCKET ASSEMBLY, LOW PROFILE, ZIF PGA, 19 X 19 GRID	
1	1	1	1	SEE TABLE	
2	2	2	2	SEE TABLE	
3	3	3	3	SEE TABLE	
4	4	4	4	SEE TABLE	
5	5	5	5	SEE TABLE	
6	6	6	6	SEE TABLE	
7	7	7	7	SEE TABLE	
8	8	8	8	SEE TABLE	
9	9	9	9	SEE TABLE	
10	10	10	10	SEE TABLE	
11	11	11	11	SEE TABLE	
12	12	12	12	SEE TABLE	
13	13	13	13	SEE TABLE	
14	14	14	14	SEE TABLE	
15	15	15	15	SEE TABLE	
16	16	16	16	SEE TABLE	
17	17	17	17	SEE TABLE	
18	18	18	18	SEE TABLE	
19	19	19	19	SEE TABLE	
20	20	20	20	SEE TABLE	
21	21	21	21	SEE TABLE	
22	22	22	22	SEE TABLE	
23	23	23	23	SEE TABLE	
24	24	24	24	SEE TABLE	
25	25	25	25	SEE TABLE	
26	26	26	26	SEE TABLE	
27	27	27	27	SEE TABLE	
28	28	28	28	SEE TABLE	
29	29	29	29	SEE TABLE	
30	30	30	30	SEE TABLE	
31	31	31	31	SEE TABLE	
32	32	32	32	SEE TABLE	
33	33	33	33	SEE TABLE	
34	34	34	34	SEE TABLE	
35	35	35	35	SEE TABLE	
36	36	36	36	SEE TABLE	
37	37	37	37	SEE TABLE	
38	38	38	38	SEE TABLE	
39	39	39	39	SEE TABLE	
40	40	40	40	SEE TABLE	
41	41	41	41	SEE TABLE	
42	42	42	42	SEE TABLE	
43	43	43	43	SEE TABLE	
44	44	44	44	SEE TABLE	
45	45	45	45	SEE TABLE	
46	46	46	46	SEE TABLE	
47	47	47	47	SEE TABLE	
48	48	48	48	SEE TABLE	
49	49	49	49	SEE TABLE	
50	50	50	50	SEE TABLE	
51	51	51	51	SEE TABLE	
52	52	52	52	SEE TABLE	
53	53	53	53	SEE TABLE	
54	54	54	54	SEE TABLE	
55	55	55	55	SEE TABLE	
56	56	56	56	SEE TABLE	
57	57	57	57	SEE TABLE	
58	58	58	58	SEE TABLE	
59	59	59	59	SEE TABLE	
60	60	60	60	SEE TABLE	
61	61	61	61	SEE TABLE	
62	62	62	62	SEE TABLE	
63	63	63	63	SEE TABLE	
64	64	64	64	SEE TABLE	
65	65	65	65	SEE TABLE	
66	66	66	66	SEE TABLE	
67	67	67	67	SEE TABLE	
68	68	68	68	SEE TABLE	
69	69	69	69	SEE TABLE	
70	70	70	70	SEE TABLE	
71	71	71	71	SEE TABLE	
72	72	72	72	SEE TABLE	
73	73	73	73	SEE TABLE	
74	74	74	74	SEE TABLE	
75	75	75	75	SEE TABLE	
76	76	76	76	SEE TABLE	
77	77	77	77	SEE TABLE	
78	78	78	78	SEE TABLE	
79	79	79	79	SEE TABLE	
80	80	80	80	SEE TABLE	
81	81	81	81	SEE TABLE	
82	82	82	82	SEE TABLE	
83	83	83	83	SEE TABLE	
84	84	84	84	SEE TABLE	
85	85	85	85	SEE TABLE	
86	86	86	86	SEE TABLE	
87	87	87	87	SEE TABLE	
88	88	88	88	SEE TABLE	
89	89	89	89	SEE TABLE	
90	90	90	90	SEE TABLE	
91	91	91	91	SEE TABLE	
92	92	92	92	SEE TABLE	
93	93	93	93	SEE TABLE	
94	94	94	94	SEE TABLE	
95	95	95	95	SEE TABLE	
96	96	96	96	SEE TABLE	
97	97	97	97	SEE TABLE	
98	98	98	98	SEE TABLE	
99	99	99	99	SEE TABLE	
100	100	100	100	SEE TABLE	

AMP AND AMP LOGO ARE REGISTERED TRADEMARKS OF AMP MANUFACTURING (SINGAPORE) PTE. LTD.