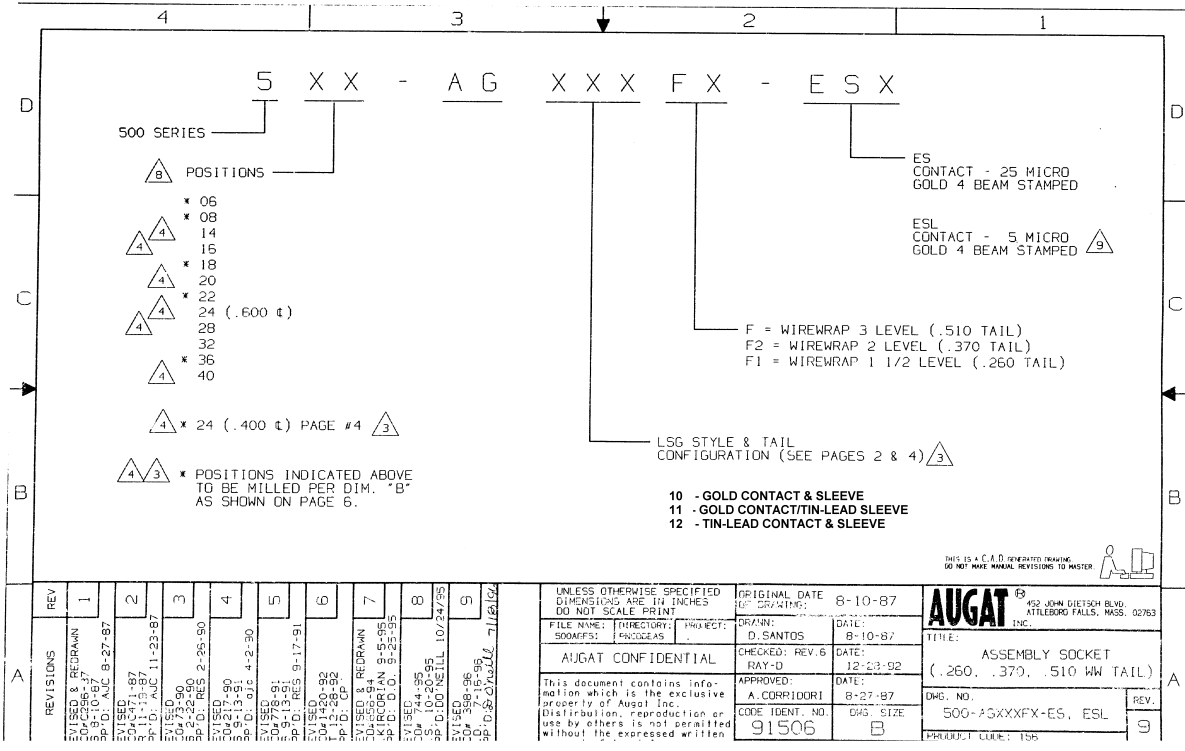


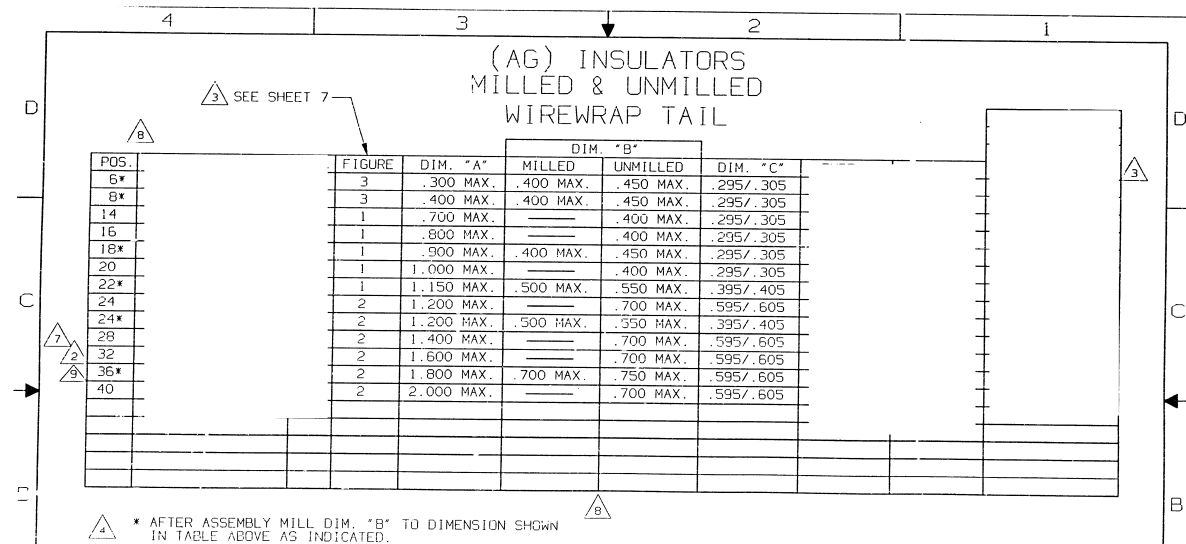
MARKED UP
PRINT
K. WRIGHT
5/8/03



REV	REVISIONS
1	DESIGN & DRAWING BY: J. B. REIDMAN DATE: 8-10-87
2	BY: J. B. REIDMAN DATE: 8-27-87
3	BY: J. B. REIDMAN DATE: 11-23-87
4	BY: J. B. REIDMAN DATE: 2-25-90
5	BY: J. B. REIDMAN DATE: 4-2-90
6	BY: J. B. REIDMAN DATE: 9-17-91
7	BY: J. B. REIDMAN DATE: 9-15-95
8	BY: J. B. REIDMAN DATE: 9-15-95
9	BY: J. B. REIDMAN DATE: 10-24-95
10	BY: J. B. REIDMAN DATE: 10-24-95
11	BY: J. B. REIDMAN DATE: 10-24-95
12	BY: J. B. REIDMAN DATE: 10-24-95
13	BY: J. B. REIDMAN DATE: 10-24-95
14	BY: J. B. REIDMAN DATE: 10-24-95
15	BY: J. B. REIDMAN DATE: 10-24-95
16	BY: J. B. REIDMAN DATE: 10-24-95
17	BY: J. B. REIDMAN DATE: 10-24-95
18	BY: J. B. REIDMAN DATE: 10-24-95
19	BY: J. B. REIDMAN DATE: 10-24-95
20	BY: J. B. REIDMAN DATE: 10-24-95
21	BY: J. B. REIDMAN DATE: 10-24-95
22	BY: J. B. REIDMAN DATE: 10-24-95
23	BY: J. B. REIDMAN DATE: 10-24-95
24	BY: J. B. REIDMAN DATE: 10-24-95
25	BY: J. B. REIDMAN DATE: 10-24-95
26	BY: J. B. REIDMAN DATE: 10-24-95
27	BY: J. B. REIDMAN DATE: 10-24-95
28	BY: J. B. REIDMAN DATE: 10-24-95
29	BY: J. B. REIDMAN DATE: 10-24-95
30	BY: J. B. REIDMAN DATE: 10-24-95
31	BY: J. B. REIDMAN DATE: 10-24-95
32	BY: J. B. REIDMAN DATE: 10-24-95
33	BY: J. B. REIDMAN DATE: 10-24-95
34	BY: J. B. REIDMAN DATE: 10-24-95
35	BY: J. B. REIDMAN DATE: 10-24-95
36	BY: J. B. REIDMAN DATE: 10-24-95
37	BY: J. B. REIDMAN DATE: 10-24-95
38	BY: J. B. REIDMAN DATE: 10-24-95
39	BY: J. B. REIDMAN DATE: 10-24-95
40	BY: J. B. REIDMAN DATE: 10-24-95
41	BY: J. B. REIDMAN DATE: 10-24-95
42	BY: J. B. REIDMAN DATE: 10-24-95
43	BY: J. B. REIDMAN DATE: 10-24-95
44	BY: J. B. REIDMAN DATE: 10-24-95
45	BY: J. B. REIDMAN DATE: 10-24-95
46	BY: J. B. REIDMAN DATE: 10-24-95
47	BY: J. B. REIDMAN DATE: 10-24-95
48	BY: J. B. REIDMAN DATE: 10-24-95
49	BY: J. B. REIDMAN DATE: 10-24-95
50	BY: J. B. REIDMAN DATE: 10-24-95

UNLESS OTHERWISE SPECIFIED DIMENSIONS ARE IN INCHES DO NOT SCALE PRINT	ORIGINAL DATE: 8-10-87	<p>452 JOHN DICKSON BLVD. ATLEBORO FALLS, MASS. 02763</p>
FILE NAME: DIRECTORY: PROJECT: DRAWING: D. SANTOS DATE: 8-10-87	CHECKED: REV. 6 DATE: 12-23-92	
AUGAT CONFIDENTIAL	APPROVED: A. CORRIDORI DATE: 8-27-87	TITLE: ASSEMBLY SOCKET (.260, .370, .510 WW TAIL)
This document contains information which is the exclusive property of Augat Inc. Distribution, reproduction or use by others is not permitted without the expressed written	CODE IDENT. NO. 91506	DWG. NO. 500-ASXXXFX-ES, ESL
		REV. 9

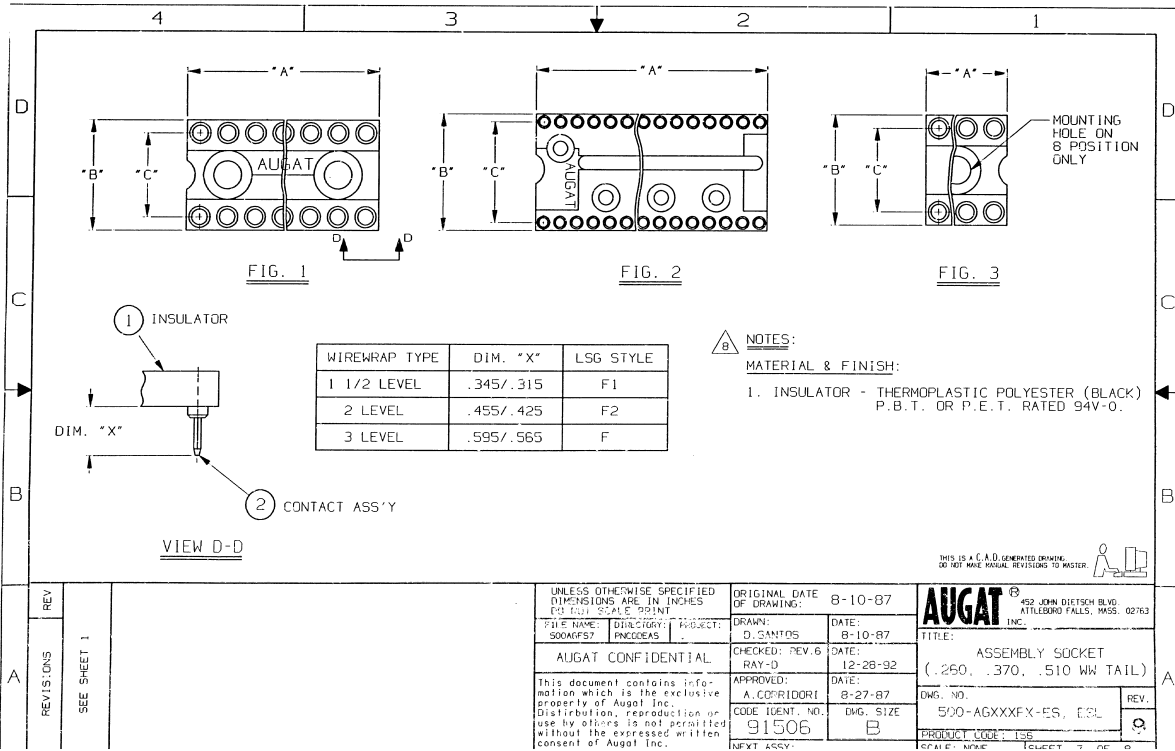
MARKED UP
PRINT
K. WRIGHT
5/8/03



THIS IS A C.A.D. GENERATED DRAWING.
DO NOT MAKE MANUAL REVISIONS TO MASTER

A	REV.		UNLESS OTHERWISE SPECIFIED DIMENSIONS ARE IN INCHES DO NOT SCALE PRINT	ORIGINAL DATE:	8-10-87	 452 JOHN DREW BLVD. ATLEBORO FALLS, MASS. 02763 INC.
	REVISIONS	SEE SHEET 1		FILE NAME: DIRECTORY: PROJECT:	DRAWN:	
			AUGAT CONFIDENTIAL	D. SANTOS	8-10-87	ASSEMBLY SOCKET (.260, .370, .510 WW TAIL)
			This document contains information which is the exclusive property of Augat Inc. Distribution, reproduction or use by others is not permitted without the expressed written consent of Augat Inc.	CHECKED: REV. 6 RAY-D	DATE: 12-28-02	DWG. NO.
				APPROVED:	DATE:	
				A. CORRIGIOPI	8-27-87	REV.
				CODE IDENT. NO.	DWG. SIZE	9
				91506	B	PROJECT CODE: 196

MARKED UP
 PRINT
 K. WRIGHT
 5/8/03



REV	REV
REVISIONS	REV
SEE SHEET 1	REV

UNLESS OTHERWISE SPECIFIED DIMENSIONS ARE IN INCHES TYPICAL DIMENSIONS		ORIGINAL DATE OF DRAWING: 8-10-87	 452 JOHN DITSCHE BLVD. ATLEBORO FALLS, MASS. 02763
FILE NAME: 500MPS7	DWG. NO.: 91506	DATE: 8-10-87	
DWG. NO.: 91506	PROJECT: AUGAT CONFIDENTIAL	CHECKED: REV. 6 RAY-D	TITLE: ASSEMBLY SOCKET (.250, .370, .510 WW TAIL)
This document contains information which is the exclusive property of Augat Inc. Distribution, reproduction or use by others is not permitted without the expressed written consent of Augat Inc.		DATE: 12-28-92	DWG. NO.: 500-AGXXXFX-ES, E3L
		DATE: 8-27-87	REV. 9
		DWG. SIZE: B	PRODUCT CODE: 156
		DATE:	REV. 9