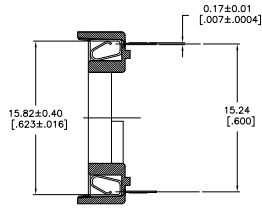
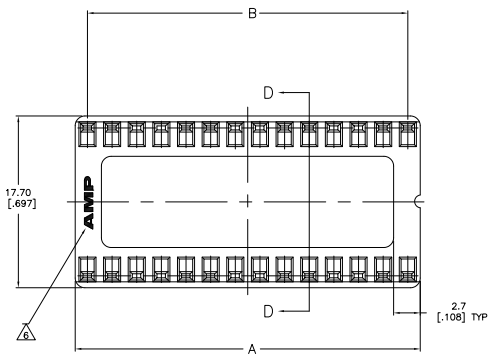
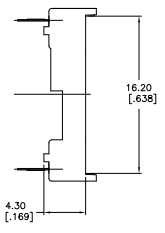
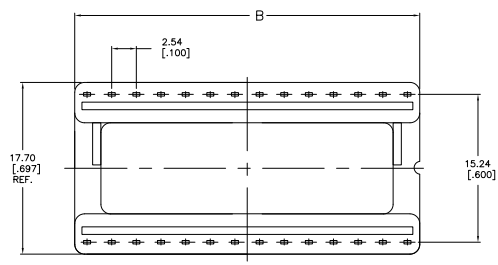
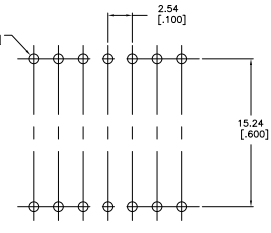
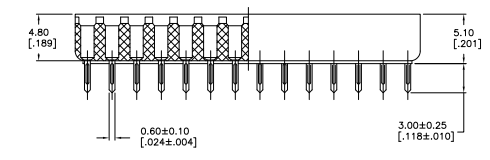


THIS DRAWING IS UNAPPROVED FOR PRODUCTION
 ALL RIGHTS RESERVED

REV	DATE	DESCRIPTION	BY	CHK	APP
AD	00				
NZ		REVISED PER EDD-11-004820			



SECTION D-D



NOTE:

- △ MATERIAL:
HOUSING: 30% GLASS FILLED PBT, THERMOPLASTIC, BLACK.
CONTACT: PHOS BRONZE
- △ FINISH: CONTACT PLATING: TIN-LEAD (60u INCHES MIN.)
SOLDERABILITY :95% COVERAGE MIN.;
TEST TEMPERATURE=230°C±5°C
TEST TIME = 5±5 SECONDS.
- 3. MECHANICAL SPECS:
DURABILITY: 50 CYCLES MIN.
INSERTION FORCE:300 GRAMS MAX.
WITHDRAWAL FORCE: 20 GRAMS MIN.
CONTACT RETENTION: 500 GRAMS MIN.
ACCEPTS: 0.20-0.30 [0.008-.012] LEADS
- 4. ELECTRICAL SPECS:
VOLTAGE RATING: 250V AC,DC
CONTACT RESISTANCE: 20 MILLOHMS MAX.
CURRENT RATING: 1 AMPERE AC,DC
INSULATION RESISTANCE: 1000 MEGOHMS MIN.
DIELECTRIC WITHSTANDING VOLTAGE: AC 1000 V MIN.
- 5. OPERATING TEMPERATURE: -40°C TO +105°C
- △ AMP LOGO
- △ FINISH: CONTACT PLATING TIN (LEAD FREE); 60 UIN MIN. OVER 30 UIN NI
SOLDERABILITY :95% COVERAGE MIN.;
TEST TEMPERATURE=260±5°C;
TEST TIME = 5±5 SECONDS.
- △ OBSOLETE PARTS: OBSOLETE CIS STREAMLINING PER D.RENAUD/D.SINISI

△ OBSOLETE	24	27.94	1.100	30.48	1.200	1-390263-7
△	48	58.42	2.300	60.96	2.400	1-390263-6
△	42	50.80	2.000	53.34	2.100	1-390263-5
△	40	48.26	1.900	50.80	2.000	1-390263-4
△	32	38.10	1.500	40.64	1.600	1-390263-2
△	28	33.02	1.300	35.56	1.400	1-390263-1
△	24	27.94	1.100	30.48	1.200	390263-7
△	48	58.42	2.300	60.96	2.400	390263-6
△	42	50.80	2.000	53.34	2.100	390263-5
△	40	48.26	1.900	50.80	2.000	390263-4
△	32	38.10	1.500	40.64	1.600	390263-2
△	28	33.02	1.300	35.56	1.400	390263-1

SUPERSEDED BY 1-390263-7
 SUPERSEDED BY 1-390263-6
 SUPERSEDED BY 1-390263-5
 SUPERSEDED BY 1-390263-4
 SUPERSEDED BY 1-390263-2
 SUPERSEDED BY 1-390263-1

THIS DRAWING IS A CONTROLLED DOCUMENT. DATE: 08/20/08

INCHES: 1/16, 1/8, 3/16, 1/4, 3/8, 1/2, 5/8, 3/4, 7/8, 1, 1 1/8, 1 1/4, 1 3/4, 2, 2 1/4, 2 3/4, 3, 3 1/4, 3 3/4, 4, 4 1/4, 4 3/4, 5, 5 1/4, 5 3/4, 6, 6 1/4, 6 3/4, 7, 7 1/4, 7 3/4, 8, 8 1/4, 8 3/4, 9, 9 1/4, 9 3/4, 10, 10 1/4, 10 3/4, 11, 11 1/4, 11 3/4, 12

FRONT VIEW: DIMENSIONS: 15.24 CENTERLINE, 0.10 STYLE

DATE: 08/20/08 DRAWING NO: A100779 (C)=390263

CUSTOMER DRAWING