



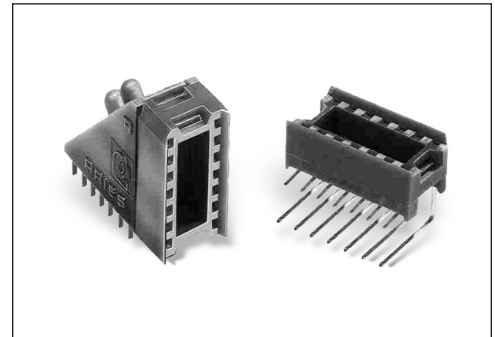
# Series 810 and 822 Economy Model Vertisocket™ with Bifurcated Contacts

## FEATURES

- These low-cost Vertisockets™ are recommended for high-volume vertical display mounting applications
- Very useful for connection of board-to-board jumpers and for DIP switches, as well as LED devices

## GENERAL SPECIFICATIONS

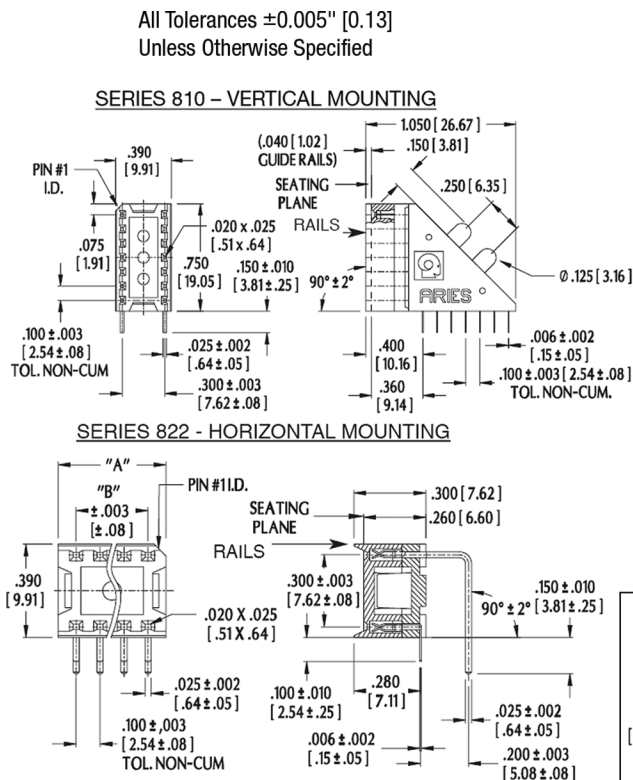
- STANDARD BODY MATERIAL: black UL 94 V-0 4/6 Nylon
- BIFURCATED CONTACTS: Grade-A spring-tempered Phosphor Bronze per QQ-B-750
- STANDARD CONTACT PLATING: 50µ [1.27µ] min. matte Sn per ASTM B545-97 over 50µ [1.27] Ni per QQ-N-290 (TL = 90/10 Sn/Pb per MIL-T-10727 Type 1 over 50µ [1.27] Ni per QQN-290)
- CONTACT CURRENT RATING: 1 amp
- OPERATING TEMPERATURE: 221°F [105°C]
- INSERTION FORCE: 110g/pin average
- WITHDRAWAL FORCE: 75g/pin average
- ACCEPTS FLAT LEADS: up to 0.014 [0.36] thick and 0.020 [0.51] wide
- ACCEPTS ROUND LEADS: up to 0.020 [0.51] dia.
- ACCEPTS LEAD LENGTHS: 0.75-0.160 [1.91-4.06] dia.



**CUSTOMIZATION:** In addition to the standard products shown on this page, Aries specializes in custom design and production. Special materials, platings, sizes, and configurations can be furnished, depending on the quantity. **NOTE:** Aries reserves the right to change product general specifications without notice.

## MOUNTING CONSIDERATIONS

- SUGGESTED PCB HOLE SIZE : For P/N 14-810-90R = 0.036 ± 0.002 [0.91 ± 0.05] dia.  
: For P/N XX-822-90E = 0.044 ± 0.002 [1.12 ± 0.05] dia.



## ORDERING INFORMATION

**14-810-90R XXXX**

Pin Count (see Table)  
Series  
Display Angle  
Options  
WR = Without Rails  
TL = Sn/Pb  
WRTL = Without Rails Sn/Pb

## ORDERING INFORMATION

**XX-822-90 E XXXX**

Pin Count (see Table)  
Series  
Display Angle  
Economy Version  
Options  
WR = Without Rails  
TL = Sn/Pb  
WRTL = Without Rails Sn/Pb

## OTHER SIZES AVAILABLE - CONSULT FACTORY

No. of Pins	Dim. "A"	Dim. "B"
8	8.450 [11.43]	0.300 [7.62]
14	14.750 [19.05]	0.600 [15.24]
16	16.850 [21.59]	0.700 [17.78]
18	18.950 [24.13]	0.800 [20.32]
20	20.1050 [26.67]	0.900 [22.86]



Bristol, PA 19007-6810 USA  
TEL (215) 781-9956 • FAX (215) 781-9845  
WWW.ARIESELEC.COM • INFO@ARIESELEC.COM



13003  
Rev. AA

PRINTOUTS OF THIS DOCUMENT MAY BE OUT OF DATE AND SHOULD BE CONSIDERED UNCONTROLLED