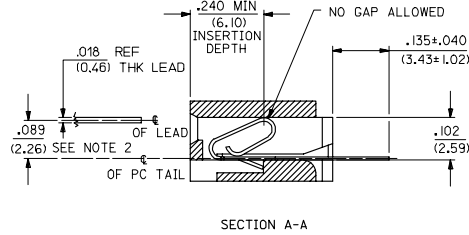
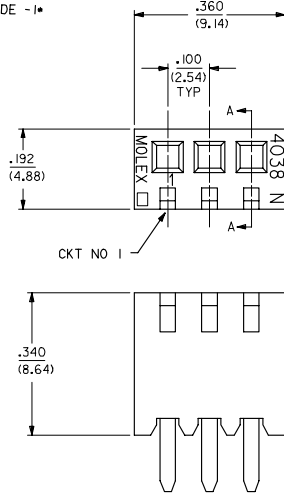
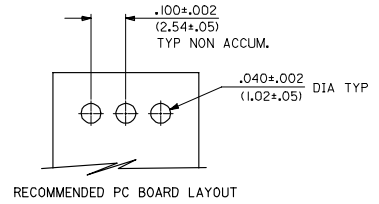


OPTION CODE -1*

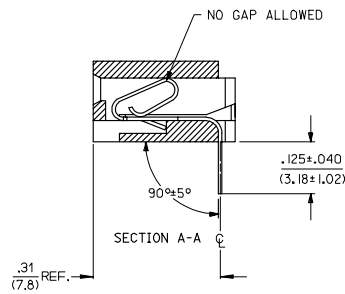
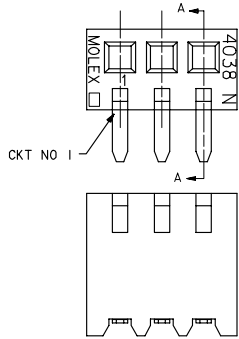


NOTES:

1. MATERIAL: GLASS FILLED POLYESTER 94V-0 COLOR WHITE.
2. PLATINGS:
P909 - HOT TIN DP: .000100/(0.00254) MIN.
* THE PRIMARY SHIPPING CARTON WILL BE LABELED "COMPLIANT TO RoHS DIRECTIVE 2002/95/EC AND ELV ANNEX II OF DIRECTIVE 2000/53/EC". CARTONS WITHOUT THIS LABEL MAY CONTAIN PRODUCT WITH TIN/LEAD PLATING.
3. PRODUCT SPECIFICATION: NONE
4. PACKAGING: BULK
5. TERMINAL TO HOUSING RETENTION FORCE: 3 LBS. MIN.
6. CONNECTORS ARE NOT STACKABLE ON .100/(2.54) CENTERS.
7. TERMINALS CONFORM TO SOLDERABILITY SPECIFICATION SMES-152.
8. .085/(2.16) DIM. WILL VARY DEPENDING ON LEAD THICKNESS.



OPTION CODE -2*



4038-N *
ASSEMBLY OPTION CODE
1= STRAIGHT
2= RIGHT ANGLE
TERMINAL SEE CHART

2	D
1	D1
SHT. REV.	

ADD DIMENSION EC NO. UCP2007-0731 DRAWN BY CHECKED BY APPROVED BY APPR. DATE	QUALITY SYMBOLS ▽=0 ▽=0	GENERAL TOLERANCES (UNLESS SPECIFIED)		DIMENSION STYLE IN/MM	SCALE 1:1	DESIGN UNITS INCH	THIRD ANGLE PROJECTION						
		4 PLACES ±.005 ±.005	3 PLACES ±.010 ±.010	2 PLACES ±.025 ±.014	1 PLACE ±.036 ±.014	ANGULAR ±1/2°	DRAWN BY SAM IEC	DATE 1992/01/10	CHECKED BY PATEL	DATE 1992/01/10	APPROVED BY LENZ	DATE 1992/01/10	TITLE TRANSISTOR SOCKET ASSY 4038 SERIES DWG.
		DRAFT WHERE APPLICABLE MUST REMAIN WITHIN DIMENSIONS		MATERIAL NO. SEE CHART	DOCUMENT NO. SDA-4038	SHEET NO. 1 OF 2	Molex MOLEX INCORPORATED						
		THIS DRAWING CONTAINS INFORMATION THAT IS PROPRIETARY TO MOLEX INCORPORATED AND SHOULD NOT BE USED WITHOUT WRITTEN PERMISSION											

