

REV	DATE	DESCRIPTION	BY	CHK
AD 00				
0	02-02-03	0387 03		144495 [BSV] KW

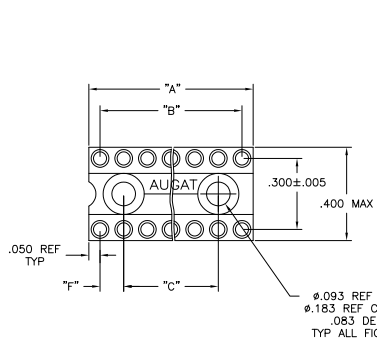


FIG. 1

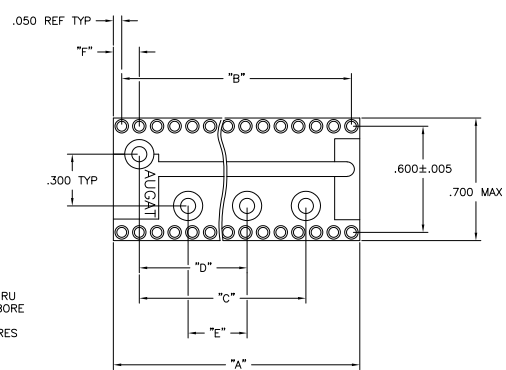


FIG. 2

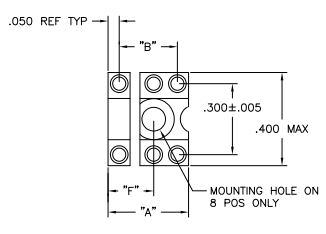


FIG. 3

6 POS MOUNTING HOLE OMITTED

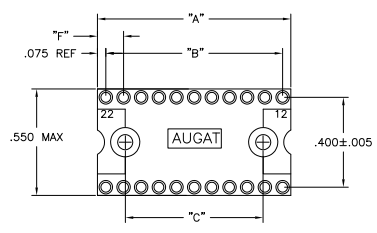
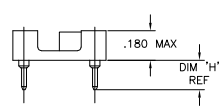
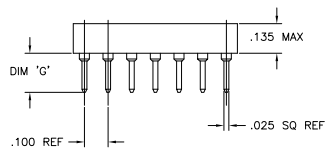


FIG. 4

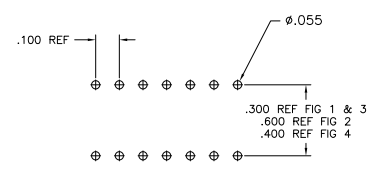


- △ INSULATOR MATERIAL - THERMOPLASTIC POLYESTER, PCT, BLACK, UL94 V-0.
- △ CONTACT - 4 BEAM, BECU, MACHINED (PREMIUM) OR STAMPED (ECONOMY, W/SUFFIX -ES OR -ESL)
- △ SLEEVE - MACHINED COPPER ALLOY.
- △ PLATING: CONTACT -20 μIN MIN. GOLD OVER 30 μIN MIN NICKEL  
SLEEVE -7.5 μIN MIN. GOLD OVER 50 μIN MIN NICKEL
- △ PLATING: CONTACT -20 μIN MIN. GOLD OVER 30 μIN MIN NICKEL  
SLEEVE -80 μIN MIN. TIN-LEAD OVER 50 μIN MIN COPPER
- △ PLATING: CONTACT -20 μIN MIN. GOLD OVER 30 μIN MIN NICKEL  
SLEEVE -180 μIN MIN. TIN-LEAD OVER 50 μIN MIN COPPER
- △ PLATING: CONTACT -80 μIN MIN. TIN-LEAD OVER 75 μIN MIN COPPER  
SLEEVE -80 μIN MIN. TIN-LEAD OVER 50 μIN MIN COPPER
- △ PLATING: CONTACT -80 μIN MIN. TIN-LEAD OVER 75 μIN MIN COPPER  
SLEEVE -180 μIN MIN. TIN-LEAD OVER 50 μIN MIN COPPER
- △ PLATING: CONTACT -5 μIN MIN. GOLD OVER 50 μIN MIN NICKEL  
SLEEVE -7.5 μIN MIN. GOLD OVER 50 μIN MIN NICKEL
- △ PLATING: CONTACT -5 μIN MIN. GOLD OVER 50 μIN MIN NICKEL  
SLEEVE -80 μIN MIN. TIN-LEAD OVER 50 μIN MIN COPPER
- △ PLATING: CONTACT -5 μIN MIN. GOLD OVER 50 μIN MIN NICKEL  
SLEEVE -180 μIN MIN. TIN-LEAD OVER 50 μIN MIN COPPER

**ELECTRICAL:**  
 CONTACT RESISTANCE: 10 MILLIOHMS MAX  
 CONTACT RATING: 3 AMPS  
 CAPACITANCE: 1.0 pF PER MIL-STD-202, METHOD 305  
 INSULATION RESISTANCE: 5000 OHMS MIN @ 500 VDC PER MIL-STD-1344, METHOD 3003.1  
 DIELECTRIC WITHSTANDING VOLTAGE: 1000 VOLTS (RMS) PER MIL-STD-1344, METHOD 3001.1

**MECHANICAL:**  
 AFTER INSERTION FORCE:  
 134 GRAMS AVG (4 BEAM PREMIUM) 179 GRAMS AVG (4 BEAM ECONOMY)  
 AFTER WITHDRAWAL FORCE:  
 63 GRAMS AVG (4 BEAM PREMIUM OR ECONOMY)

**ENVIRONMENTAL:**  
 OPERATING TEMPERATURE: -55°C TO +105°C



P.C.B. HOLE LAYOUT  
 TOLERANCE ±.003

SEE SHEETS 2 & 3 FOR PART NUMBER TABLES

THIS DRAWING IS A CONTROLLED DOCUMENT		REV		DATE	
REVISIONS	DESCRIPTION	BY	CHK	DATE	REV
AD 00					
0	02-02-03	0387	03		144495 [BSV] KW

DESIGNER	DATE	BY	CHK	DATE	REV
DR					
APPROVED	DATE	BY	CHK	DATE	REV

THIS DRAWING IS A CONTROLLED DOCUMENT	REV	DATE	DESCRIPTION
AD 00			
0	02-02-03	0387	03

THIS DRAWING IS A CONTROLLED DOCUMENT	REV	DATE	DESCRIPTION
AD 00			
0	02-02-03	0387	03

OBSOLETE  
 SUPERCEDED BY 7-1437532-0  
 SUPERCEDED BY 5-1437532-9  
 OBSOLETE  
 SUPERCEDED BY 8-1437531-7  
 SUPERCEDED BY 4-1437531-9  
 SUPERCEDED BY 2-1437531-5

FINISH	FIG	H	G	F	E	D	C	B	"A" MAX	NO. OF POSN	PART NO.
△	2	.510	.595/.565	.150	.500	.900	1.500	1.900	2.000	40	6-1437534-9
△	2	.370	.455/.425	.150	.500	.900	1.500	1.900	2.000	40	7-1437534-0
△	2	.510	.595/.565	.150	.500	.900	1.500	1.900	2.000	40	8-1437532-2
△	2	.370	.455/.425	.150	.500	.900	1.500	1.900	2.000	40	7-1437532-9
△	2	.510	.595/.565	.150	.500	.900	1.500	1.900	2.000	40	7-1437532-8
△	2	.510	.595/.565	.150	.500	.900	1.500	1.700	1.800	36	7-1437532-3
△	2	.510	.595/.565	.150	.500	.900	1.500	1.700	1.800	36	7-1437833-0
△	2	.510	.595/.565	.150	.500	.900	1.500	1.700	1.800	36	7-1437532-0
△	2	.370	.455/.425	.150	.400	.900	1.500	1.600	32	6-1437532-4	
△	2	.510	.595/.565	.150	.400	.900	1.500	1.600	32	6-1437532-3	
△	2	.370	.455/.425	.150	.400	.900	1.500	1.600	32	6-1447289-3	
△	2	.510	.595/.565	.150	.400	.900	1.500	1.600	32	5-1437532-9	
△	2	.510	.595/.565	.150	.400	.900	1.300	1.400	28	5-1437534-3	
△	2	.370	.455/.425	.150	.400	.900	1.300	1.400	28	4-1437532-0	
△	2	.510	.595/.565	.150	.400	.900	1.300	1.400	28	3-1437532-9	
△	2	.510	.595/.565	.150	.400	.900	1.300	1.400	28	3-1437532-4	
△	4	.510	.595/.565	.150	.400	.900	1.100	1.200	24	2-1437532-6	
△	4	.510	.595/.565	.150	.400	.900	1.100	1.200	24	2-1437532-4	
△	2	.510	.595/.565	.150	.400	.900	1.100	1.200	24	1-1437532-8	
△	2	.370	.455/.425	.150	.400	.900	1.100	1.200	24	1-1437532-6	
△	2	.510	.595/.565	.150	.400	.900	1.100	1.200	24	1-1437532-5	
△	2	.370	.455/.425	.150	.400	.900	1.100	1.200	24	1-1437532-2	
△	2	.510	.595/.565	.150	.400	.900	1.100	1.200	24	1-1437532-1	
△	1	.510	.595/.565	.175	.400	1.000	1.150	1.22	22	4-1437532-4	
△	1	.510	.595/.565	.175	.400	1.000	1.150	1.22	22	4-1437534-9	
△	1	.510	.595/.565	.175	.400	1.000	1.150	1.22	22	1437532-1	
△	1	.370	.455/.425	.250	.400	.900	1.000	20	8-1437531-8		
△	1	.510	.595/.565	.250	.400	.900	1.000	20	8-1437531-7		
△	1	.370	.455/.425	.250	.400	.900	1.000	20	8-1437531-5		
△	1	.510	.595/.565	.250	.400	.900	1.000	20	8-1437531-4		
△	1	.370	.455/.425	.250	.400	.900	1.000	20	8-1437531-1		
△	1	.510	.595/.565	.250	.400	.900	1.000	20	8-1437531-0		
△	1	.370	.455/.425	.150	.400	.800	.900	18	7-1437531-2		
△	1	.510	.595/.565	.150	.400	.800	.900	18	7-1437531-1		
△	1	.510	.595/.565	.150	.400	.800	.900	18	6-1437531-6		
△	1	.370	.455/.425	.150	.400	.700	.800	16	5-1437531-0		
△	1	.510	.595/.565	.150	.400	.700	.800	16	4-1437531-9		
△	1	.370	.455/.425	.150	.400	.700	.800	16	4-1437531-6		
△	1	.510	.595/.565	.150	.400	.700	.800	16	4-1437531-5		
△	1	.370	.455/.425	.150	.400	.700	.800	16	4-1437531-6		
△	1	.510	.595/.565	.150	.400	.700	.800	16	4-1437531-2		
△	1	.370	.455/.425	.150	.400	.700	.800	16	4-1437531-1		
△	1	.510	.595/.565	.150	.400	.600	.700	14	2-1437531-5		
△	1	.370	.455/.425	.150	.400	.600	.700	14	2-1437531-3		
△	1	.510	.595/.565	.150	.400	.600	.700	14	2-1437531-2		
△	1	.370	.455/.425	.150	.400	.600	.700	14	1-1437531-9		
△	1	.510	.595/.565	.150	.400	.600	.700	14	1-1437531-8		
△	3	.510	.595/.565	.200	.300	.400	.400	8	8-1437529-4		
△	3	.370	.455/.425	.200	.300	.400	.400	8	8-1437529-2		
△	3	.510	.595/.565	.200	.300	.400	.400	8	8-1437529-1		
△	3	.370	.455/.425	.200	.300	.400	.400	8	7-1437529-7		
△	3	.510	.595/.565	.200	.300	.400	.400	8	7-1437529-6		
△	3	.370	.455/.425	.200	.300	.400	.400	8	7-1437529-0		
△	3	.510	.595/.565	.200	.300	.400	.400	8	7-1437529-9		
△	3	.510	.595/.565	.200	.300	.400	.400	8	6-1437529-9		
△	3	.510	.595/.565	.200	.300	.400	.400	8	6-1437529-6		

PREMIUM VERSION PART NUMBERS

SEE SHEET 3 FOR ECONOMY VERSION PART NUMBERS

THIS DRAWING IS A CONTROLLED DOCUMENT		REV	DATE	BY	APP
DRAWING NO.		REV	DATE	BY	APP
REVISIONS		REV	DATE	BY	APP
TYPICAL DIMENSIONS		CLOSED FRAME DIP, PREMIUM LEAD FREE (REF AUGAT 500 SERIES) PREMIUM (MACHINED CONTACT)			
MATERIAL		SEE SPECIFICATION SHEET			
FINISH		SEE SPECIFICATION SHEET			
TOLERANCES		SEE SPECIFICATION SHEET			
DRAWING NO.		DATE	DATE	DATE	DATE
DRAWING NO.		DATE	DATE	DATE	DATE

