

4

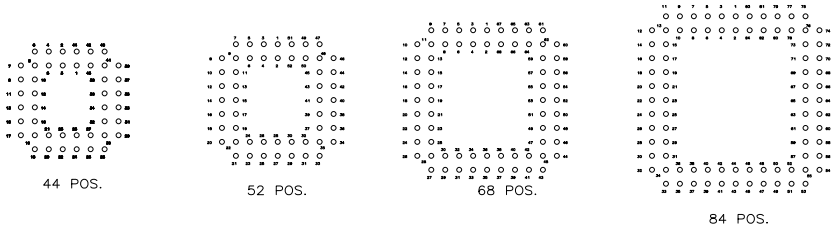
3

2

1

THIS DRAWING IS UNPUBLISHED. RELEASED FOR PUBLICATION. ALL RIGHTS RESERVED.

LOC	DIST	REVISIONS			
F	LNK	DESCRIPTION	DATE	BY	APPD
AD	00				
	D1	REVISED PER ECO-11-004587	11MAR11	RK	HMR

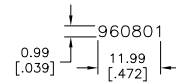


RECOMMENDED HOLE LAYOUT
TOLERANCE: ±0.05[.002] UNLESS OTHERWISE NOTED

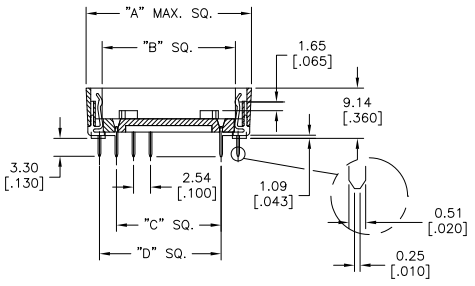
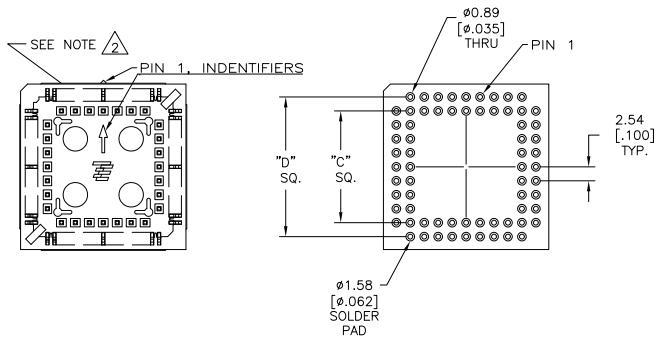
NOTES:

⚠ MATERIALS:
CONTACT: COPPER ALLOY, 0.004572[.000180] MIN TIN PLATE
OVER 0.00127[.000050] MIN NICKEL.
INSULATOR: PPS, 40% GLASS FILLED, UL 94V-0

⚠ DATE CODE (PER BELOW) TO BE LASER CODED
AND CENTERED ON THIS SURFACE.



3. UL RECOGNITION E320916.



PART NO.	POS.	DIM. "A"	DIM. "B"	DIM. "C"	DIM. "D"
1571541-1	44	22.61 [.890]	16.76 [.660]	12.70 [.500]	17.78 [.700]
1571541-2	52	25.15 [.990]	19.30 [.760]	15.24 [.600]	20.32 [.800]
1571541-3	68	30.23 [1.190]	24.38 [.960]	20.32 [.800]	25.40 [1.000]
1571541-4	84	35.31 [1.390]	29.46 [1.160]	25.40 [1.000]	30.48 [1.200]

THIS DRAWING IS A CONTROLLED DOCUMENT.

DIMENSIONS: mm [INCHES]	TOLERANCES UNLESS OTHERWISE SPECIFIED:	DRN D. MURREN 28AUG2003	TE Connectivity
0 PLG ± .1	1 PLG ± .1	CHK K. WRIGHT 24APR03	OUTLINE DRAWING PLCC SOCKET
2 PLG ± .1	3 PLG ± .25 (.010)	APPD K. WRIGHT 24APR03	
4 PLG ± .1	ANGLES ± 1°	PRODUCT SPEC: 108-38000	RESTRICTED TO
MATERIAL FINISH		APPLICATION SPEC: WEIGHT	SIZE CASE CODE DRAWING NO. A2 00779 C=1571541
		CUSTOMER DRAWING	SCALE 2:1 SHEET 1 of 1 REV D1