

4

3

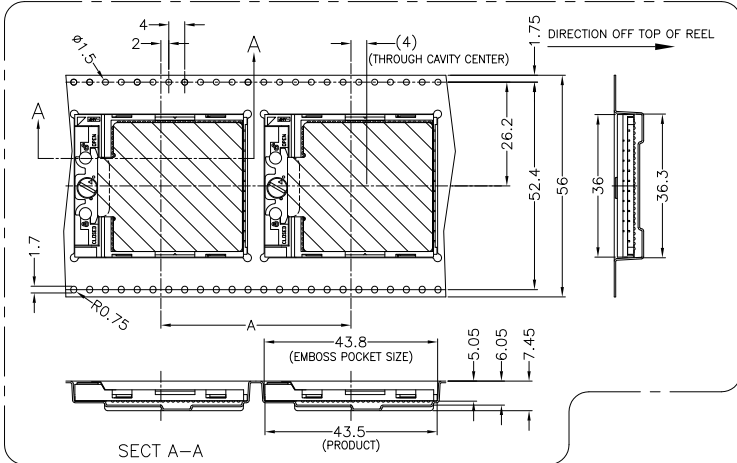
2

1

THIS DRAWING IS UNPUBLISHED. RELEASED FOR PUBLICATION 2001. ALL RIGHTS RESERVED.

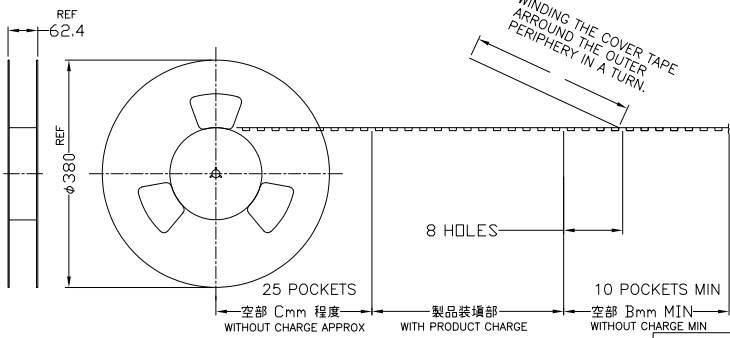
© COPYRIGHT 2001 By -

LOC	DIST	REVISIONS			
P	LTR	DESCRIPTION	DATE	DWN	APVD
K2		REVISED PER ECO-11-005030	11MAR11	RK	HMR



PICK AND PLACE PART DIFFERENCE			
MASK TAPE (50 MICRO) WEIGHT:6.4(g)	MASK TAPE (75 MICRO) WEIGHT:6.4(g)	CAP WEIGHT:7.8(g)	MASK TAPE(CENTER OPENED) (50 MICRO) WEIGHT:6.4(g)

SOCKET TYPE VARIATIONS				
479M STANDARD	478A TYPE STANDARD	478B TYPE STANDARD	478C TYPE STANDARD	479M WITH PEG
479M 180DEG ROTATE	478A TYPE 180DEG ROTATE	478B TYPE 180DEG ROTATE	478C TYPE 180DEG ROTATE	479M WITHOUT PEG



△ MATERIAL
 EMBOSS TAPE : PET
 COVER TAPE : PET
 PROTECTION BAND : PAPER

TAPE AND REEL PACKING AS SHOWN

THIS DRAWING IS A CONTROLLED DOCUMENT.		DWN A.KUBO	20JAN03		TE Connectivity	
DIMENSIONS: MM		CHK S.ABE	21JAN03		PACKING ASSY mPGA47X SOCKET LEAD FREE BALL	
TOLERANCES UNLESS OTHERWISE SPECIFIED:		APVD H.SHIRAI	21JAN03	NAME		
0 PLC ± 0.3		PRODUCT SPEC		108-5744		
1 PLC ± 0.3		APPLICATION SPEC		411-5983		
2 PLC ± 0.3		INSTRUCTION SHEET		SIZE CAGE CODE DRAWING NO		
3 PLC ± 0.3		FINISH		A3 00779 C-1674770		
4 PLC ± 0.3		MATERIAL		WEIGHT SEE TABLE		
ANGLES ± 3°		FINISH		CUSTOMER DRAWING		
MATERIAL		FINISH		SCALE NTS		SHEET 1 of 3
MATERIAL		FINISH		RESTRICTED TO		REV K2

4

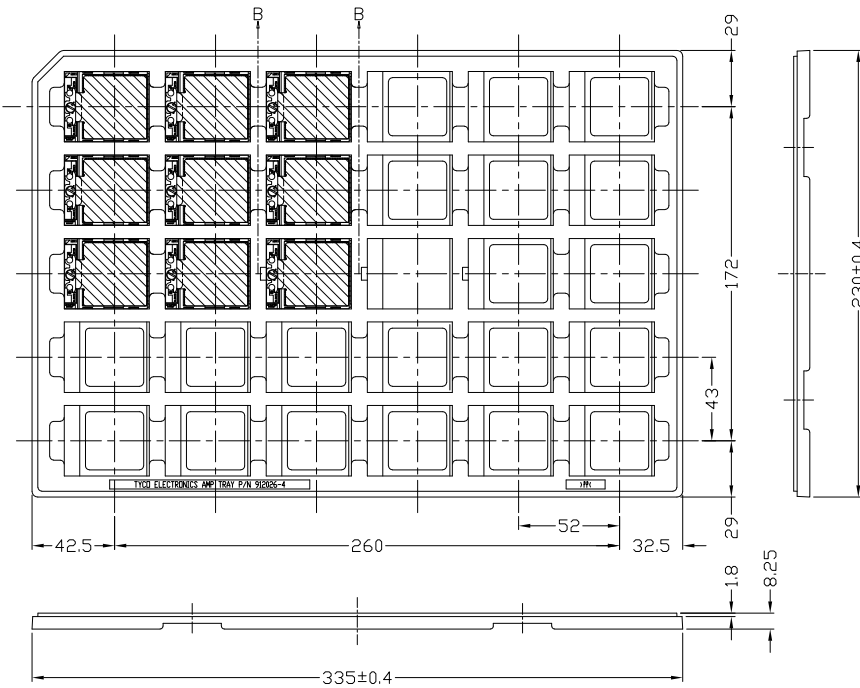
3

2

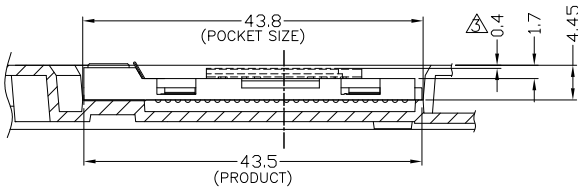
1

THIS DRAWING IS UNPUBLISHED. RELEASED FOR PUBLICATION 2001.
 © COPYRIGHT 2001 By - ALL RIGHTS RESERVED.

LOC	DIST	REVISIONS				
P	LTR	DESCRIPTION	DATE	DWN	APVD	
-	-	SEE SHEET 1	-	-	-	



- △ MATERIAL
PP
- △ IN CASE OF PICK AND PLACE CAP ITEM
- △ OBSOLETE PARTS: OBSOLETE CIS STREAMLINING PER
D.RENAUD/D.SINISI



SECTION B-B
SCALE 2:1

TRAY PACKING
AS SHOWN

THIS DRAWING IS A CONTROLLED DOCUMENT.		DWN			
DIMENSIONS: MM		CHK			
TOLERANCES UNLESS OTHERWISE SPECIFIED:		APVD			
0 PLC ± 0.3		PRODUCT SPEC	NAME		
1 PLC ± 0.3		APPLICATION SPEC	PACKING ASSY		
2 PLC ± 0.3		INSTRUCTION SHEET	mPGA47X SOCKET LEAD FREE BALL		
3 PLC ± 0.3		WEIGHT	SIZE	CAGE CODE	DRAWING NO
4 PLC ± 0.3			A3	00779	1674770
ANGLES ± 3°		CUSTOMER DRAWING	RESTRICTED TO		
FINISH		SCALE		SHEET	REV
△		NTS		2 of 3	K2



4

3

2

1

THIS DRAWING IS UNPUBLISHED. RELEASED FOR PUBLICATION 2001.
 © COPYRIGHT 2001 By - ALL RIGHTS RESERVED.

LOC	DIST	REVISIONS				
P	LTR	DESCRIPTION	DATE	DWN	APVD	
-	-	SEE SHEET 1	-	-	-	

QTY	DESCRIPTION	UNIT	WEIGHT (kg)	LENGTH (mm)	WIDTH (mm)	HEIGHT (mm)	DEPTH (mm)	DIAMETER (mm)	SOCKET QTY PER TRAY OR REEL	SOCKET TYPE / VIS REF. ONLY	SALEABLE PART NO.	NAME	
160	7-1674772-2		1.88	1400	560	56			160	7-1674772-2	7-1674770-2	478B TYPE 180 DEGREE ROTATE	
160	6-1674772-2		1.88	1400	560	56			160	6-1674772-2	6-1674770-2	478A TYPE 180 DEGREE ROTATE	
160	5-1674772-2		1.88	1400	560	56			160	5-1674772-2	5-1674770-2	479M STD 180 DEGREE ROTATE	
30	4-1674772-4		0.354						30	4-1674772-4	4-1674770-4	479M W/PEG	
30	4-1674772-3		0.312						30	4-1674772-3	4-1674770-3	479M W/PEG	
30	4-1674772-2		0.354						30	4-1674772-2	4-1674770-2	479M W/PEG	
30	4-1674772-1		0.312						30	4-1674772-1	4-1674770-1	479M W/PEG	
30	3-1674772-3		0.354						30	3-1674772-3	3-1674770-3	478C TYPE	
30	3-1674772-2		0.312						30	3-1674772-2	3-1674770-2	478C TYPE	
30	3-1674772-1		1.88	1400	560	56			30	3-1674772-1	3-1674770-1	478B STD. BLACK	
30	2-1674772-9		0.354						30	2-1674772-9	2-1674770-9	478B STD. BLACK	
30	2-1674772-6		0.354						30	2-1674772-6	2-1674770-6	478B STD. BLACK	
30	2-1674772-4		0.312						30	2-1674772-4	2-1674770-4	478B STD. Cover: PURPLE	
160	2-1674772-2		1.88	1400	560	56			160	2-1674772-2	2-1674770-2	478B TYPE	
160	2-1674772-1		1.88	1400	560	56			160	2-1674772-1	2-1674770-1	478B TYPE	
160	1-1674772-5		2.13	1400	560	56			160	1-1674772-5	1-1674770-5	478A STD. Cover: YELLOW	
160	1-1674772-4		1.88	1400	560	56			160	1-1674772-4	4-1674770-6	478A STD. Cover: YELLOW	
30	1-1674772-2		0.312						30	1-1674772-2	1-1674770-5	478A TYPE	
30	1-1674772-1		1.88	1400	560	56			30	1-1674772-1	1-1674770-2	478A TYPE	
30	4-1674772-5		0.312						30	4-1674772-5	4-1674770-5	479M STANDARD	
30	1674772-3		0.354						30	1674772-3	1674770-9	479M STANDARD	
30	1674772-2		0.312						30	1674772-2	1674770-8	479M STANDARD	
30	1674772-1		0.312						30	1674772-1	1674770-7	479M STANDARD	
200	1674772-3		2.42	1200	480	48		200	1674772-3	1674770-6	479M STANDARD		
200	1674772-2		2.14	1200	480	48		200	1674772-2	1674770-5	479M STANDARD		
200	1674772-1		2.14	1200	480	48		200	1674772-1	1674770-4	479M STANDARD		
160	1674772-3		2.13	1400	560	56		160	1674772-3	1674770-3	479M STANDARD		
160	1674772-2		1.88	1400	560	56		160	1674772-2	1674770-2	479M STANDARD		
160	1674772-1		1.88	1400	560	56		160	1674772-1	1674770-1	479M STANDARD		
	PACKING	REMARKS	WEIGHT(kg)	C	B	A				SOCKET QTY PER TRAY OR REEL	SOCKET TYPE / VIS REF. ONLY	SALEABLE PART NO.	NAME

THIS DRAWING IS A CONTROLLED DOCUMENT.

DIMENSIONS: MM	TOLERANCES UNLESS OTHERWISE SPECIFIED: 0 PLC ± 0.3 1 PLC ± 0.3 2 PLC ± 0.3 3 PLC ± 0.3 4 PLC ANGLES ± 0.3	DWN	CHK	APVD	NAME
	FINISH ± 0.05	PRODUCT SPEC	STE TE Connectivity		
MATERIAL		APPLICATION SPEC	PACKING ASSY		
		INSTRUCTION SHEET	mPGA47X SOCKET LEAD FREE BALL		
		WEIGHT	SIZE	CAGE CODE	DRAWING NO
			A3	00779	C-1674770
		CUSTOMER DRAWING	RESTRICTED TO	SCALE	SHEET
				NTS	3 of 3
				REV	K2