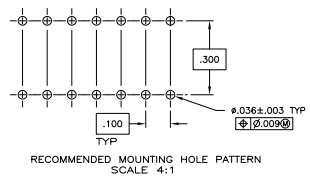
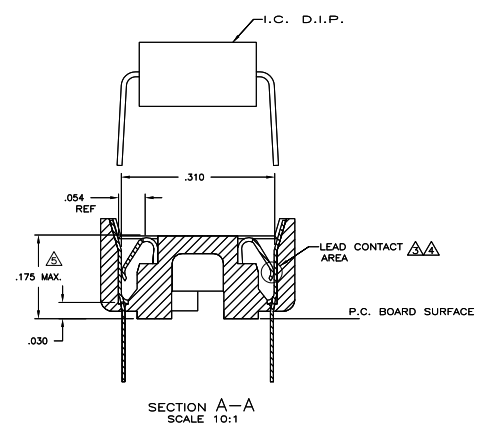
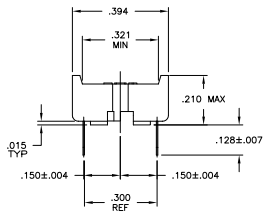
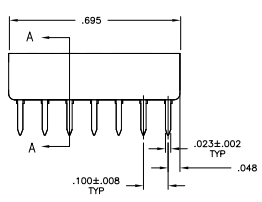
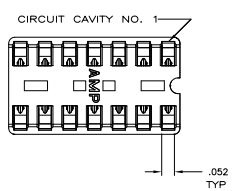


THIS DRAWING IS UNPUBLISHED  
 ALL RIGHTS RESERVED

REV	DATE	DESCRIPTION	BY	CHK
0				
1	12MAR11	REVISED PER ECO-11-005927	RK	HMR

- RECEPTACLE ACCEPTS A .008-.014 THICK I.C. LEAD.
- TUBE LOADED FOR AUTOMATIC INSERTION.
- TWO .00030 MIN THK. GOLD STRIPES IN CONTACT AREA WITH TIN-LEAD (93/7) ON CONTACT LEGS, BALANCE OF CONTACT NICKEL PLATED.
- TWO .00015 MIN THK. GOLD STRIPES IN CONTACT AREA WITH TIN-LEAD (93/7) ON CONTACT LEGS, BALANCE OF CONTACT NICKEL PLATED.
- MAXIMUM DIMENSION FOR I.C. SEATING PLANE.



△	PHOS.BRZ. .008 THK	GLASS-FILLED THERMOPLASTIC, 94V-O, BLACK	2-640357-4
SUPSD BY 390261-3	TINNED	GLASS-FILLED THERMOPLASTIC, 94V-O, BLACK	2-640357-3
DISSOLEIB	△	BE.CU. .008 THK	GLASS-FILLED THERMOPLASTIC, 94V-O, BLACK
SUPSD BY 390261-3	TINNED	BE.CU. .008 THK	GLASS-FILLED THERMOPLASTIC, 94V-O, BLACK
	CONTACT FINISH	CONTACT MAT'L	HOUSING MATERIAL
			PART NO.

THIS DRAWING IS A CONTROLLED DOCUMENT		REV	DATE	BY	CHK
DESIGNED	DESIGNED	108-1066			
DRAWN	DRAWN	114-1049			
CHECKED	CHECKED				
APPROVED	APPROVED				

TE Connectivity	SOCKET ASSY, DIP, 14 PINS, DIPLOMATE DL
DATE	100779
SIZE	6:1
SHEET	1
TOTAL	1