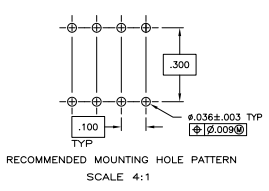
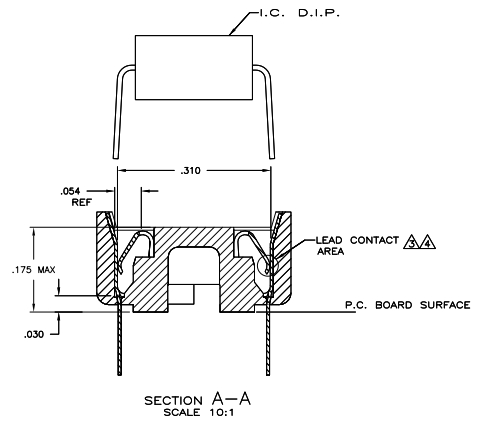
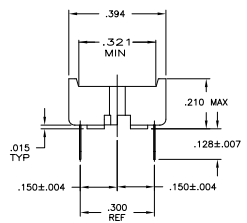
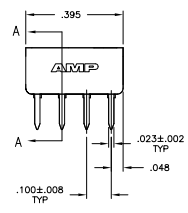
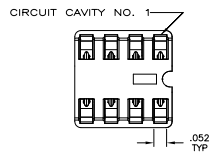


REV	DATE	DESCRIPTION	BY	CHK	APP
AD	0				
A1		REVISED PER EDD-11-004820	11MR11	RK	HMR

- RECEPTACLE ACCEPTS A .008-.014 THICK I.C. LEAD.
- TUBE LOADED FOR AUTOMATIC INSERTION.
- TWO .000030 MIN THK. GOLD STRIPES IN CONTACT AREA WITH TIN-LEAD (93/7) ON CONTACT LEGS. BALANCE OF CONTACT NICKEL PLATED.
- TWO .000015 MIN THK. GOLD STRIPES IN CONTACT AREA WITH TIN-LEAD (93/7) ON CONTACT LEGS. BALANCE OF CONTACT NICKEL PLATED.



PROPERTY	VALUE	UNIT	DESCRIPTION	REMARKS
OBSOLETE	TINNED	PHOS.BRZ. .008 THK	GLASS-FILLED THERMOPLASTIC, 94V-O, BLACK	2-640463-5
			GLASS-FILLED THERMOPLASTIC, 94V-O, BLACK	2-640463-4
SUPERSEDED BY 390261-2	TINNED	PHOS.BRZ. .008 THK	GLASS-FILLED THERMOPLASTIC, 94V-O, BLACK	2-640463-3
			GLASS-FILLED THERMOPLASTIC, 94V-O, BLACK	2-640463-2
SUPERSEDED BY 390261-2	TINNED	BE.CU. .008 THK	GLASS-FILLED THERMOPLASTIC, 94V-O, BLACK	2-640463-1
			GLASS-FILLED THERMOPLASTIC, 94V-O, BLACK	2-640463-1
CONTACT FINISH	CONTACT MAT'L	HOUSING MATERIAL	PART NO.	
THIS DRAWING IS A CONTROLLED DOCUMENT.		REV. CONTROL	DATE	
DRAWING		DATE	DATE	
DESIGNED		DATE	DATE	
CHECKED		DATE	DATE	
APPROVED		DATE	DATE	
DRAWN		DATE	DATE	
SCALE		DATE	DATE	
CUSTOMER DRAWING		DATE	DATE	