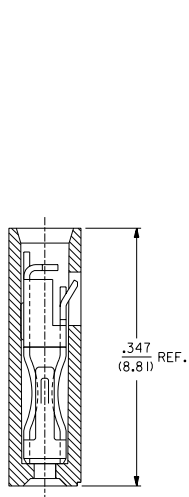
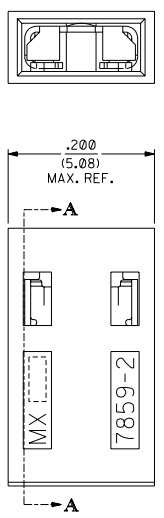


EDP NO.	ENG NO.	FINISH
15-38-1026	A-7859-2A164	TIN OVERALL
15-29-1025	A-7859-2A554	15 GOLD
15-29-1027	A-7859-2A561	30 GOLD

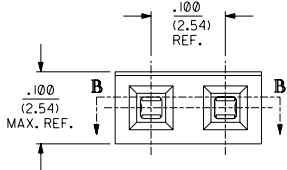
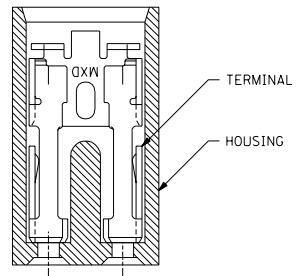
PART IDENTIFICATION:
 A-7859-2A***
 └── PLATING SPECIFICATION
 └── PIN STOP VERSION



SECTION A-A



SECTION B-B



NOTES:

- MATERIAL:
 HOUSING: GLASS FILLED POLYESTER; 94V-0; COLOR: BLACK
 TERMINAL: PHOSPHOR BRONZE ALLOY.
- THIS PRODUCT CONFORMS TO MOLEX PRODUCT SPEC. PS-7859.
- TO BE USED WITH .025/(0.64) SQUARE PINS.
- MINIMUM MATING PIN LENGTH: .200/(5.08)
 MAXIMUM MATING PIN LENGTH: .270/(6.86)
- PRODUCT IS PACKAGED IN BOXES PER PK-70873-0815.

FINISH SPECIFICATION

- TIN OVERALL - .000150 MINIMUM TIN PLATE OVER
 .000050 MINIMUM NICKEL UNDERPLATE.
- 15 GOLD - .000015 MINIMUM GOLD PLATE IN SELECT AREA OVER
 .000050 MINIMUM NICKEL UNDERPLATE OVERALL.
- 30 GOLD - .000030 MINIMUM GOLD PLATE IN SELECT AREA OVER
 .000050 MINIMUM NICKEL UNDERPLATE OVERALL.

NOTE FOR LEAD FREE CONVERSION:
 THE PRIMARY SHIPPING CARTON WILL BE LABELED *COMPLIANT TO ROHS DIRECTIVE 2002/95/EC AND ELV ANNEX II OF DIRECTIVE 2000/53/EC*. CARTONS WITHOUT THIS LABEL MAY CONTAIN PRODUCT WITH LEAD.

D	LEAD FREE CONV. ECU LCP2004-2133 RRADAMS 04/04/27
C1	ADDED PKG SPEC. PER ECU U70786 WHETSTON 97/2/7
C	CHANGED MATERIAL PER ECR #U5214 95/06/02 CAC
B	REVISED ENG. NOS. PER ECR # U31591 10/26/93 REED
A	RELEASED PER ECR # U30372 03/11/93 REED
3	REVISE GOLD PLTG. PER ECR # U12055 10/18/91 AAB
2	REVISE TERM. PLTG. PER ECR # U10096 06/18/91 AAB
1	*X* RELEASE PER ECR # U10445 02/07/91 AAB

DIMENSIONS SHOWN (METRIC) INCH		MFG. SH. REV. LTR. REVISIONS									
UNLESS OTHERWISE SPECIFIED TOLERANCES ANGULAR ± 0.2°		REVISIONS ONLY ON CAD SYSTEM									
<table border="1"> <thead> <tr> <th>INCH</th> <th>METRIC</th> </tr> </thead> <tbody> <tr> <td>± .0005</td> <td>---</td> </tr> <tr> <td>± .01</td> <td>± 0.13</td> </tr> <tr> <td>± .025</td> <td>± 0.25</td> </tr> </tbody> </table>		INCH	METRIC	± .0005	---	± .01	± 0.13	± .025	± 0.25	TITLE: SALES ASSY - SHUNT 2-CIRCUIT TERMINAL W/PIN STOP MOLEX INCORPORATED SHEET NO. 1 OF 1 DATE 02/07/91 FILE NAME: S7859X1A NO. DRAWING CONTAINS INFORMATION THAT IS PROPRIETARY TO MOLEX INC. AND SHOULD NOT BE USED WITHOUT WRITTEN PERMISSION.	
INCH	METRIC										
± .0005	---										
± .01	± 0.13										
± .025	± 0.25										
ORG: AAB BY: MJM APP'D: MJM	DWG. NO. 68532 SCALE 10: 1 SIZE	SEE CHART SDA-7859-2A***N									