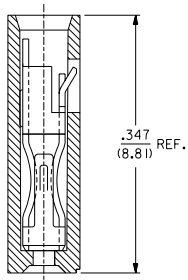
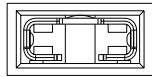


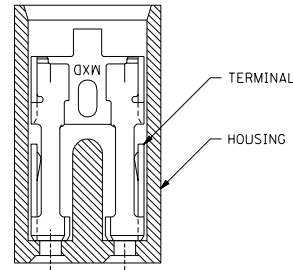
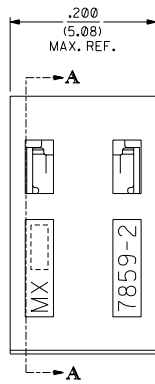
EDP NO.	ENG NO.	FINISH
15-38-1024	A-7859-2164	TIN OVERALL
15-29-1024	A-7859-2554	15 GOLD
15-29-1026	A-7859-2561	30 GOLD

**PART IDENTIFICATION:**

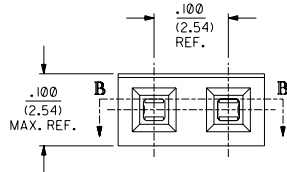
A-7859-2\*\*\*  
 └ PLATING SPECIFICATION



**SECTION A-A**



**SECTION B-B**



**NOTES:**

1. THIS PRODUCT CONFORMS TO MOLEX PRODUCT SPEC. PS-7859.
2. TO BE USED WITH .025/(0,64) SQUARE PINS.
3. MINIMUM MATING PIN LENGTH: .200/(5,08)
4. PRODUCT IS PACKAGED IN BOXES PER PK-70873-0815

**FINISH SPECIFICATION**

- TIN OVERALL - .000150 MINIMUM TIN PLATE OVER  
 .000050 MINIMUM NICKEL UNDERPLATE.
- 15 GOLD - .000015 MINIMUM GOLD PLATE IN SELECT AREA OVER  
 .000050 MINIMUM NICKEL UNDERPLATE OVERALL.
- 30 GOLD - .000030 MINIMUM GOLD PLATE IN SELECT AREA OVER  
 .000050 MINIMUM NICKEL UNDERPLATE OVERALL.

**MATERIAL:**

HOUSING: GLASS FILLED POLYESTER; 94V-0; COLOR: BLACK.  
 TERMINAL: PHOSPHOR BRONZE ALLOY

**NOTE FOR LEAD FREE CONVERSION:**

THE PRIMARY SHIPPING CARTON WILL BE LABELED "COMPLIANT" TO RoHS DIRECTIVE 2002/95/EC AND ELV ANNEX II OF DIRECTIVE 2000/53/EC. CARTONS WITHOUT THIS LABEL MAY CONTAIN PRODUCT WITH LEAD.

7859

REV.	DESCRIPTION
D	LEAD FREE CONV. ECU LCP2004-2153. ROADMAP: 03/09/27
C1	ADDED PKG. SPEC. PER ECU U70786. WHEATSTON 97/277
C	CHANGED MATERIAL PER ECR #151214 95/06/02 CAC
B	REVISED ENG. NOS. PER ECR # U31591 10/26/93 REED
A	RELEASED PER ECR # U30372 03/11/93 REED
3	REVISE GOLD PLT.G. PER ECR # U12955 10/18/91 AAB
2	REVISE TERM. PLT.G. PER ECR # U11096 06/18/91 AAB
1	"X" RELEASE PER ECR # U10445 02/07/91 AAB

DIMENSIONS SHOWN (METRIC) INCH		REVISIONS									
UNLESS OTHERWISE SPECIFIED TOLERANCES ANGULAR ± 0.2°		MFG. SH. REV. LTR.									
<table border="1"> <thead> <tr> <th>INCH</th> <th>METRIC</th> </tr> </thead> <tbody> <tr> <td>3 PLACE ± .0005</td> <td>---</td> </tr> <tr> <td>2 PLACE ± .01</td> <td>± 0.13</td> </tr> <tr> <td>1 PLACE ---</td> <td>± 0.25</td> </tr> </tbody> </table>		INCH	METRIC	3 PLACE ± .0005	---	2 PLACE ± .01	± 0.13	1 PLACE ---	± 0.25	REVISIONS ONLY ON CAD SYSTEM TITLE: SALES ASSY - SHUNT 2-CIRCUIT TERMINAL W/OPEN END MOLEX INCORPORATED PART NO. SDA-7859-2***N SHEET NO. 1 OF 1 DATE 10/07/91 FILE NAME 57859X1 NO. DRAWING CONTAINS INFORMATION THAT IS PROPRIETARY TO MOLEX INC. AND SHOULD NOT BE USED WITHOUT WRITTEN PERMISSION.	
INCH	METRIC										
3 PLACE ± .0005	---										
2 PLACE ± .01	± 0.13										
1 PLACE ---	± 0.25										
ORG. BY: AAB APP'D: MJM	CHG. BY: [ ] SCALE: 10:1	SEE CHART DRWG. NO. SDA-7859-2***N									