

# Customer Information Sheet

DRAWING No.: M22-19X00XX

SHEET 1 OF 2

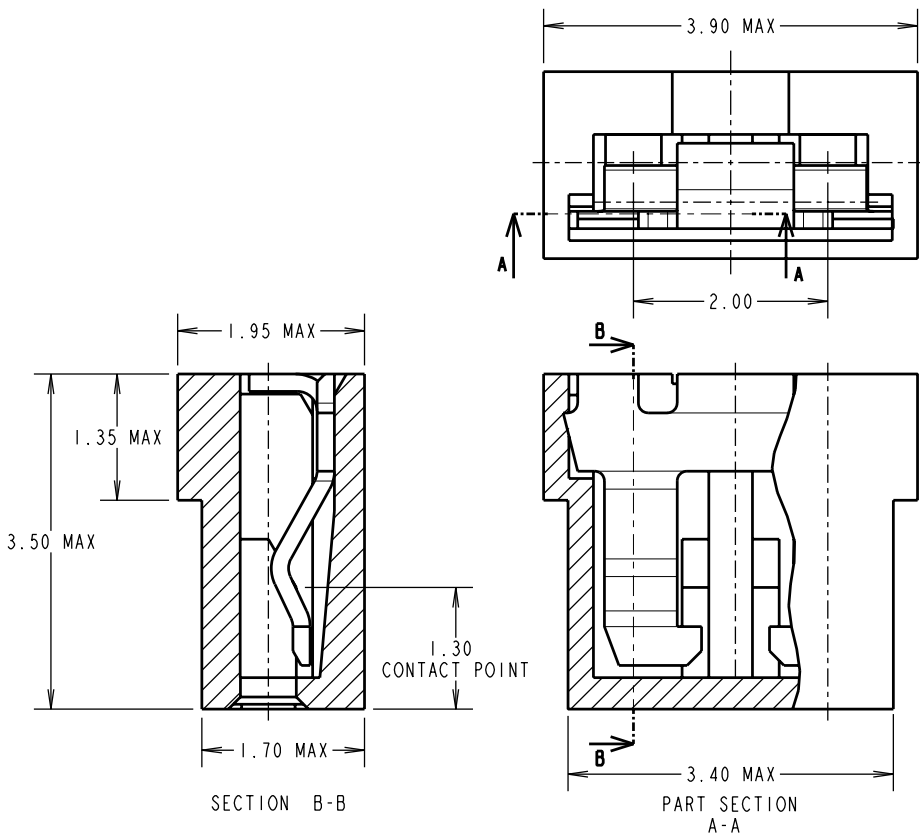
IF IN DOUBT - ASK

(C)

NOT TO SCALE

THIRD ANGLE PROJECTION

ALL DIMENSIONS IN mm



**SPECIFICATIONS:**  
**MATERIALS:**  
 MOULDING = GLASS FILLED POLYESTER UL94V-0  
 CONTACT = BERYLLIUM COPPER  
**FINISH:**  
 CONTACT:  
 05 = 0.13µ GOLD ON CONTACT FACE OVER NICKEL  
 46 = 3µ 100% TIN OVER NICKEL  
 MOULDING COLOUR = SEE ORDER CODE  
**ELECTRICAL:**  
 CURRENT RATING AT 25°C = 2A MAX  
 WORKING VOLTAGE = 250V AC/DC  
 VOLTAGE PROOF = 500V AC/DC @ 50Hz  
 CONTACT RESISTANCE (MAXIMUM):  
 TIN/LEAD = 20 MILLIOHMS INITIAL  
 25 MILLIOHMS AFTER CONDITIONING  
 GOLD = 15 MILLIOHMS INITIAL  
 20 MILLIOHMS AFTER CONDITIONING  
**INSULATION RESISTANCE (MINIMUM):**  
 INITIAL = 1000 MEGOHMS  
 AFTER CONDITIONING = 1000 MEGAOHMS  
**ENVIRONMENTAL:**  
 TEMPERATURE RANGE = -40°C TO +85°C  
**MECHANICAL:**  
**DURABILITY:**  
 TIN/LEAD = 50 OPERATIONS  
 GOLD = 300 OPERATIONS  
 INSERTION FORCE = 10N MAX  
 WITHDRAWAL FORCE = 1N MIN  
 FOR COMPLETE SPECIFICATION, SEE COMPONENT SPECIFICATION C013XX (LATEST ISSUE)

**ORDER CODE:**  
**M22-19X00XX**  
 MOULDING COLOUR  
 0 = BLACK  
 1 = BLUE  
 2 = RED  
 3 = LIGHT GREY  
 CONTACT FINISH  
 05 = GOLD  
 46 = 100% TIN

RA	5	08.10.08	10154
NAME	ISS.	DATE	C/NOTE
APPROVED:		R. ADDE	
CHECKED:		M.G. PLESTED	
DRAWN:		W.J. BOURNE	
CUSTOMER REF.:			
ASSEMBLY DRG:			

**HARWIN**

HARWIN USA  
 TEL: 603 893 5376  
 FAX: 603 893 5396  
 mis@harwin.com

HARWIN Europe (UK)  
 TEL: 023 9231 4545  
 FAX: 023 9231 4590  
 mis@harwin.co.uk

HARWIN Asia  
 TEL: +65 6 779 4909  
 FAX: +65 6 779 3868  
 mis@harwin.com.sg

THIS DRAWING AND ANY INFORMATION OR DESCRIPTIVE MATTER SET OUT HEREON ARE CONFIDENTIAL AND COPYRIGHT PROPERTY OF THE HARWIN GROUP AND MUST NOT BE DISCLOSED, LOANED, COPIED OR USED FOR MANUFACTURING, TENDERING OR FOR ANY OTHER PURPOSE WITHOUT THEIR WRITTEN PERMISSION.

**TOLERANCES**  
 X. = ±1mm  
 X.X = ±0.25mm  
 X.XX = ±0.10mm  
 X.XXX = ±0.01mm  
 ANGLES = ±5°  
 UNLESS STATED

**MATERIAL:**  
**FINISH:**  
**S/AREA:** mm<sup>2</sup>

**TITLE:**  
 2mm PITCH JUMPER SOCKET ASSEMBLY (OPEN TOP)

**DRAWING NUMBER:**  
**M22-19X00XX**

SHT  
 1 OF 2