

Customer Information Sheet

DRAWING No.: S1621-XX

SHEET 2 OF 2

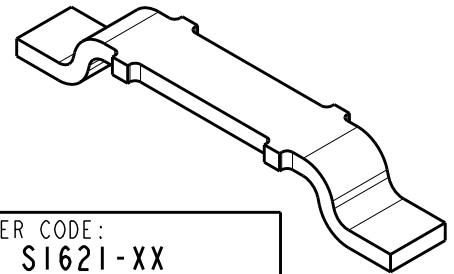
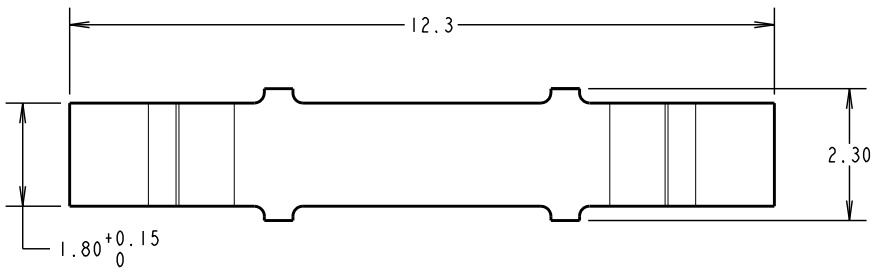
IF IN DOUBT - ASK

©

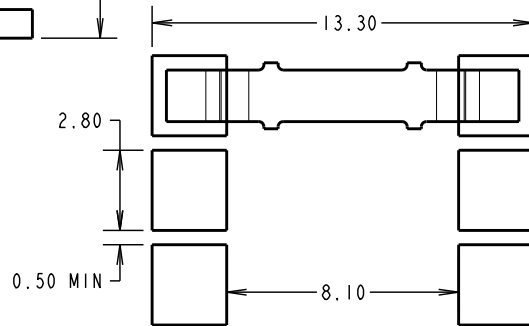
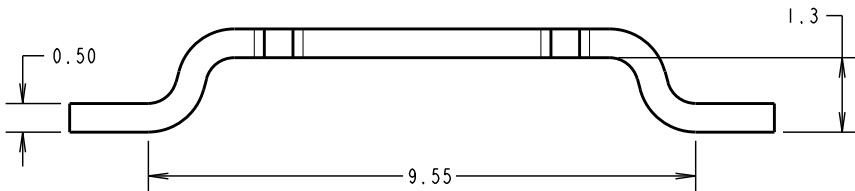
NOT TO SCALE

THIRD ANGLE PROJECTION

ALL DIMENSIONS IN mm



ORDER CODE:
S1621-XX
FINISH:
06 = 4µ 90/10 TIN/LEAD OVER NICKEL
46 = 3µ 100% TIN OVER NICKEL



SM	7	29.07.10	10888
NAME	ISS.	DATE	C/NOTE
APPROVED: S. MCCULLAGH			
CHECKED: R. ADDE			
DRAWN: W. J. BOURNE			
CUSTOMER REF.:			
ASSEMBLY DRG:			

- FOR REELED COMPONENT, SEE DRAWING S162-XX.
FOR TAPE AND REELED COMPONENT, SEE DRAWING S1621-XXR.
- PACKING: - 1000 COMPONENTS PER BAG
- CURRENT RATING = 10A MIN (30°C MAX TEMP RISE)

RECOMMENDED
PAD LAYOUT

HARWIN

HARWIN USA
TEL: 603 893 5376
FAX: 603 893 5396
mis@harwin.com

HARWIN Europe (UK)
TEL: 023 9231 4545
FAX: 023 9231 4590
mis@harwin.co.uk

HARWIN Asia
TEL: +65 6 779 4909
FAX: +65 6 779 3868
mis@harwin.com.sg

THIS DRAWING AND ANY INFORMATION OR DESCRIPTIVE MATTER SET OUT HEREON ARE CONFIDENTIAL AND COPYRIGHT PROPERTY OF THE HARWIN GROUP AND MUST NOT BE DISCLOSED, LOANED, COPIED OR USED FOR MANUFACTURING, TENDERING OR FOR ANY OTHER PURPOSE WITHOUT THEIR WRITTEN PERMISSION.

TOLERANCES
X. = ±1mm
X.X = ±0.25mm
X.XX = ±0.10mm
X.XXX = ±0.01mm
ANGLES = ±5°
UNLESS STATED

MATERIAL:

BRASS CW508L

FINISH: SEE ORDER CODE

S/AREA: mm²

TITLE:

SURFACE MOUNT JUMPER
(LOOSE)

DRAWING NUMBER:

S1621-XX

SHT
2
OF 2