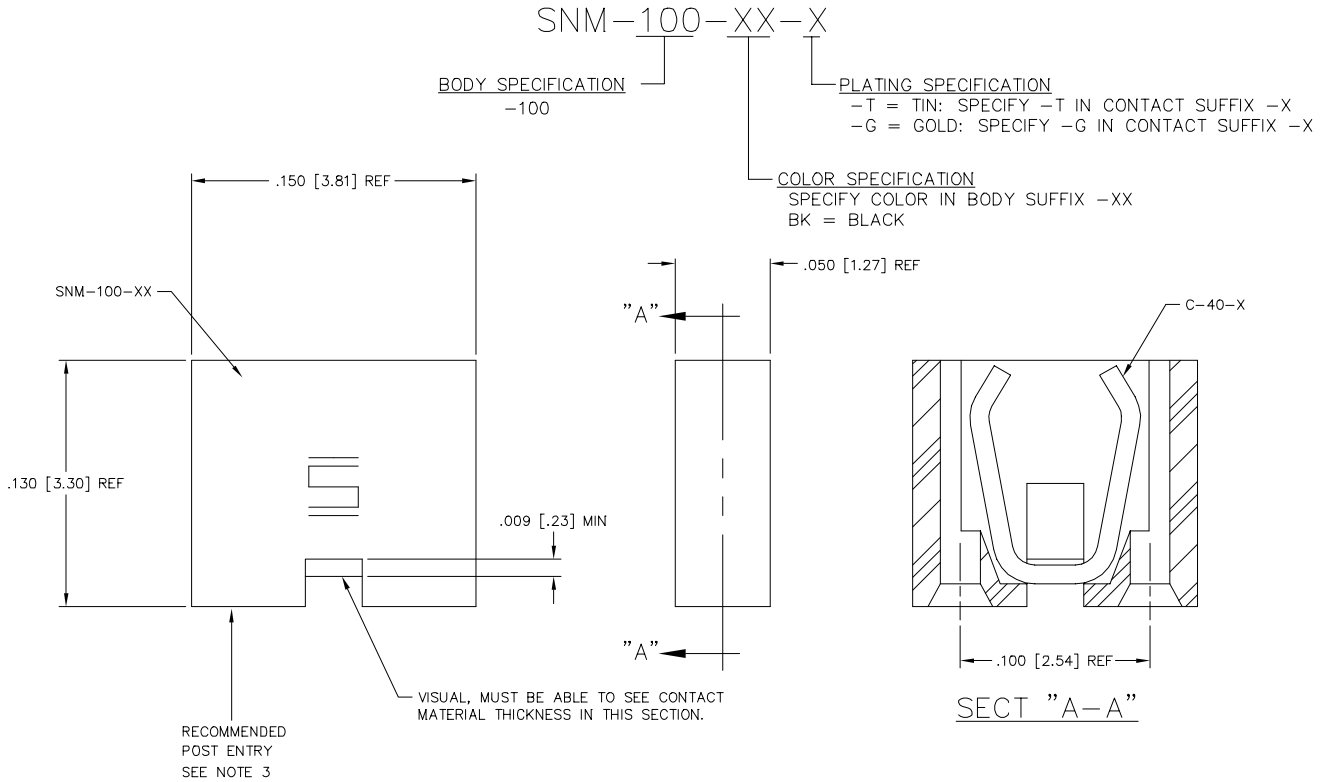


REV. D

DIMENSIONS ARE IN INCHES		UNLESS OTHERWISE NOTED TOLERANCES ARE:		TITLE: .050 [1.27] X .100 [2.54] @ SHUNT ASSEMBLY	DWG NO: SNM-100-XX-X
ONE PLACE DECIMALS ± .1 [2.54]	THREE PLACE DECIMALS ± .005 [0.13]	ANGLES ± 1°	FOUR PLACE DECIMALS ± .0020 [0.051]	SHEET 1 OF 1	



Do not scale from this print

- NOTES:
1. INSERTION FORCE USING (2) .018 SQ. PINS = 7 oz. AVG.
 2. WITHDRAWAL FORCE USING (2) .018 SQ. PINS = 3 oz. AVG.
 3. MINIMUM POST HEIGHT .135" [3.43] FOR PROPER MATE

PROPRIETARY NOTE
THIS DOCUMENT CONTAINS INFORMATION CONFIDENTIAL AND PROPRIETARY TO SAMTEC INC. AND SHALL NOT BE REPRODUCED OR TRANSMITTED TO OTHER DOCUMENTS OR DISCLOSED TO OTHER THAN THAT FOR WHICH IT WAS OBTAINED WITHOUT THE EXPRESSED WRITTEN CONSENT OF SAMTEC INC.

MATERIAL: BODY: VALOX DR-48 COLOR: SPECIFIED IN PART NO.	<p>520 PARK EAST BLVD. NEW ALBANY, INDIANA 47150 PHONE (812) 944-6733 P.O. BOX 1147 CODE 55322</p>	MADE BY: KOLB 7-20-89	ENG. APPROVAL	SNM-100-XX-X SHEET 1 OF 1
TERMINAL: PHOSPHOR BRONZE, CA510 EXTRA HARD TEMPER				

PLOT SCALE: 1=.04

MISC\MKTG
SNM-ASM