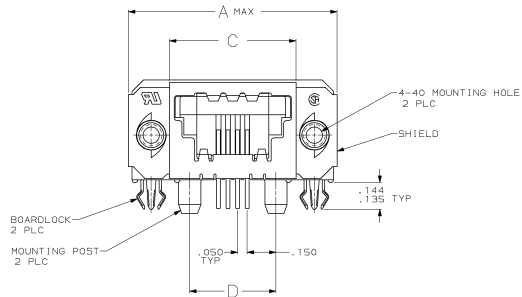
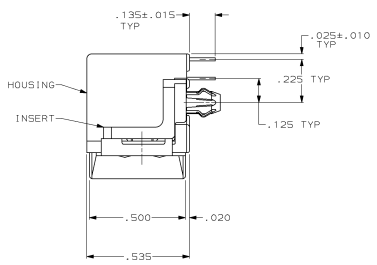
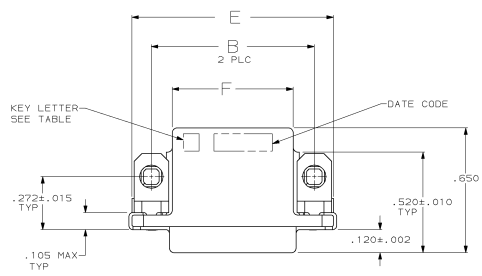


DRAWING MADE IN THIRD ANGLE PROJECTION  
 THIS DRAWING IS UNPUBLISHED. RELEASED FOR PUBLICATION  
 © Copyright 1984 BY AMP INCORPORATED. ALL INTERNATIONAL RIGHTS RESERVED.

REV	BY	DATE	DESCRIPTION	DATE	APPD
D			RELEASED MS 88-102-7,8,28,10, NR222	1-27-88	JP
A			REVISED ECN 803272	8-18-89	JP
B			REVISED ECN 803371	12-7-89	JP
C			OBS 2-2, 2-3, 2-6, 3-1, 3-3, 3-6, 4-3, 4-6, 6-1 PER ECN 806168	06/01/90	JP
D			OBS -42, -53, -56 PER EC 0020-1517-93	05/05/94	SM
E			OBS 1-1 PER EC 0020-1575-93	04/07/94	SM
F			REACTIVATED 1-1 & 3-1 EC 0020-388-94	04/10/94	SM
G			REACTIVATED 5-3 PER ECN 0020-353-94	07/05/94	SFM
H			REV PER EC 0020-1350-94	07/06/94	SM
J			REV PER EC 0020-271-95	04/17/95	RB
K			OBS -22, -26, -51 PER EC 0020-472-95	24 SEP 95	RB
L			OBSOLETE -32 AND -52 PER EC 0410-186-96	26 JAN 96	JDS
M			REACTIVATED 5-6 PER EC 0410-13-98	18 FEB 98	JS



- ▲ POLYESTER, FLAME RETARDANT, UL 94V-0 RATED, GLASS FILLED, BLACK.
- ▲ SHIELD; BRASS; INSERT; ZINC ALLOY; BOARDLOCKS; COPPER ALLOY.
- ▲ PHOSFOR BRONZE PER QQ-B-750.
- ▲ .000030 MIN BRIGHT TIN-LEAD OVER .000050 MIN NICKEL.
- ▲ .000150 MIN BRIGHT TIN-LEAD ON SOLDER END, .000050 MIN GOLD ON MATING END FOR A LENGTH OF .100 MIN ON MATING SURFACE, ALL OVER .000050 MIN NICKEL ON ENTIRE CONTACT.
- ▲ GOLD PLATING PER MIL-G-45204, NICKEL PLATING PER QQ-N-250, TIN PLATING PER MIL-T-10727.
- ▲ .000150 MIN NICKEL OVER .000100 MIN COPPER.
- ▲ .000200 MIN TIN-LEAD OVER .000050 MIN NICKEL.

REV	BY	DATE	DESCRIPTION	DATE	APPD				
OBSOLETE	.630	1.050	.450	.660	.850	1.100	4	F	6-943036-1
	1.230	1.650	1.050	1.260	1.450	1.700	16	E	5-943036-8E
	.830	1.250	.650	.860	1.050	1.300	8	E	5-943036-3
OBSOLETE	.730	1.150	.550	.760	.950	1.200	6	E	5-943036-2
	.630	1.050	.450	.660	.850	1.100	4	E	5-943036-1
OBSOLETE	1.230	1.650	1.050	1.260	1.450	1.700	16	D	4-943036-8E
OBSOLETE	.830	1.250	.650	.860	1.050	1.300	8	D	4-943036-3
OBSOLETE	.730	1.150	.550	.760	.950	1.200	6	D	4-943036-2
	.630	1.050	.450	.660	.850	1.100	4	D	4-943036-1
OBSOLETE	1.230	1.650	1.050	1.260	1.450	1.700	16	C	3-943036-8E
OBSOLETE	.830	1.250	.650	.860	1.050	1.300	8	C	3-943036-3
OBSOLETE	.730	1.150	.550	.760	.950	1.200	6	C	3-943036-2
	.630	1.050	.450	.660	.850	1.100	4	C	3-943036-1
OBSOLETE	1.230	1.650	1.050	1.260	1.450	1.700	16	B	2-943036-8E
OBSOLETE	.830	1.250	.650	.860	1.050	1.300	8	B	2-943036-3
OBSOLETE	.730	1.150	.550	.760	.950	1.200	6	B	2-943036-2
	.630	1.050	.450	.660	.850	1.100	4	B	2-943036-1
	1.230	1.650	1.050	1.260	1.450	1.700	16	A	1-943036-8E
	.830	1.250	.650	.860	1.050	1.300	8	A	1-943036-3
	.730	1.150	.550	.760	.950	1.200	6	A	1-943036-2
	.630	1.050	.450	.660	.850	1.100	4	A	1-943036-1

DO NOT SCALE PRINT, UNLESS SPECIFIED. DIMENSIONS IN INCHES (PARENCES) ON 1/8 DEC .005 INCHES	DR 1-22-88 CHK 2-8-89 APPD 2-8-89 J. BRITTSKY	AMP INCORPORATED Morton, IL 61706
MATERIAL: HOUSING: ▲ INSERT; ▲ SHIELD & BOARDLOCK; ▲ CONTACT; ▲	APPD 2-8-89 S. BARRIS PRODUCT SPEC 118-2047	RECEPTACLE ASSEMBLY, SIDE ENTRY, SOL
FINISH: ▲ BOARDLOCK; ▲ SHIELD; ▲ INSERT; ▲ CONTACT; ▲	APPLICATION SPEC 114-2081 WEIGHT	SIZE D FIGR NO 00779 DRAWING NO 943036 SCALE 4:1 SHEET 1 OF 1