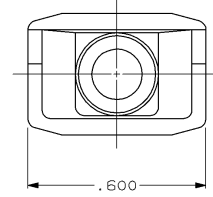
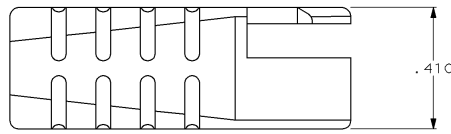
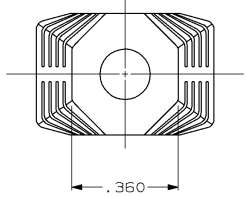
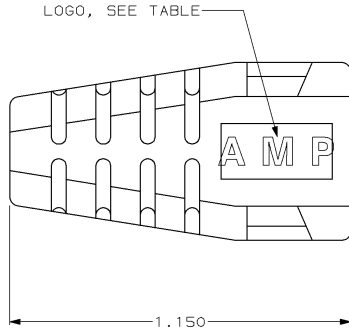


DRAWING MADE IN THIRD ANGLE PROJECTION
 THIS DRAWING IS UNPUBLISHED. RELEASED FOR PUBLICATION
 © COPYRIGHT 19 BY AMP INCORPORATED. ALL INTERNATIONAL RIGHTS RESERVED.

LOC	DIST	P	F	ZONE	LTR	REVISIONS	DATE	APPD
BD	50					E REDRAWN	10/8/90	-
						F RLSE 520852-5 & -6 NPR4397	10/06/93	JP
						WAS 92-1014-3-1 & -2		
						G OBS -2 & -6 PER EC 0020-1575-93	04/27/94	SM
						H REV PER EC 0020-0017-95	01/20/95	RB
						J REV PER EC 0020-475-95	24 OCT 95	RB
						K REV PER EC 0410-251-97	22 SEP 97	JDS



1. BOOT ACCEPTS CABLE .168-.225 DIA.
2. SEE APPLICATION SPECIFICATIONS 114-2090 OR 114-2102 FOR ASSOCIATED PLUG AND CABLE SPECIFICATIONS.
3. SLIDE BOOT OVER UNTERMINATED CABLE, COMPLETE TERMINATION PER ABOVE SPECIFICATIONS, AND SLIDE BOOT OVER COMPLETED PLUG ASSEMBLY.

OBSOLETE	NO	GRAY	520852-6
OBSOLETE	YES	GRAY	520852-2
	YES	BLACK	520852-1
	LOGO	COLOR	PART NUMBER

DO NOT SCALE PRINT. UNLESS SPECIFIED DIMENSIONS IN INCHES TOLERANCES ON + 2 PLC DEC # - 3 PLC DEC # .010 ANGLES ± -	DR 10/8/90 A. STAUB BG CHK 3-1-91 R. STONE APPD 3-5-91 J. PRITULSKY	AMP Incorporated Harrisburg, PA 17105-3608
MATERIAL THERMOPLASTIC RUBBER	NAME 6 POSITION SDL ROUND PLUG BOOT	
FINISH -	APPLICATION SPEC -	SIZE C 00779
WEIGHT -		DRAWING NO 520852
	SCALE 4:1	SHEET 1 OF 1

520852