

4

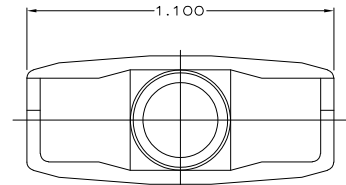
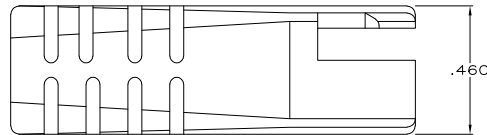
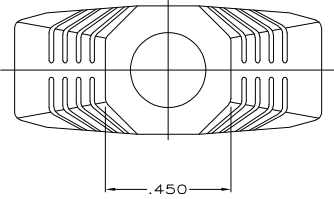
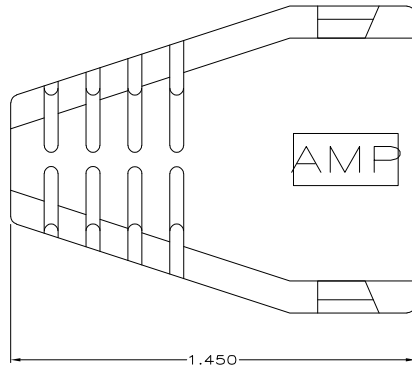
3

2

1

THIS DRAWING IS UNPUBLISHED. RELEASED FOR PUBLICATION
 © COPYRIGHT BY TYCO ELECTRONICS CORPORATION. ALL RIGHTS RESERVED.

LOC	DIST	REVISIONS					
GP	00	P	LTR	DESCRIPTION	DATE	MIN	APD
		G		REV PER EC 0513-0331-05	18AUG06		CR



1. BOOT ACCEPTS CABLE .229--.308 DIA.
2. SEE APPLICATION SPECIFICATIONS 114-2090 OR 114-2102 FOR ASSOCIATED PLUG AND CABLE SPECIFICATIONS.
3. SLIDE BOOT OVER UNTERMINATED CABLE, COMPLETE TERMINATION PER ABOVE SPECIFICATIONS, AND SLIDE BOOT OVER COMPLETED PLUG ASSEMBLY.

OBSOLETE	GRAY	520854-4
OBSOLETE	BLACK	520854-3
OBSOLETE	GRAY	520854-2
	BLACK	520854-1
	COLOR	PART NUMBER

THIS DRAWING IS A CONTROLLED DOCUMENT.		DATE	TYCO Electronics Corporation	
A. STAUB BG		10/9/90	Harrisburg, PA 17105-3608	
OK			16 POSITION SDL ROUND PLUG BOOT	
APVD			RESTRICTED TO	
PRODUCT SPEC			-	
APPLICATION SPEC			-	
MATERIAL			-	
FINISH			-	
THERMOPLASTIC			-	
CUSTOMER DRAWING			-	
SCALE		4:1	SHEET 1 of 1 REV G	

AMP 1471-9 REV 31MM2000

520854

A