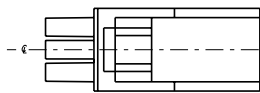
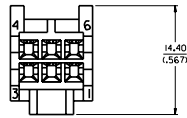
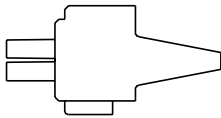
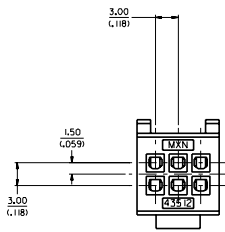
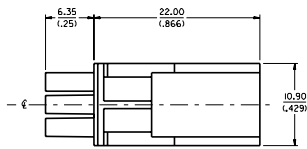


43512

NOTES:

1. MATERIAL: POLYESTER (PBT), UN-FILLED, UL 94V-0. COLOR: BLACK
2. FINISH: NONE
3. PRODUCT SPEC.: PS-43510-002
4. ALL DIMENSIONS SHOWN FOR REFERENCE ONLY.
5. USES STANDARD 43030 MICRO-FIT FEMALE CRIMP TERMINALS.
7. PART MATES WITH 43515-0001 PLUG POD.
8. PART TO BE USED WITH 43838-0*** RECEPTACLE SHROUD. (SEE SHROUD DRAWING FOR ASSEMBLY INFORMATION)



MOVED LETTERING EC: M.LUCR 09/9-05/94 DRWING: GART 99/03/71 APPR: COMERC 99/03/20 APPR: COMERC 99/03/20	QUALITY SYMBOLS	GENERAL TOLERANCES: UNLESS SPECIFIED	SCALE: 4:1	DESIGN UNITS: mm	THIRD ANGLE PROJECTION	DIMENSIONS: mm	SHT	REV	
	MAJOR	mm	INCH	DRAWN BY & DATE: COMERC 97/10/06	TITLE: MICRO-FIT RECEPTACLE 6 CIRCUIT, DUAL ROW	INCH			
	CRITICAL	4 PLACES ±0.---	2.---	CHECKED BY & DATE: COMERC 97/10/06	COMPODRE SYSTEM	mm			
		3 PLACES ±0.---	2.---	APPROVED BY & DATE: FRY 97/10/10	MOLEX INCORPORATED	mm			
		1 PLACE ±0.---	2.---	CAD FILENAME: S4351201.DGN	MATERIAL NO.: 43512-0001	DRAWING NO.: SD-43512-001	SHEET NO.: 1 OF 1	SIZE: D	
		ANGULAR: ± 0		THIS DRAWING CONTAINS INFORMATION THAT IS PROPRIETARY TO MOLEX INCORPORATED AND SHOULD NOT BE USED WITHOUT WRITTEN PERMISSION.					