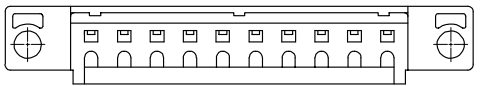
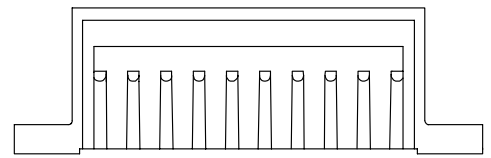
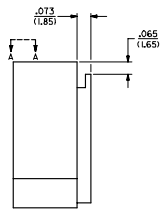
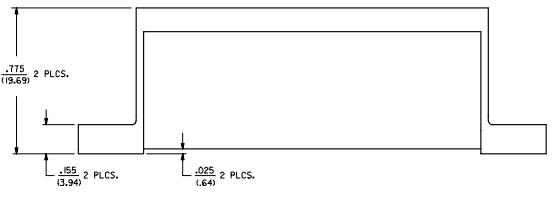
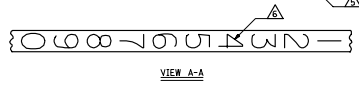
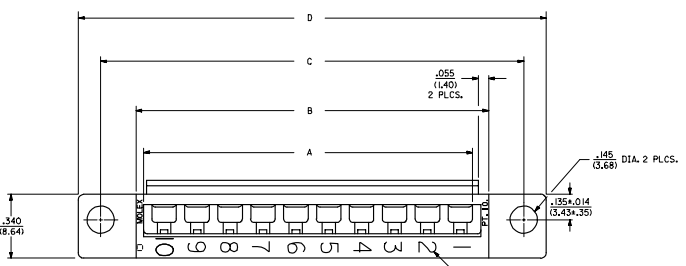


20 19 18 17 16 15 14 13 12 11 10 9 8 7 6 5 4 3 2 1

- NOTES:**
- ▲ THESE HOUSINGS ARE FOR USE WITH THE 145T-+ TERMINALS AND MAY BE SUBDIVIDED BY USING THE 1461-K KEY.
 - ▲ THE HOUSINGS ARE ONLY AVAILABLE IN 5, 10, 15, AND 20 CIRCUIT SIZES.
 - ▲ PRODUCT SPECIFICATION PS 50-36 APPLIES.
 - ▲ THESE HOUSINGS CONFORM TO U.L. AND C.S.A. REQUIREMENTS.
 - ▲ .060/(1.52) HIGH RAISED NUMERALS.
 - ▲ .125/(3.18) HIGH RECESSED NUMERALS ON A MATTE BACKGROUND.
 - ▲ .09/(2.3) HIGH INK STAMPED NUMERALS.
 - 8. PACKAGE PER PK-1461-100.



4	01
3	0
2	01
1	0

MODIFY CORE OUTS EC NS. LCP2005-2756 CHROSBORNER 2005/10/01 APPROVED FOR RELEASE	QUALITY SYMBOLS	GENERAL TOLERANCES (UNLESS SPECIFIED)	DRWNSN STYLE	SCALE	DESIGN UNITS	THIRD ANGLE PROJECTION
	▽=0	mm INCH	IN/MM	4:1	INCH	⊙
	4 PLACES ±---	±---	DRAWN BY	DATE	TITLE	
	3 PLACES ±---	±.010	AFG	9/1/02/18	HOUSING, COMMONING	
2 PLACES ±0.25	±.012	CHEKED BY	DATE	[.025/(.64) OFFSET]		
1 PLACE ±0.35	±---	RHR	9/1/02/18			
	ANGULAR ±1/2°	APPROVED BY	DATE	MATERIAL NO.	DOCUMENT NO.	SHEET NO.
		DWF	9/1/02/18	MOLEX INCORPORATED	SD-1461-*	1 OF 4
DRAFT WHERE APPLICABLE MUST REMAIN WITHIN DIMENSIONS		SEE TABLE	THIS DRAWING CONTAINS INFORMATION THAT IS PROPRIETARY TO MOLEX INCORPORATED AND SHOULD NOT BE USED WITHOUT WRITTEN PERMISSION			

Rev. 0 from D. J. NE. P. Rev. 1 1/2004/05/02

PART NO.	ENG. NO.	NO. CKTS.	DIM. A	DIM. B	DIM. C	DIM. D
07-01-7201	1461-20	20	3.50 (88.9)	3.63 (92.2)	4.00 (101.6)	4.24 (107.7)
07-01-7151	1461-15	15	2.62 (66.5)	2.75 (69.9)	3.13 (79.5)	3.37 (85.6)
07-01-7101	1461-10	10	1.750 (44.45)	1.875 (47.63)	2.250 (57.15)	2.49 (63.2)
07-01-7051	1461-5	5	.875 (22.23)	1.000 (25.40)	1.375 (34.93)	1.615 (41.02)

SPECIAL NUMBERED HOUSINGS CHART						
PART NO.	ENG. NO.	NO. CKTS.	CIRCUIT NUMERALS			
07-01-7102	1461-10-1	10	11 THRU 20			
07-01-7103	1461-10-2	10	21 THRU 30			
07-01-7104	1461-10-3	10	31 THRU 40			
07-01-7152	1461-15-1	15	16 THRU 30			
07-01-7153	1461-15-2	15	31 THRU 45			
07-01-7154	1461-15-3	15	46 THRU 60			
07-01-7202	1461-20-1	20	21 THRU 40			
07-01-7203	1461-20-2	20	41 THRU 60			
07-01-7204	1461-20-3	20	61 THRU 80			

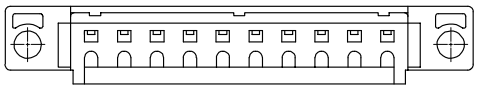
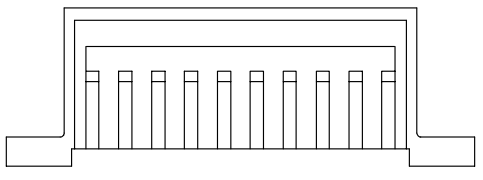
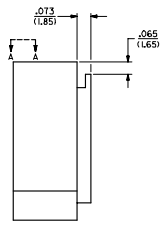
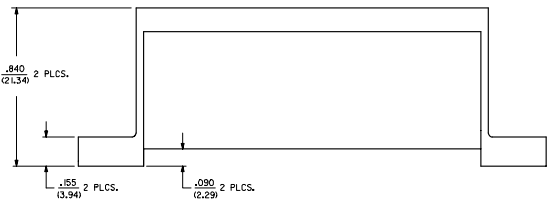
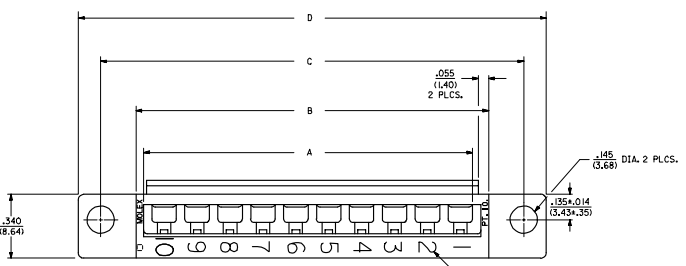
INK STAMPED HOUSINGS								
BEFORE INK STAMP	AFTER INK STAMP	BEFORE INK STAMP	AFTER INK STAMP	NO. CKTS.	DIM. A	DIM. B	DIM. C	DIM. D
007-01-7206	1461-20B	007-01-7207	1461-20C	20	3.50 (88.9)	3.63 (92.2)	4.00 (101.6)	4.24 (107.7)
007-01-7156	1461-15B	007-01-7157	1461-15C	15	2.62 (66.5)	2.75 (69.9)	3.13 (79.5)	3.37 (85.6)
007-01-7106	1461-10B	007-01-7107	1461-10C	10	1.750 (44.45)	1.875 (47.63)	2.250 (57.15)	2.49 (63.2)
007-01-7056	1461-5B	007-01-7057	1461-5C	5	.875 (22.23)	1.000 (25.40)	1.375 (34.93)	1.615 (41.02)

SPECIAL INK STAMPED HOUSINGS CHART						
BEFORE INK STAMP	AFTER INK STAMP	NO. CKTS.	CIRCUIT NUMERALS			
007-01-7106	1461-10B	10	11 THRU 20			
007-01-7107	1461-10C	10	21 THRU 30			
007-01-7108	1461-10-1C	10	31 THRU 40			
007-01-7156	1461-15B	15	16 THRU 30			
007-01-7157	1461-15-2C	15	31 THRU 45			
007-01-7160	1461-15-3C	15	46 THRU 60			
007-01-7206	1461-20B	20	21 THRU 40			
007-01-7209	1461-20-2C	20	41 THRU 60			
007-01-7201	1461-20-3C	20	61 THRU 80			

20	19	18	17	16	15	14	13	12	11	10	9	8	7	6	5	4	3	2	1
<p>HOUSING, COMMUNING [1.025/(.684) DFT SET 1] INK INCORPORATED PART # 30-1461 DATE 1-20-11 1:025 BY 1-03-11 1:035 CHECKED BY 1-03-11 1:035 APPROVED BY 1-03-11 1:035 DATE 1-20-11 1:025 BY 1-03-11 1:035 CHECKED BY 1-03-11 1:035 APPROVED BY 1-03-11 1:035</p> <p>REVISIONS</p> <p>REV. DATE BY</p> <p>01 SEE SHEET 1</p> <p>02 SEE SHEET 1</p>																			

20 19 18 17 16 15 14 13 12 11 10 1461 9 8 7 6 5 4 3 2 1

- NOTES:**
- ▲ THESE HOUSINGS ARE FOR USE WITH THE 145T-+ TERMINALS AND MAY BE SUBDIVIDED BY USING THE 1461-K KEY.
 - ▲ THE HOUSINGS ARE ONLY AVAILABLE IN 5, 10, 15, AND 20 CIRCUIT SIZES.
 - ▲ PRODUCT SPECIFICATION PS 50-36 APPLIES.
 - ▲ THESE HOUSINGS CONFORM TO ULL AND C.S.A. REQUIREMENTS.
 - ▲ .060/(1.52) HIGH RAISED NUMERALS.
 - ▲ .125/(3.18) HIGH RECESSED NUMERALS ON A MATTE BACKGROUND.
 - ▲ .09/(2.3) HIGH INK STAMPED NUMERALS.



MATERIAL:
 POLYESTER, UNFILLED, 94V-0,
 COLOR BLACK,
 (REF.4 SMES 128C-1)

MODIFY: COLBY OLITS EC. NO. LCP2005-2756 CHROMAS BARBA 2005/10/01 APPROVED: [Signature] DATE: 2005/10/01	QUALITY SYMBOLS	GENERAL TOLERANCES (UNLESS SPECIFIED)	DRPENSION STYLE	SCALE	DESIGN UNITS	THIRD ANGLE PROJECTION
	▽=0	mm INCH	IN/MM	4:1	INCH	⊙
	▽=0	4 PLACES ±.005 ±.005	DRAWN BY	DATE	TITLE	
		3 PLACES ±.010 ±.010	AFG	95/12/18	HOUSING, COMMONING	
	2 PLACES ±0.25 ±.012	CHECKED BY	DATE		[.090/(2.29) OFFSET]	
	1 PLACE ±0.35 ±.012	RHR	95/12/18			
	ANGULAR +1/2°	APPROVED BY	DATE			
		DWF	95/12/18			
		MATERIAL NO.				
		SEE TABLE				
		DRAFT WHERE APPLICABLE MUST REMAIN WITHIN DIMENSIONS				
		SIZE D				
		THIS DRAWING CONTAINS INFORMATION THAT IS PROPRIETARY TO MOLEX INCORPORATED AND SHOULD NOT BE USED WITHOUT WRITTEN PERMISSION				

19 18 17 16 15 14 13 12 11 10 9 8 7 6 5 4 3 2 1