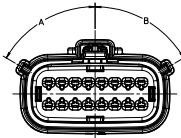
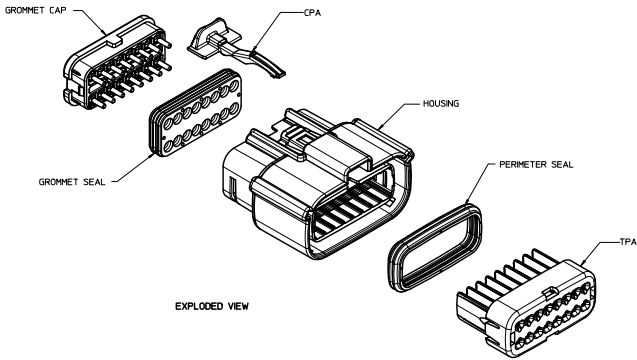


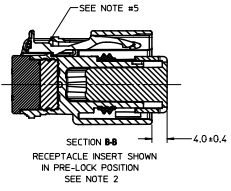
20 19 18 17 16 15 14 13 12 11 10 9 8 7 6 5 4 3 2 1



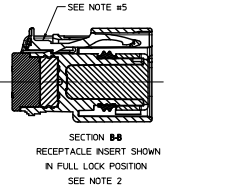
KEYING OPTION
SEE TABLE
SCALE 2:1



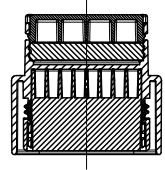
EXPLODED VIEW



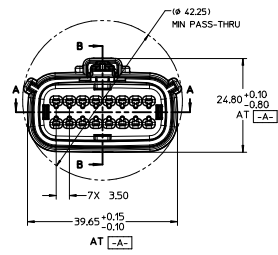
SECTION B-B
RECEPTACLE INSERT SHOWN
IN PRE-LOCK POSITION
SEE NOTE 2



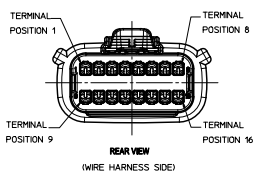
SECTION B-B
RECEPTACLE INSERT SHOWN
IN FULL LOCK POSITION
SEE NOTE 2



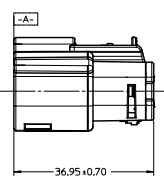
SECTION A-A



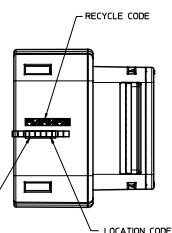
AT [-A-]



REAR VIEW
(WIRE HARNESS SIDE)



36.95 ± 0.70
AT [-A-]



- NOTES: UNLESS OTHERWISE SPECIFIED
- DESIGNED TO MATE WITH THE BLADE HOUSING ASSEMBLY SPECIFIED IN MOLEX CHARTERED DRAWING SD-33462-001, OR DEVICE CONNECTION AS SPECIFIED IN USCAR DRAWING 50-5-016-2-201.
 - ASSEMBLY SHIPPED WITH RECEPTACLE INSERT IN PRE-LOCK POSITION (SEE SECTION B-B PRE-LOCK). UPON FULL TERMINAL ASSEMBLY, EACH RECEPTACLE INSERT MUST BE SNAPPED INTO ITS FINAL LOCK POSITION.
 - FOR RECEPTACLE TERMINALS TO BE USED WITH THIS ASSEMBLY, SEE DRAWING SD-33012-002.
 - SYSTEM TO BE USED WITH WIRE WITHIN DIAMETER RANGE OF 1.5mm TO 2.5mm.
 - OPTIONAL CPA SHOWN IN ALL VIEWS. SEE TABLE FOR SPECIFIC ASSEMBLY OPTION AND NUMBER. CPA MUST BE INSERTED TO THE PRE-LOCK POSITION AS SHOWN IN SECTION B-B. WHEN SEATED CORRECTLY, CPA DOES NOT MOVE FREELY. ENGAGEMENT FORCE TO MOVE CPA FROM PRE-LOCK TO FINAL LOCK POSITION WHEN UNMATED: 40N MIN. DISENGAGEMENT FORCE TO MOVE CPA FROM FINAL LOCK TO PRE-LOCK POSITION: 3N MIN.
 - MATERIAL: SPS/NYLON BLEND, 20% GLASS FILLED.
 - REFER TO SHEETS 2 AND 3 OF THIS DRAWING FOR ALL PART NUMBER CONFIGURATIONS.
 - SHALL CONFORM TO PACKAGING SPECIFICATION PK-31300-903.
 - SHALL CONFORM TO PRODUCT SPECIFICATION PS-33472-000.
 - PACKAGING IN THE EVENT THAT INSERT IS FOUND IN THE SEATED (FINAL LOCK) POSITION. REFER TO MOLEX SPECIFICATION PS-34646-001 (AVAILABLE AT WWW.MOLEX.COM)
 - ASSEMBLY CONFORMS TO SAE/USCAR-2 REV 4 WITH THE FOLLOWING EXCEPTIONS:
TERMINAL INSERTION FORCE FOR WIRE SIZE ABOVE 2.5mm NOT EXCEEDING 2.69mm SHALL NOT EXCEED 40 NEWTONS.



SCALE 1:1

ENTER DESCRIPTION ECN: 148300-001 DRAWING NO: 20110106 APPROVED BY: [Signature] DATE: 2010/10/27	QUALITY SYMBOLS ∇=0 ∇=0	GENERAL TOLERANCES (UNLESS SPECIFIED) 4 PLACES ± 0.10 INCH 3 PLACES ± 0.15 INCH 2 PLACES ± 0.20 INCH 1 PLACE ± 0.30 INCH ANGULAR ± 3°	DIMENSION STYLE MM ONLY	SCALE 2:1	DESIGN UNITS METRIC	THIRD ANGLE PROJECTION	
	DRAWN BY: DGRFFITHS CHECKED BY: DGRFFITHS APPROVED BY: VKOSHY	DATE: 05-29-03 DATE: 05-29-03 DATE: 2010/10/27	TITLE MX150 STANDARD CONNECTOR RCPT 2 ROW HOUSING SEALED, 16 WAY	MATERIAL NO. SEE TABLE	DOCUMENT NO. SD-33472-161	SHEET NO. 1 OF 4	MOLEX INCORPORATED
	DRAFT WHERE APPLICABLE MUST REMAIN WITHIN DIMENSIONS						
	THIS DRAWING CONTAINS INFORMATION THAT IS PROPRIETARY TO MOLEX INCORPORATED AND SHOULD NOT BE USED WITHOUT WRITTEN PERMISSION						

19 18 17 16 15 14 13 12 11 10 9 8 7 6 5 4 3 2 1

