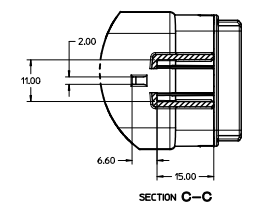
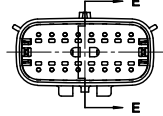
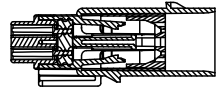
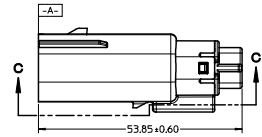
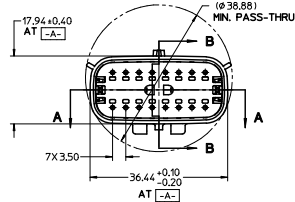
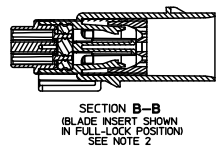
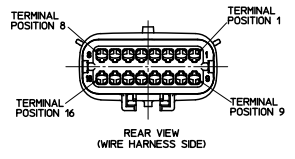
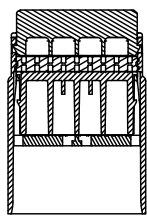
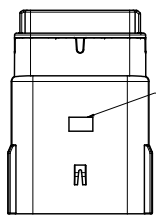
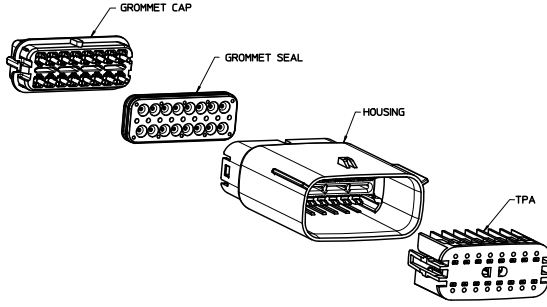
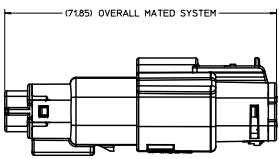


20 19 18 17 16 15 14 13 12 11 10 9 8 7 6 5 4 3 2 1



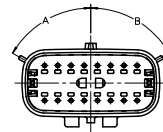
NOTES: UNLESS OTHERWISE STATED

- DESIGNED TO MATE WITH RECEPTACLE HOUSING ASSEMBLY SPECIFIED IN MOLEX CHARTED DRAWING SD-33472-161.
- ASSEMBLY SHIPPED WITH BLADE INSERT IN PRE-LOCKED POSITION (SEE SECTION E-E PRE-LOCK). UPON FULL TERMINAL ASSEMBLY EACH BLADE INSERT MUST BE SNAPPED INTO ITS FINAL-LOCK POSITION.
- FOR BLADE TERMINALS TO BE USED WITH THIS ASSEMBLY SEE DRAWING SD-33000-001.
- SYSTEM TO BE USED WITH WIRE WITHIN DIAMETER RANGE OF 1.5mm TO 2.5mm.
- MATERIAL: SPS/NYLON BLEND, 20% GLASS FILLED.
- SHALL CONFORM TO PACKAGING SPECIFICATION PK-31300-635.
- SHALL CONFORM TO PRODUCT SPECIFICATION PS-33472-000.
- ASSEMBLY CONFORMS TO SAE/USCAR-2 REV 4 WITH THE FOLLOWING EXCEPTIONS: TERMINAL INSERTION FORCE FOR WIRE SIZE ABOVE 2.5mm NOT EXCEEDING 2.69mm SHALL NOT EXCEED 45 NEWTONS.

ENTER DESCRIPTION MFR. PART NO. MFR. DRAWING NO. CHECKED: APPROVED: DATE:	QUALITY SYMBOLS ∇=0 ∇=0 ∇=0	GENERAL TOLERANCES (UNLESS SPECIFIED) 4 PLACES ± .--- ± .--- 3 PLACES ± .--- ± .--- 2 PLACES ± 0.10 ± .--- 1 PLACE ± 0.3 ± .--- ANGULAR ± 3°	DIMENSION STYLE MM ONLY SCALE 2:1 DESIGN UNITS METRIC THIRD ANGLE PROJECTION	DRAWN BY DATE DGRFFITHS 05-29-03 CHECKED BY DATE DGRFFITHS 05-29-03 APPROVED BY DATE VKOSHY 2010/04/06	TITLE MX150 BLADE CONNECTOR ASSEMBLY 2 ROW SEALED, 16 WAY MOLEX INCORPORATED	MATERIAL NO. SEE TABLE DOCUMENT NO. SD-33482-161	SHEET NO. 1 OF 4
	DRAFT WHERE APPLICABLE MUST REMAIN WITHIN DIMENSIONS						
	THIS DRAWING CONTAINS INFORMATION THAT IS PROPRIETARY TO MOLEX INCORPORATED AND SHOULD NOT BE USED WITHOUT WRITTEN PERMISSION						
	MOLEX INCORPORATED						

19 18 17 16 15 14 13 12 11 10 9 8 7 6 5 4 3 2 1

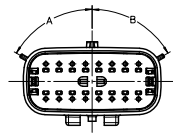
ASSEMBLY PART NUMBER	COLOR	KEYING OPTION	DIMENSIONS (DEGREES)		CAVITY TYPE & STATUS (X = PLUGGED)															
			A	B	1	2	3	4	5	6	7	8	9	10	11	12	13	14	15	16
33482-1601	BLACK	A	60	60																
33482-1602	LT.GRAY	B	25	60																
33482-1603	BROWN	C	60	25																
33482-1604	GREEN	D	25	25																
33482-1605	CUSTOM	TBD																		
33482-1606	BLACK	A	60	60							X									
33482-1607	LT.GRAY	B	25	60							X									
33482-1608	BROWN	C	60	25							X									
33482-1609	GREEN	D	25	25							X									
33482-1610	CUSTOM	TBD									X									
33482-1611	BLACK	A	60	60							X	X								
33482-1612	LT.GRAY	B	25	60							X	X								
33482-1613	BROWN	C	60	25							X	X								
33482-1614	GREEN	D	25	25							X	X								
33482-1615	CUSTOM	TBD									X	X								
33482-1616	BLACK	A	60	60	X						X	X								
33482-1617	LT.GRAY	B	25	60	X						X	X								
33482-1618	BROWN	C	60	25	X						X	X								
33482-1619	GREEN	D	25	25	X						X	X								
33482-1620	CUSTOM	TBD			X						X	X								
33482-1621	BLACK	A	60	60	X	X	X	X	X	X	X	X	X	X	X	X	X	X	X	
33482-1622	LT.GRAY	B	25	60	X	X	X	X	X	X	X	X	X	X	X	X	X	X	X	
33482-1623	BROWN	C	60	25	X	X	X	X	X	X	X	X	X	X	X	X	X	X	X	
33482-1624	GREEN	D	25	25	X	X	X	X	X	X	X	X	X	X	X	X	X	X	X	
33482-1625	CUSTOM	TBD			X	X	X	X	X	X	X	X	X	X	X	X	X	X	X	
33482-1626	BLACK	A	60	60														X		
33482-1627	BLACK	A	60	60	X						X	X							X	
33482-1628	LT.GRAY	B	25	60	X						X	X							X	
33482-1629	BROWN	C	60	25	X						X	X							X	
33482-1630	GREEN	D	25	25	X						X	X							X	
33482-1631	CUSTOM	TBD			X						X	X							X	
33482-1632	BLACK	A	60	60			X			X	X				X	X	X			
33482-1633	BLACK	A	60	60			X	X	X					X	X	X	X	X		
33482-1634	BLACK	A	60	60						X	X				X	X	X			
33482-1635	LT.GRAY	B	25	60						X					X	X	X	X		
33482-1636	BLACK	A	60	60							X	X			X	X	X	X		
33482-1637	BLACK	A	60	60							X	X			X	X	X	X		
33482-1638	BLACK	A	60	60							X	X	X	X				X	X	
33482-1639	BLACK	A	60	60														X		
33482-1640	BLACK	A	60	60						X									X	
33482-1641	BLACK	A	60	60						X									X	
33482-1642	LT.GRAY	B	25	60			X		X	X					X		X			
33482-1643	BLACK	A	60	60			X			X	X							X	X	
33482-1644	LT.GRAY	B	25	60			X													
33482-1645	LT.GRAY	B	25	60			X		X	X										
33482-1646	BLACK	A	60	60			X		X	X					X					
33482-1647	BLACK	A	60	60			X												X	
33482-1648	BLACK	A	60	60											X					
33482-1649	LT.GRAY	B	25	60															X	
33482-1650	LT.GRAY	B	25	60			X								X		X			



ENTER DESCRIPTION 33482-1650 DRAWN: SONGS 2010/01/07 CHKD: WOSH APPR: WOSH REV:	QUALITY SYMBOLS	GENERAL TOLERANCES (UNLESS SPECIFIED)	DIMENSION STYLE	SCALE	DESIGN UNITS	THIRD ANGLE PROJECTION
	$\nabla=0$ $\nabla=0$ $\nabla=0$	4 PLACES ± --- INCH 3 PLACES ± --- INCH 2 PLACES ± 0.10 INCH 1 PLACE ± 0.3 INCH ANGULAR ± 3°	MM ONLY	2:1	METRIC	<input checked="" type="checkbox"/> THIRD ANGLE PROJECTION
	DRAWN BY	DATE	FILE	MX150 BLADE CONNECTOR ASSEMBLY 2 ROW SEALED, 16 WAY		
	CHECKED BY DATE APPROVED BY DATE	DGRFFTHS 05-29-03 DGRFFTHS 05-29-03 WKOSHY 2010/04/04	MOLEX INCORPORATED MATERIAL NO. SD-33482-161 DOCUMENT NO.	SHEET NO. 2 OF 4		
DRAFT WHERE APPLICABLE MUST REMAIN WITHIN DIMENSIONS		THIS DRAWING CONTAINS INFORMATION THAT IS PROPRIETARY TO MOLEX INCORPORATED AND SHOULD NOT BE USED WITHOUT WRITTEN PERMISSION				

20 19 18 17 16 15 14 13 12 11 10 9 8 7 6 5 4 3 2 1

ASSEMBLY PART NUMBER	COLOR	KEYING OPTION	DIMENSIONS (DEGREES)		CAVITY TYPE & STATUS (X = PLUGGED)															
			A	B	1	2	3	4	5	6	7	8	9	10	11	12	13	14	15	16
			33482-1651	LT.GRAY	B	25	60													
33482-1652	LT.GRAY	B	25	60							X	X	X							X
33482-1653	BLACK	A	60	60									X							X
33482-1654	BLACK	A	60	60				X					X			X				X
33482-1655	LT.GRAY	B	25	60				X					X			X			X	X
33482-1656	LT.GRAY	B	25	60									X							X
33482-1657	BLACK	A	60	60	X							X								
33482-1658	LT.GRAY	B	25	60		X		X	X	X	X				X			X	X	
33482-1659	LT.GRAY	B	25	60		X			X	X	X									X
33482-1660	LT.GRAY	B	25	60		X					X									X
33482-1661	BLACK	A	60	60		X		X								X				X
33482-1662	LT.GRAY	B	25	60		X	X								X			X	X	
33482-1663	BLACK	A	60	60		X														
33482-1664	BLACK	A	60	60			X				X		X						X	X
33482-1665	BLACK	A	60	60			X	X	X	X	X		X	X					X	X
33482-1666	BLACK	A	60	60		X			X	X	X		X			X	X	X	X	X
33482-1667	BLACK	A	60	60		X			X	X					X			X	X	X
33482-1668	BLACK	A	60	60		X			X	X			X	X			X	X	X	X
33482-1669	BLACK	A	60	60		X			X				X			X		X	X	
33482-1670	BLACK	A	60	60		X		X	X	X	X		X	X	X	X	X	X	X	
33482-1671	BLACK	A	60	60		X			X	X			X			X		X	X	X
33482-1672	BLACK	A	60	60				X				X				X		X	X	X
33482-1673	BLACK	A	60	60		X				X	X									
33482-1674	BLACK	A	60	60		X			X	X										
33482-1675	BLACK	A	60	60		X			X	X				X						
33482-1676	BLACK	A	60	60					X	X	X					X				
33482-1677	BLACK	A	60	60					X	X	X			X			X			
33482-1678	BLACK	A	60	60					X	X	X				X		X			
33482-1679	BLACK	A	60	60					X	X	X			X	X	X	X	X	X	
33482-1680	BLACK	A	60	60					X	X	X			X	X	X	X	X	X	
33482-1681	BLACK	A	60	60					X	X	X								X	X
33482-1682	BLACK	A	60	60					X	X	X								X	X
33482-1683	BLACK	A	60	60					X	X	X								X	X
33482-1684	BLACK	A	60	60	X	X	X	X	X	X	X					X		X	X	X
33482-1685	BLACK	A	60	60														X	X	X
33482-1686	BLACK	A	60	60								X						X	X	X
33482-1687	BLACK	A	60	60							X	X			X	X	X	X	X	
33482-1688	BLACK	A	60	60							X	X			X	X	X	X	X	
33482-1689	BLACK	A	60	60							X	X			X		X			
33482-1690	BLACK	A	60	60							X	X			X		X			
33482-1691	BLACK	A	60	60					X						X					
33482-1692	BLACK	A	60	60		X						X	X						X	X
33482-1693	BLACK	A	60	60		X						X							X	
33482-1694	BLACK	A	60	60		X			X	X	X	X		X	X	X	X	X	X	X
33482-1695	BLACK	A	60	60		X			X	X	X	X		X	X	X	X	X	X	X
33482-1700	BLACK	A	60	60	X	X	X	X	X	X			X	X	X	X	X	X	X	X
33482-1701	BLACK	A	60	60	X	X	X	X	X	X			X	X	X	X	X	X	X	X
33482-1702	BLACK	A	60	60					X	X	X	X		X	X	X	X	X	X	X
33482-1703	BLACK	A	60	60					X	X	X	X		X	X	X	X	X	X	X
33482-1704	BLACK	A	60	60	X	X	X	X	X	X									X	X
33482-1705	BLACK	A	60	60								X	X	X	X	X	X	X	X	X
33482-1706	BLACK	A	60	60								X	X	X	X	X	X	X	X	X
33482-1707	BLACK	A	60	60						X	X	X	X						X	X
33482-1708	BLACK	A	60	60															X	X
33482-1709	BLACK	A	60	60												X	X	X	X	X
33482-1710	BLACK	A	60	60	X	X	X	X	X	X	X	X	X	X	X	X	X	X	X	X
33482-1711	LT.GRAY	B	25	60	X	X	X	X	X	X	X	X	X	X	X	X	X	X	X	X
33482-1712	LT.GRAY	B	25	60	X	X	X	X	X	X	X	X	X	X	X	X	X	X	X	X



ENTER DESCRIPTION NEW BLADE CONNECTOR DRAWN: SONGS 2010/01/27 CHECKED: APPR: MISHR 2010/01/27 REV:	QUALITY SYMBOLS	GENERAL TOLERANCES (UNLESS SPECIFIED)	DIMENSION STYLE	SCALE	DESIGN UNITS	THIRD ANGLE PROJECTION	
	$\nabla=0$ $\nabla=0$ $\nabla=0$	4 PLACES ± 0.10 ± 0.004 3 PLACES ± 0.10 ± 0.004 1 PLACE ± 0.3 ± 0.012 ANGULAR ± 3°	mm INCH ± 0.10 ± 0.004 ± 0.10 ± 0.004 ± 0.3 ± 0.012	DIMENSION STYLE MM ONLY DRAWN BY DATE DGRFF1THS 05-29-03 CHECKED BY DATE DGRFF1THS 05-29-03 APPROVED BY DATE VKOSHY 2010/04/06	SCALE 2:1	DESIGN UNITS METRIC	THIRD ANGLE PROJECTION
	DRAFT WHERE APPLICABLE MUST REMAIN WITHIN DIMENSIONS		SEE TABLE		MATERIAL NO. DOCUMENT NO. SD-33482-161		SHEET NO. 3 OF 4
	THIS DRAWING CONTAINS INFORMATION THAT IS PROPRIETARY TO MOLEX INCORPORATED AND SHOULD NOT BE USED WITHOUT WRITTEN PERMISSION						

19 18 17 16 15 14 13 12 11 10 9 8 7 6 5 4 3 2 1

20 19 18 17 16 15 14 13 12 11 10 9 8 7 6 5 4 3 2 1

ASSEMBLY PART NUMBER	COLOR	KEYING OPTION	DIMENSIONS (DEGREES)		CAVITY TYPE & STATUS (X - PLUGGED)															
			A	B	1	2	3	4	5	6	7	8	9	10	11	12	13	14	15	16
33482-1713	BLACK	A	60	60		X	X	X	X	X	X	X	X	X	X	X	X	X	X	
33482-1714	BLACK	A	60	60		X	X	X	X	X	X	X	X	X	X	X	X	X	X	

ENTER DESCRIPTION MEX MEX MEX MEX MEX DRAWN BY: SONGS 2010/01/27 CHECKED BY: WJ APPROVED BY: WJ DATE: 2010/01/27	QUALITY SYMBOLS ∇=0 ∇=0 ∇=0	GENERAL TOLERANCES (UNLESS SPECIFIED) 4 PLACES ± 0.15 ± 0.15 3 PLACES ± 0.10 ± 0.10 2 PLACES ± 0.10 ± 0.10 1 PLACE ± 0.3 ± 0.3 ANGULAR ± 3°	DIMENSION STYLE MM ONLY	SCALE 2:1	DESIGN UNITS METRIC	THIRD ANGLE PROJECTION	
	DRAWN BY: DGRFF DATE: 05-29-03	CHECKED BY: DGRFF DATE: 05-29-03	APPROVED BY: WKOSHY DATE: 2010/04/04	MATERIAL NO. SEE TABLE	DOCUMENT NO. SD-33482-161	TITLE MX150 BLADE CONNECTOR ASSEMBLY 2 ROW SEALED, 16 WAY	SHEET NO. 4 OF 4
	DRAFT WHERE APPLICABLE MUST REMAIN WITHIN DIMENSIONS						
	THIS DRAWING CONTAINS INFORMATION THAT IS PROPRIETARY TO MOLEX INCORPORATED AND SHOULD NOT BE USED WITHOUT WRITTEN PERMISSION						

19 18 17 16 15 14 13 12 11 10 9 8 7 6 5 4 3 2 1