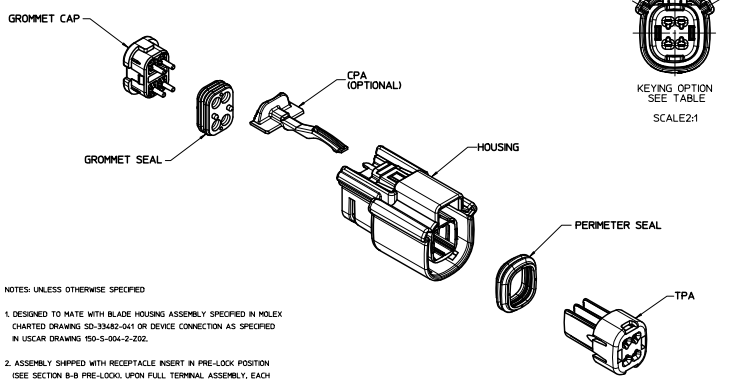
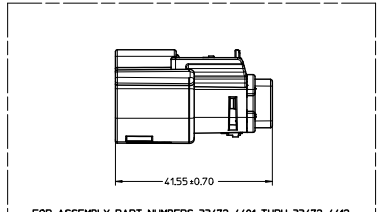
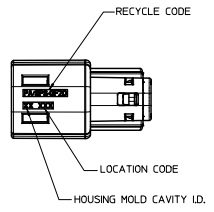
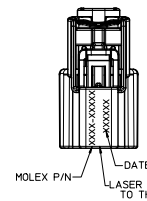
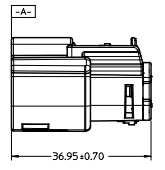
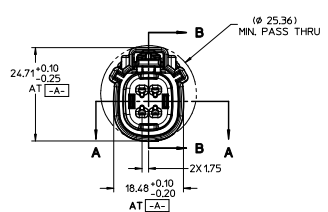
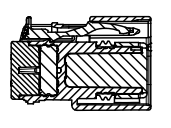
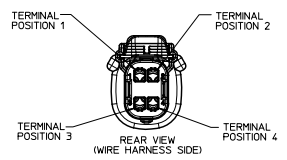
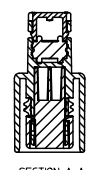
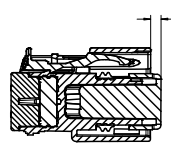
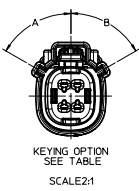




20 19 18 17 16 15 14 13 12 11 10 9 8 7 6 5 4 3 2 1



- NOTES: UNLESS OTHERWISE SPECIFIED
- DESIGNED TO MATE WITH BLADE HOUSING ASSEMBLY SPECIFIED IN MOLEX CHARTERED DRAWING SD-33472-041 OR DEVICE CONNECTION AS SPECIFIED IN USCAR DRAWING 150-5-004-2-202.
  - ASSEMBLY SHIPPED WITH RECEPTACLE INSERT IN PRE-LOCK POSITION (SEE SECTION B-B PRE-LOCK). UPON FULL TERMINAL ASSEMBLY, EACH RECEPTACLE INSERT MUST BE SNAPPED INTO ITS FINAL LOCK POSITION WITH TERMINALS. 90N MAX. DISENGAGEMENT FORCE TO MOVE TPA FROM PRE-LOCK POSITION TO FINAL LOCK POSITION WITH TERMINALS: 90N MAX.
  - FOR RECEPTACLE TERMINALS TO BE USED WITH THIS ASSEMBLY, SEE DRAWING SD-33072-002.
  - SYSTEM TO BE USED WITH WIRE WITH DIAMETER RANGE OF 15mm TO 25mm.
  - OPTIONAL CPA SHOWN IN ALL VIEWS. SEE TABLE FOR SPECIFIC ASSEMBLY OPTION AND NUMBER. CPA MUST BE INSERTED TO THE PRE-LOCK POSITION, AS SHOWN IN SECTION B-B. WHEN SEATED CORRECTLY, CPA DOES NOT MOVE FREELY. ENGAGEMENT FORCE TO MOVE CPA FROM PRE-LOCK POSITION TO FINAL LOCK POSITION, WHEN UNLIMITED 40N MIN. DISENGAGEMENT FORCE TO MOVE CPA FROM FINAL LOCK TO PRE-LOCK POSITION: 3N MIN.
  - MATERIAL: SPS/NYLON BLEND, 20% GLASS FILLED.
  - CHENGDU ASSEMBLIES SHALL CONFORM TO PACKAGING SPECIFICATION PK-31100-635
  - SHALL CONFORM TO PRODUCT SPECIFICATION PS-33472-000.
  - PACKAGING: IN THE EVENT THAT INSERT IS FOUND IN THE SEATED (FINAL LOCK) POSITION, REFER TO MOLEX SPECIFICATION PS-34646-001, AVAILABLE AT WWW.MOLEX.COM
  - DATE CODE: FIRST TWO DIGITS IS CALENDAR YEAR, THIRD THROUGH FIFTH DIGIT IS DAY NUMBER OF THE CALENDAR YEAR. FEB 3RD-034
  - REFER TO SHEET #2 FOR ALL PART NUMBER OPTIONS.
  - ASSEMBLY PART NUMBERS 33472-0435 THRU 33472-0439 WERE 33472-4413 THRU 33472-4417
  - ASSEMBLY CONFORMS TO SAE/USCAR-2 REV 4 WITH THE FOLLOWING EXCEPTIONS: TERMINAL INSERTION FORCE FOR WIRE SIZE ABOVE 25mm NOT EXCEEDING 2.69mm SHALL NOT EXCEED 40 NEWTONS.



<b>ENTER DESCRIPTION</b> EN: MANSAMBOUR 2011/03/04 CH: CHENGLUO 2011/03/08 APPR: WOSHT 2011/03/11	<b>QUALITY SYMBOLS</b> ∇=0 ∇=0 ∇=0	<b>GENERAL TOLERANCES (UNLESS SPECIFIED)</b> 4 PLACES ± --- INCH 3 PLACES ± --- INCH 2 PLACES ± 0.10 INCH 1 PLACE ± 0.3 INCH ANGULAR ± 3 °	<b>DIMENSION STYLE</b> MM ONLY	DRAWN BY: MANSAMBOUR 05-03-06 CHECKED BY: DGR IFFITHS 06-22-06 EXPRESSED BY: SMARCEAU 06-22-06	SCALE: 2:1 DESIGN UNITS: METRIC THIRD ANGLE PROJECTION
	<b>FILE: MX150 RECEPT CONNECTOR ASSEMBLY 2 ROW SEALED, 4 WAY</b>				
	MOLEX INCORPORATED				
	MATERIAL NO. SD-33472-041 DOCUMENT NO. SD-33472-041 SHEET NO. 1 OF 2				

15: I:\proj\D\_P\_AH.1 Rev. F 2009/06/17 19 18 17 16 15 14 13 12 11 10 9 8 7 6 5 4 3 2 1

20 19 18 17 16 15 14 13 12 11 10 9 8 7 6 5 4 3 2 1

ASSEMBLY PART NUMBER	CPA	COLOR	KEYING OPTION	DIMENSIONS (DEGREES)		CAVITY TYPE & STATUS (X = PLUGGED)				STATUS	COMMENTS	
				A	B	1	2	3	4			
33472-0401	-	BLACK	A	60	60						SALEABLE	RECOMMENDED, TEMPERATURE CLASS 4 (-40°C TO 150°C)
33472-0402	-	LIGHT GRAY	B	60	40						SALEABLE	RECOMMENDED, TEMPERATURE CLASS 4 (-40°C TO 150°C)
33472-0403	-	BROWN	C	40	60						DESIGN CONCEPT	NOT RECOMMENDED, USE 33472-0442, SAME KEY IN DIFFERENT COLOR
33472-0404	-	GREEN	D	40	40						DESIGN CONCEPT	NOT RECOMMENDED, USE 33472-0443, SAME KEY IN DIFFERENT COLOR
33472-0406	YES	BLACK	A	60	60						SALEABLE	RECOMMENDED, TEMPERATURE CLASS 4 (-40°C TO 150°C)
33472-0407	YES	LIGHT GRAY	B	60	40						SALEABLE	RECOMMENDED, TEMPERATURE CLASS 4 (-40°C TO 150°C)
33472-0408	YES	BROWN	C	40	60						DESIGN CONCEPT	NOT RECOMMENDED, USE 33472-0444, SAME KEY IN DIFFERENT COLOR
33472-0409	YES	GREEN	D	40	40						DESIGN CONCEPT	NOT RECOMMENDED, USE 33472-0445, SAME KEY IN DIFFERENT COLOR
33472-0431	-	BLACK	A	60	60	X	X	X	X		SALEABLE	RECOMMENDED, TEMPERATURE CLASS 4 (-40°C TO 150°C)
33472-0432	-	LIGHT GRAY	B	60	40	X	X	X	X		SALEABLE	RECOMMENDED, TEMPERATURE CLASS 4 (-40°C TO 150°C)
33472-0433	-	BROWN	C	40	60	X	X	X	X		DESIGN CONCEPT	NOT RECOMMENDED, USE 33472-0446, SAME KEY IN DIFFERENT COLOR
33472-0434	-	GREEN	D	40	40	X	X	X	X		DESIGN CONCEPT	NOT RECOMMENDED, USE 33472-0447, SAME KEY IN DIFFERENT COLOR
33472-4401	-	BLACK	A	60	60						SALEABLE	RECOMMENDED, TEMPERATURE CLASS 4 (-40°C TO 150°C)
33472-4402	-	LIGHT GRAY	B	60	40						SALEABLE	RECOMMENDED, TEMPERATURE CLASS 4 (-40°C TO 150°C)
33472-4403	-	DARK GRAY	C	40	60						SALEABLE	RECOMMENDED, TEMPERATURE CLASS 4 (-40°C TO 150°C)
33472-4404	-	STONE GRAY	D	40	40						SALEABLE	RECOMMENDED, TEMPERATURE CLASS 4 (-40°C TO 150°C)
33472-4405	YES	BLACK	A	60	60						SALEABLE	RECOMMENDED, TEMPERATURE CLASS 4 (-40°C TO 150°C)
33472-4406	YES	LIGHT GRAY	B	60	40						SALEABLE	RECOMMENDED, TEMPERATURE CLASS 4 (-40°C TO 150°C)
33472-4407	YES	DARK GRAY	C	40	60						SALEABLE	RECOMMENDED, TEMPERATURE CLASS 4 (-40°C TO 150°C)
33472-4408	YES	STONE GRAY	D	40	40						SALEABLE	RECOMMENDED, TEMPERATURE CLASS 4 (-40°C TO 150°C)
33472-4409	-	BLACK	A	60	60	X	X	X	X		SALEABLE	RECOMMENDED, TEMPERATURE CLASS 4 (-40°C TO 150°C)
33472-4410	-	LIGHT GRAY	B	60	40	X	X	X	X		SALEABLE	RECOMMENDED, TEMPERATURE CLASS 4 (-40°C TO 150°C)
33472-4411	-	DARK GRAY	C	40	60	X	X	X	X		SALEABLE	RECOMMENDED, TEMPERATURE CLASS 4 (-40°C TO 150°C)
33472-4412	-	STONE GRAY	D	40	40	X	X	X	X		SALEABLE	RECOMMENDED, TEMPERATURE CLASS 4 (-40°C TO 150°C)
33472-0435	-	BLACK	A	60	60	X	X	X	X		SALEABLE	RECOMMENDED, TEMPERATURE CLASS 4 (-40°C TO 150°C)
33472-0436	-	BLACK	A	60	60	X	X	X	X		SALEABLE	RECOMMENDED, TEMPERATURE CLASS 4 (-40°C TO 150°C)
33472-0437	-	BLACK	A	60	60	X	X	X	X		SALEABLE	RECOMMENDED, TEMPERATURE CLASS 4 (-40°C TO 150°C)
33472-0438	-	BLACK	A	60	60	X	X	X	X		SALEABLE	RECOMMENDED, TEMPERATURE CLASS 4 (-40°C TO 150°C)
33472-0439	-	BLACK	A	60	60	X	X	X	X		SALEABLE	RECOMMENDED, TEMPERATURE CLASS 4 (-40°C TO 150°C)
33472-0440	-	BLACK	A	60	60	X	X	X	X		SALEABLE	RECOMMENDED, TEMPERATURE CLASS 4 (-40°C TO 150°C)
33472-0441	-	BLACK	A	60	60	X	X	X	X		SALEABLE	RECOMMENDED, TEMPERATURE CLASS 4 (-40°C TO 150°C)
33472-0442	-	DARK GRAY	C	40	60						SALEABLE	RECOMMENDED, TEMPERATURE CLASS 4 (-40°C TO 150°C)
33472-0443	-	STONE GRAY	D	40	40						SALEABLE	RECOMMENDED, TEMPERATURE CLASS 4 (-40°C TO 150°C)
33472-0444	YES	DARK GRAY	C	40	60						SALEABLE	RECOMMENDED, TEMPERATURE CLASS 4 (-40°C TO 150°C)
33472-0445	YES	STONE GRAY	D	40	40						SALEABLE	RECOMMENDED, TEMPERATURE CLASS 4 (-40°C TO 150°C)
33472-0446	-	DARK GRAY	C	40	60	X	X	X	X		SALEABLE	RECOMMENDED, TEMPERATURE CLASS 4 (-40°C TO 150°C)
33472-0447	-	STONE GRAY	D	40	40	X	X	X	X		SALEABLE	RECOMMENDED, TEMPERATURE CLASS 4 (-40°C TO 150°C)
33472-0448	-	BLACK	A	60	60	X	X	X	X		SALEABLE	RECOMMENDED, TEMPERATURE CLASS 4 (-40°C TO 150°C)
33472-0449	YES	BLACK	A	60	60	X	X	X	X		SALEABLE	RECOMMENDED, TEMPERATURE CLASS 4 (-40°C TO 150°C)

<b>ENTER DESCRIPTION</b> ECN: 33472-0449 2010/03/04 CHKD: MJC 2010/03/08 APPR: MJC 2010/03/11	QUALITY SYMBOLS ∇=0 ∇=0	GENERAL TOLERANCES (UNLESS SPECIFIED) 4 PLACES ±.000 ±.000 3 PLACES ±.005 ±.005 2 PLACES ±.010 ±.010 1 PLACE ±.030 ±.030 ANGULAR ± 3°	DIMENSION STYLE MM ONLY	SCALE 1:1	DESIGN UNITS METRIC	THIRD ANGLE PROJECTION	
	DRAWN BY MWANSLAMBROU	DATE 05-03-06	CHECKED BY DGR IFFITHS	DATE 06-22-06	TITLE MX150 RECEPT CONNECTOR ASSEMBLY 2 ROW SEALED, 4 WAY		
	APPROVED BY SMARCEAU	DATE 06-22-06	MATERIAL NO. SEE TABLE			DOCUMENT NO. SD-33472-041	SHEET NO. 2 OF 2
	DRAFT WHERE APPLICABLE MUST REMAIN WITHIN DIMENSIONS						THIS DRAWING CONTAINS INFORMATION THAT IS PROPRIETARY TO MOLEX INCORPORATED AND SHOULD NOT BE USED WITHOUT WRITTEN PERMISSION