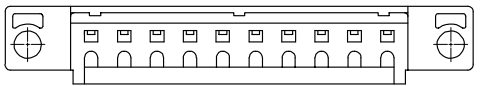
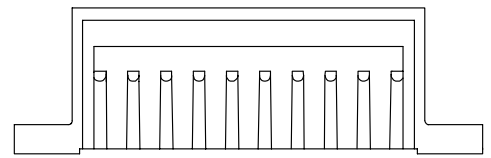
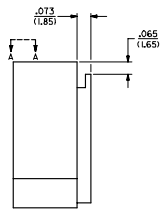
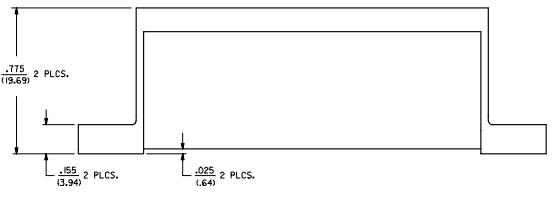
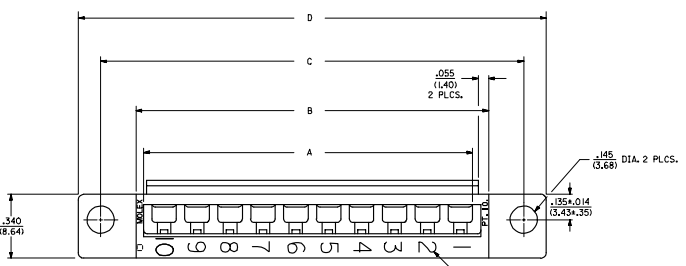


20 19 18 17 16 15 14 13 12 11 10 9 8 7 6 5 4 3 2 1

- NOTES:**
- ▲ THESE HOUSINGS ARE FOR USE WITH THE 145T-+ TERMINALS AND MAY BE SUBDIVIDED BY USING THE 1461-K KEY.
 - ▲ THE HOUSINGS ARE ONLY AVAILABLE IN 5, 10, 15, AND 20 CIRCUIT SIZES.
 - ▲ PRODUCT SPECIFICATION PS 50-36 APPLIES.
 - ▲ THESE HOUSINGS CONFORM TO U.L. AND C.S.A. REQUIREMENTS.
 - ▲ .060/(1.52) HIGH RAISED NUMERALS.
 - ▲ .125/(3.18) HIGH RECESSED NUMERALS ON A MATTE BACKGROUND.
 - ▲ .09/(2.3) HIGH INK STAMPED NUMERALS.
8. PACKAGE PER PK-1461-100.



4	01
3	0
2	01
1	0

MODIFY CORE OUTS EC NS. LCP2005-2756 CHROSBORNER 2005/10/01 APPROVED FOR RELEASE DATE 2007/10/01	QUALITY SYMBOLS	GENERAL TOLERANCES (UNLESS SPECIFIED)	DIMENSION STYLE	SCALE	DESIGN UNITS	THIRD ANGLE PROJECTION
	▽=0	mm INCH	IN/MM	4:1	INCH	⊙
	▽=0	4 PLACES ±--- ±---	DRAWN BY	DATE	TITLE	
	▽=0	3 PLACES ±--- ±.010	AFG	9/1/02/18	HOUSING, COMMONING	
	2 PLACES ±0.25 ±.012	CHECKED BY	DATE			
	1 PLACE ±0.35 ±---	RHR	9/1/02/18			
	ANGULAR ±1/2°	APPROVED BY	DATE			
		DWF	9/1/02/18			
	DRAFT WHERE APPLICABLE MUST REMAIN WITHIN DIMENSIONS	SEE TABLE				
		SIZE				
		D				

SHT REV	
4	01
3	0
2	01
1	0

20 19 18 17 16 15 14 13 12 11 10 9 8 7 6 5 4 3 2 1

PART NO.	ENG. NO.	NO. CKTS.	DIMENSIONS				CIRCUIT NUMERALS
			DIM. A	DIM. B	DIM. C	DIM. D	
07-01-7201	1461-20	20	3.50 (88.9)	3.63 (92.2)	4.00 (101.6)	4.24 (107.7)	11 THRU 20
07-01-7151	1461-15	15	2.62 (66.5)	2.75 (69.9)	3.13 (79.5)	3.37 (85.6)	21 THRU 30
07-01-7101	1461-10	10	1.750 (44.45)	1.875 (47.63)	2.250 (57.15)	2.49 (63.2)	16 THRU 30
07-01-7051	1461-5	5	.875 (22.23)	1.000 (25.40)	1.375 (34.93)	1.615 (41.02)	46 THRU 60

SPECIAL NUMBERED HOUSINGS CHART							
PART NO.	ENG. NO.	NO. CKTS.	CIRCUIT NUMERALS				
07-01-7202	1461-20-1	20	21 THRU 40				
07-01-7203	1461-20-2	20	41 THRU 60				
07-01-7204	1461-20-3	20	61 THRU 80				

INK STAMPED HOUSINGS								
BEFORE INK STAMP	AFTER INK STAMP	BEFORE INK STAMP	AFTER INK STAMP	NO. CKTS.	DIM. A	DIM. B	DIM. C	DIM. D
007-01-7206	1461-20B	007-01-7207	1461-20C	20	3.50 (88.9)	3.63 (92.2)	4.00 (101.6)	4.24 (107.7)
007-01-7156	1461-15B	007-01-7157	1461-15C	15	2.62 (66.5)	2.75 (69.9)	3.13 (79.5)	3.37 (85.6)
007-01-7106	1461-10B	007-01-7107	1461-10C	10	1.750 (44.45)	1.875 (47.63)	2.250 (57.15)	2.49 (63.2)
007-01-7056	1461-5B	007-01-7057	1461-5C	5	.875 (22.23)	1.000 (25.40)	1.375 (34.93)	1.615 (41.02)

SPECIAL INK STAMPED HOUSINGS CHART							
BEFORE INK STAMP	AFTER INK STAMP	NO. CKTS.	CIRCUIT NUMERALS				
007-01-7206	1461-20B	007-01-7208	1461-20-1C	20	21 THRU 40		
		007-01-7209	1461-20-2C	20	41 THRU 60		
		007-01-7201	1461-20-3C	20	61 THRU 80		

REV. 0	DATE 01/10/2011	BY 1000
REV. 1	DATE 01/10/2011	BY 1000
REV. 2	DATE 01/10/2011	BY 1000
REV. 3	DATE 01/10/2011	BY 1000
REV. 4	DATE 01/10/2011	BY 1000
REV. 5	DATE 01/10/2011	BY 1000
REV. 6	DATE 01/10/2011	BY 1000
REV. 7	DATE 01/10/2011	BY 1000
REV. 8	DATE 01/10/2011	BY 1000
REV. 9	DATE 01/10/2011	BY 1000
REV. 10	DATE 01/10/2011	BY 1000
REV. 11	DATE 01/10/2011	BY 1000
REV. 12	DATE 01/10/2011	BY 1000
REV. 13	DATE 01/10/2011	BY 1000
REV. 14	DATE 01/10/2011	BY 1000
REV. 15	DATE 01/10/2011	BY 1000
REV. 16	DATE 01/10/2011	BY 1000
REV. 17	DATE 01/10/2011	BY 1000
REV. 18	DATE 01/10/2011	BY 1000
REV. 19	DATE 01/10/2011	BY 1000
REV. 20	DATE 01/10/2011	BY 1000