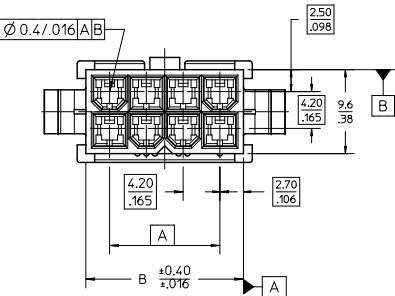
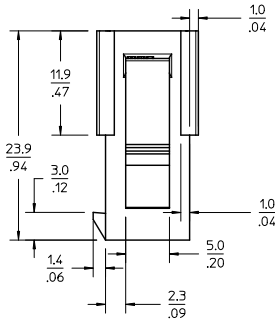
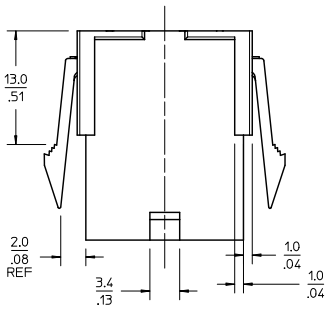
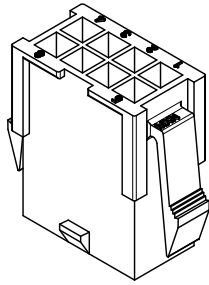
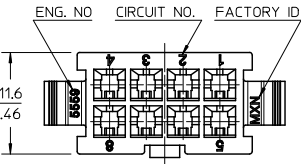
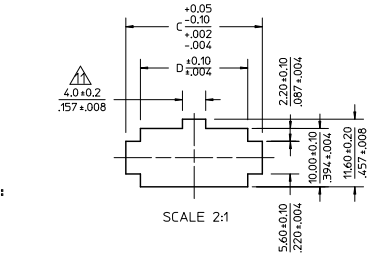
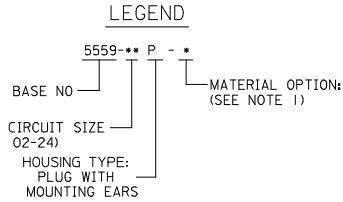


13 12 11 10 9 8 7 6 5 4 3 2 1



- NOTES:
- 1) MATERIAL:
    - \*BLANK\* = NYLON 6/6, 94V-2, COLOR: NATURAL.
    - \*BL\* = NYLON 6/6, 94V-2, COLOR: BLACK.
    - \*BU\* = NYLON 6/6, 94V-2, COLOR: BLUE.
    - \*RE\* = NYLON 6/6, 94V-2, COLOR: RED.
    - \*210\* = NYLON 6/6, 94V-0, COLOR: NATURAL.
  - 2) FINISH: NOT APPLICABLE
  - 3) PRODUCT SPECIFICATION: PS-5556-001
  - 4) PACKAGING: BULK
  - 5) PART MATES WITH MOLEX RECEPTACLE #5557.
  - 6) PART TO BE USED WITH MOLEX MALE TERMINAL #5558.
  - 7) PART IS NOT DESIGNED FOR CURRENT SHARING.
  - 8) CONNECTORS ARE NOT TO BE MATED OR UNMATED WHILE CIRCUITS ARE LIVE.
  - 9) WIRES ARE TO BE DRESSED IN SUCH A MANNER TO ALLOW THE TERMINALS TO FLOAT FREELY IN THE POCKET.
  - 10) PART CONFORMS TO CLASS 'B' REQUIREMENTS OF COSMETIC SPECIFICATION PS-45499-002 WITH THE EXCEPTION OF DISCOLORATION, FLASH AND SINK MEET CLASS 'C' REQUIREMENTS.
- RECOMMENDED PANEL HOLE DIMENSIONS**  
(THICKNESS : 0.8-2.0(.032-.079))



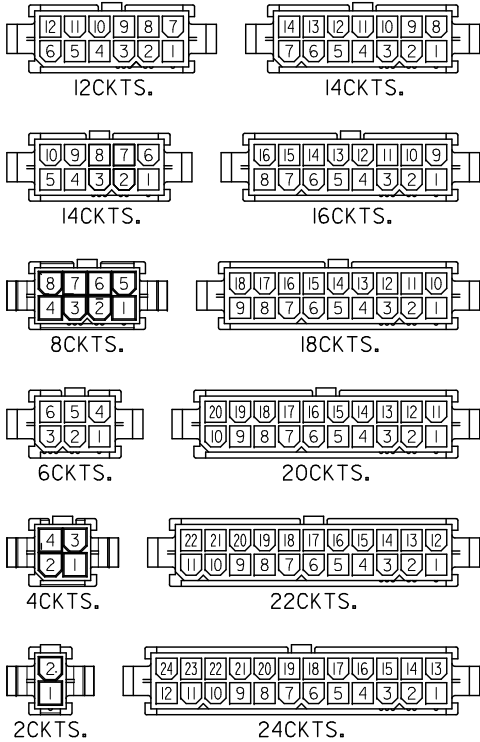
**RECOMMENDED PANEL HOLE DIMENSIONS**  
(THICKNESS : 0.8-2.0(.032-.079))

52.1/2.051	51.0/2.244	51.6/2.031	46.2/1.819	24
47.9/1.886	52.8/2.079	47.4/1.866	42.0/1.654	22
43.7/1.720	48.6/1.915	43.2/1.701	37.8/1.488	20
39.5/1.555	44.4/1.748	39.0/1.535	33.6/1.323	18
35.3/1.390	40.2/1.583	34.8/1.370	29.4/1.158	16
31.1/1.224	36.0/1.417	30.6/1.205	25.2/992	14
26.8/1.055	31.8/1.252	26.4/1.039	21.0/827	12
22.6/890	27.6/1.087	22.2/874	16.8/661	10
18.4/724	23.4/921	18.0/709	12.6/496	8
14.2/559	19.2/756	13.8/543	8.4/331	6
10.0/394	15.0/591	9.6/378	4.2/165	4
5.8/228	10.8/425	5.4/213	—	2

<p><b>REMOVED -04P-RE</b></p> <p>EC NO: UCP200-2477</p> <p>DRWN: JAGUILAR 2010/04/09</p> <p>CHKD: BELL 2010/08/26</p> <p>APPR: SMITH 2010/08/27</p>	<p>QUALITY SYMBOLS</p> <p>▽=0</p> <p>▽=0</p> <p>▽=0</p>	<p>GENERAL TOLERANCES (UNLESS SPECIFIED):</p> <table border="1"> <tr> <th></th> <th>mm</th> <th>INCH</th> </tr> <tr> <td>4 PLACES</td> <td>±.005</td> <td>±.0002</td> </tr> <tr> <td>3 PLACES</td> <td>±.012</td> <td>±.0005</td> </tr> <tr> <td>2 PLACES</td> <td>±.030</td> <td>±.0012</td> </tr> <tr> <td>1 PLACE</td> <td>±.40</td> <td>±.0157</td> </tr> <tr> <td colspan="3">ANGULAR ± 3°</td> </tr> </table>		mm	INCH	4 PLACES	±.005	±.0002	3 PLACES	±.012	±.0005	2 PLACES	±.030	±.0012	1 PLACE	±.40	±.0157	ANGULAR ± 3°			<p>DIMENSION STYLE</p> <p>MM/IN</p> <p>DRAWN BY: H. HIRAMOTO DATE: 1988/10/14</p> <p>CHECKED BY: DATE</p> <p>Y. YAMADA 1988/10/21</p> <p>APPROVED BY: DATE</p> <p>M. ENOMOTO 1988/10/24</p>	<p>SCALE: 3:1</p> <p>DESIGN UNITS: METRIC</p> <p>THIRD ANGLE PROJECTION</p>	<p><b>NEW MINI FIT CONNECTOR CRIMP PIN HOUSING</b></p>
			mm	INCH																			
		4 PLACES	±.005	±.0002																			
		3 PLACES	±.012	±.0005																			
2 PLACES	±.030	±.0012																					
1 PLACE	±.40	±.0157																					
ANGULAR ± 3°																							
<p>DRAFT WHERE APPLICABLE MUST REMAIN WITHIN DIMENSIONS</p>		<p>SEE CHART</p>	<p><b>MOLEX INCORPORATED</b></p>		<p>SHEET NO. 1 OF 2</p>																		
<p>THIS DRAWING CONTAINS INFORMATION THAT IS PROPRIETARY TO MOLEX INCORPORATED AND SHOULD NOT BE USED WITHOUT WRITTEN PERMISSION</p>		<p>SD-5559-NP</p>		<p>DOCUMENT NO.</p>																			
<p>REV</p>		<p>SIZE</p>		<p>DESCRIPTION</p>																			

12 11 10 9 8 7 6 5 4 3 2 1

13 12 11 10 9 8 7 6 5 4 3 2 1



CIRCUIT SIZE LAYOUT (SCALE : 2-1)

V-2 BLACK	
	24
	22
	20
	18
	16
	14
	12
	10
	8
	6
	4
	2
39-02-80655569-06P-BL	6
39-02-80455569-04P-BL	4
	2
EDP NO.	ENG. NO.

V-2 BLUE		V-2 RED		V-0 NATURAL		V-2 NATURAL				
	24		24	39-01-2246	5559-24P-210	24	39-01-2241	5559-24P	24	
	22		22	-2226	-22P-210	22	-2221	-22P	22	
	20		20	-2206	-20P-210	20	-2201	-20P	20	
	18		18	-2186	-18P-210	18	-2181	-18P	18	
	16		16	-2166	-16P-210	16	-2161	-16P	16	
	14		14	-2146	-14P-210	14	-2141	-14P	14	
	12		12	-2126	-12P-210	12	-2121	-12P	12	
	10		10	-2106	-10P-210	10	-2101	-10P	10	
	8		8	-2086	-08P-210	8	-2081	-08P	8	
	6	39-02-8067	5559-06P-RE	6	-06P-210	6	-2061	-06P	6	
	4			4	-04P-210	4	-2041	-04P	4	
	2			2	39-01-2026	5559-02P-210	2	39-01-2021	5559-02P	2
EDP NO.	ENG. NO.	CIRCUIT	EDP NO.	ENG. NO.	CIRCUIT	EDP NO.	ENG. NO.	CIRCUIT	EDP NO.	ENG. NO.

<b>SEE SHEET 1</b> EC NO. UCF2010-2477 DRAWN: JAGUILAR 2010/04/09 CHKD: BELL 2010/08/26 APPR: SMITH 2010/08/27	QUALITY SYMBOLS	GENERAL TOLERANCES (UNLESS SPECIFIED)	DIMENSION STYLE	SCALE	DESIGN UNITS	THIRD ANGLE PROJECTION
	▽=0	mm INCH	MM/IN	2:1	METRIC	☉
	▽=0	4 PLACES ±.005 ±.005	DRAWN BY H. HIRAMOTO DATE 1988/10/14	TITLE NEW MINI. FIT CONNECTOR CRIMP PIN HOUSING		
	▽=0	3 PLACES ±.012	CHECKED BY Y. YAMADA DATE 1988/10/21	MOLEX INCORPORATED		
▽=0	2 PLACES ±.016	APPROVED BY M. ENOMOTO DATE 1988/10/24	MATERIAL NO.	DOCUMENT NO.	SHEET NO. 2 OF 2	
	1 PLACE ±.040	ANGULAR ± 3°	DRAFT WHERE APPLICABLE MUST REMAIN WITHIN DIMENSIONS		SEE CHART SD-5559-NP	
			THIS DRAWING CONTAINS INFORMATION THAT IS PROPRIETARY TO MOLEX INCORPORATED AND SHOULD NOT BE USED WITHOUT WRITTEN PERMISSION			