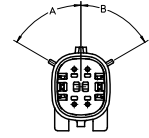
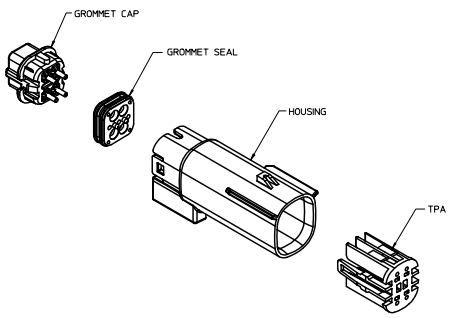
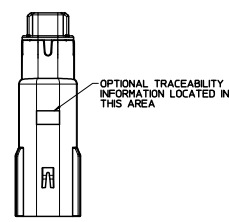


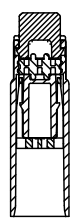
20 19 18 17 16 15 14 13 12 11 10 9 8 7 6 5 4 3 2 1



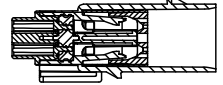
KEYING OPTION  
SEE TABLE  
SCALE 2:1



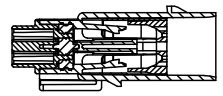
OPTIONAL TRACEABILITY  
INFORMATION LOCATED IN  
THIS AREA



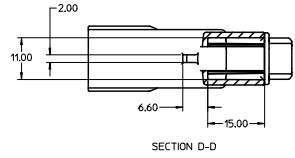
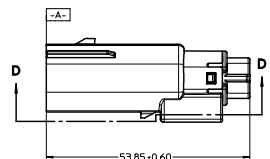
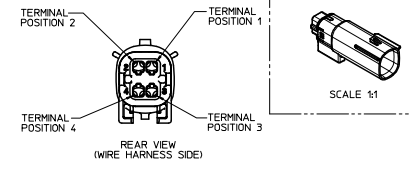
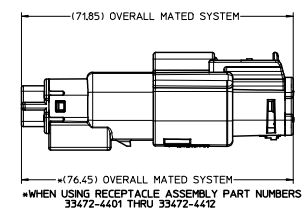
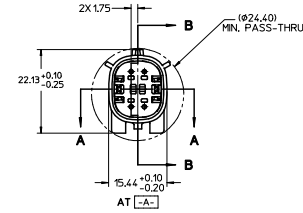
SECTION A-A



SECTION B-B  
(BLADE INSERT SHOWN IN FULL-LOCK POSITION)  
SEE NOTE 2



SECTION B-B  
(BLADE INSERT SHOWN IN PRE-LOCK POSITION)  
SEE NOTE 2



SECTION D-D

- NOTES: UNLESS OTHERWISE SPECIFIED
- DESIGNED TO MATE WITH RECEPTACLE HOUSING ASSEMBLY SPECIFIED IN MOLEX CHARTED DRAWING SD-33472-041.
  - ASSEMBLY SHIPPED WITH BLADE INSERT IN PRE-LOCK POSITION (SEE SECTION C-C "PRE-LOCK"). UPON FULL TERMINAL ASSEMBLY, EACH BLADE INSERT MUST BE SNAPPED INTO ITS FINAL-LOCK POSITION.
  - FOR BLADE TERMINALS TO BE USED WITH THIS ASSEMBLY, SEE DRAWING SD-33000-001.
  - SYSTEM TO BE USED WITH WIRE WITHIN DIAMETER RANGE OF 1.5mm TO 2.5mm.
  - MATERIAL: SPS/NYLON BLEND, 20% GLASS FILLED.
  - CHENGDU ASSEMBLIES SHALL CONFORM TO PACKAGING SPECIFICATION PK-31900-635
  - SHALL CONFORM TO PRODUCT SPECIFICATION PS-33472-000.
  - ASSEMBLY CONFORMS TO SAE/USCAR-2 REV 4 WITH THE FOLLOWING EXCEPTIONS: TERMINAL INSERTION FORCE FOR WIRE SIZE ABOVE 2.5mm NOT EXCEEDING 2.69mm SHALL NOT EXCEED 45 NEWTONS.
  - REFER TO SHEET #2 FOR ALL PART NUMBER OPTIONS

DRAWN BY: M CHECKED BY: M APPROVED BY: M DATE: 2006/06/08 DATE: 2006/06/08 DATE: 2006/06/07	QUALITY SYMBOLS	GENERAL TOLERANCES (UNLESS SPECIFIED)		DIMENSION STYLE	SCALE	DESIGN UNITS	THIRD ANGLE PROJECTION
	$\nabla=0$ $\nabla=0$	4 PLACES ±---	±---	MM ONLY	2:1	METRIC	
		3 PLACES ±---	±---				
		2 PLACES ±0.10	±---				
	1 PLACE ±0.3	±---					
	ANGULAR ± 3°						
DRAFT WHERE APPLICABLE MUST REMAIN WITHIN DIMENSIONS		SEE TABLE		DOCUMENT NO. SD-33482-041		SHEET NO. 1 OF 2	
THIS DRAWING CONTAINS INFORMATION THAT IS PROPRIETARY TO MOLEX INCORPORATED AND SHOULD NOT BE USED WITHOUT WRITTEN PERMISSION							

19 18 17 16 15 14 13 12 11 10 9 8 7 6 5 4 3 2 1

ASSEMBLY PART NUMBER	COLOR	KEYING OPTION	DIMENSIONS (DEGREES)		CAVITY TYPE & STATUS (X = PLUGGED)				STATUS	COMMENTS
			A	B	1	2	3	4		
33482-0401	BLACK	A	60	60					SALEABLE	RECOMMENDED, TEMPERATURE CLASS 4 (-40°C TO 150°C)
33482-0402	LIGHT GRAY	B	40	60					SALEABLE	RECOMMENDED, TEMPERATURE CLASS 4 (-40°C TO 150°C)
33482-0403	BROWN	C	60	40					DESIGN CONCEPT	NOT RECOMMENDED, USE 33482-4403, SAME KEY IN DIFFERENT COLOR
33482-0404	GREEN	D	40	40					DESIGN CONCEPT	NOT RECOMMENDED, USE 33482-4404, SAME KEY IN DIFFERENT COLOR
33482-0406	BLACK	A	60	60		X			SALEABLE	RECOMMENDED, TEMPERATURE CLASS 4 (-40°C TO 150°C)
33482-0407	LIGHT GRAY	B	40	60		X			SALEABLE	RECOMMENDED, TEMPERATURE CLASS 4 (-40°C TO 150°C)
33482-0408	BROWN	C	60	40		X			DESIGN CONCEPT	NOT RECOMMENDED, USE 33482-4409, SAME KEY IN DIFFERENT COLOR
33482-0409	GREEN	D	40	40		X			DESIGN CONCEPT	NOT RECOMMENDED, USE 33482-4408, SAME KEY IN DIFFERENT COLOR
33482-0411	BLACK	A	60	60		X	X		SALEABLE	RECOMMENDED, TEMPERATURE CLASS 4 (-40°C TO 150°C)
33482-0412	LIGHT GRAY	B	40	60		X	X		SALEABLE	RECOMMENDED, TEMPERATURE CLASS 4 (-40°C TO 150°C)
33482-0413	BROWN	C	60	40		X	X		DESIGN CONCEPT	NOT RECOMMENDED, USE 33482-4407, SAME KEY IN DIFFERENT COLOR
33482-0414	GREEN	D	40	40		X	X		DESIGN CONCEPT	NOT RECOMMENDED, USE 33482-4408, SAME KEY IN DIFFERENT COLOR
33482-0416	BLACK	A	60	60	X	X	X	X	SALEABLE	RECOMMENDED, TEMPERATURE CLASS 4 (-40°C TO 150°C)
33482-0417	LIGHT GRAY	B	40	60	X	X	X	X	SALEABLE	RECOMMENDED, TEMPERATURE CLASS 4 (-40°C TO 150°C)
33482-0418	BROWN	C	60	40	X	X	X	X	DESIGN CONCEPT	NOT RECOMMENDED, USE 33482-4409, SAME KEY IN DIFFERENT COLOR
33482-0419	GREEN	D	40	40	X	X	X	X	DESIGN CONCEPT	NOT RECOMMENDED, USE 33482-4410, SAME KEY IN DIFFERENT COLOR
33482-0421	BLACK	A	60	60	X	X	X		SALEABLE	RECOMMENDED, TEMPERATURE CLASS 4 (-40°C TO 150°C)
33482-0422	BLACK	A	60	60			X	X	SALEABLE	RECOMMENDED, TEMPERATURE CLASS 4 (-40°C TO 150°C)
33482-0423	BLACK	A	60	60			X	X	SALEABLE	RECOMMENDED, TEMPERATURE CLASS 4 (-40°C TO 150°C)
33482-0424	BLACK	A	60	60			X	X	SALEABLE	RECOMMENDED, TEMPERATURE CLASS 4 (-40°C TO 150°C)
33482-0425	BLACK	A	60	60	X	X			SALEABLE	RECOMMENDED, TEMPERATURE CLASS 4 (-40°C TO 150°C)
33482-4403	DARK GRAY	C	60	40					SALEABLE	RECOMMENDED, TEMPERATURE CLASS 4 (-40°C TO 150°C)
33482-4404	STONE GRAY	D	40	40					SALEABLE	RECOMMENDED, TEMPERATURE CLASS 4 (-40°C TO 150°C)
33482-4405	DARK GRAY	C	60	40		X			SALEABLE	RECOMMENDED, TEMPERATURE CLASS 4 (-40°C TO 150°C)
33482-4406	STONE GRAY	D	40	40		X			SALEABLE	RECOMMENDED, TEMPERATURE CLASS 4 (-40°C TO 150°C)
33482-4407	DARK GRAY	C	60	40		X	X		SALEABLE	RECOMMENDED, TEMPERATURE CLASS 4 (-40°C TO 150°C)
33482-4408	STONE GRAY	D	40	40		X	X		SALEABLE	RECOMMENDED, TEMPERATURE CLASS 4 (-40°C TO 150°C)
33482-4409	DARK GRAY	C	60	40	X	X	X	X	SALEABLE	RECOMMENDED, TEMPERATURE CLASS 4 (-40°C TO 150°C)
33482-4410	STONE GRAY	D	40	40	X	X	X	X	SALEABLE	RECOMMENDED, TEMPERATURE CLASS 4 (-40°C TO 150°C)

<b>ENTER DESCRIPTION</b> EN LES LANGUES M CHANGEMENTS 2006/06/04 APPROUVÉ PAR 2006/06/04 APPROUVÉ PAR 2006/06/04	<b>QUALITY SYMBOLS</b> ◻=0 ◻=0	<b>GENERAL TOLERANCES (UNLESS SPECIFIED)</b> <table border="1"> <tr><th></th><th>mm</th><th>INCH</th></tr> <tr><td>4 PLACES ±</td><td>±.005</td><td>±.0005</td></tr> <tr><td>3 PLACES ±</td><td>±.005</td><td>±.0005</td></tr> <tr><td>2 PLACES ±</td><td>±.010</td><td>±.0005</td></tr> <tr><td>1 PLACE ±</td><td>±.030</td><td>±.0005</td></tr> </table> ANGULAR ± 3°		mm	INCH	4 PLACES ±	±.005	±.0005	3 PLACES ±	±.005	±.0005	2 PLACES ±	±.010	±.0005	1 PLACE ±	±.030	±.0005	<b>DIMENSION STYLE</b> HM ONLY	<b>SCALE</b> 2:1	<b>DESIGN UNITS</b> METRIC	<b>THIRD ANGLE PROJECTION</b>
		mm	INCH																		
	4 PLACES ±	±.005	±.0005																		
	3 PLACES ±	±.005	±.0005																		
2 PLACES ±	±.010	±.0005																			
1 PLACE ±	±.030	±.0005																			
<b>DRAWN BY</b> MANSAMBROU	<b>DATE</b> 04-27-06	<b>CHECKED BY</b> DGR IFFIHS	<b>DATE</b> 06-22-06	<b>TITLE</b> MX150 BLADE CONNECTOR ASSEMBLY 2 ROW SEALED 4 WAY																	
<b>APPROVED BY</b> SMARCEAU	<b>DATE</b> 06-22-06	<b>MOLEX INCORPORATED</b>			<b>PAPER NO.</b> SD-33482-041	<b>SHEET NO.</b> 2 OF 2															
<b>DRAFT WHERE APPLICABLE MUST REMAIN WITHIN DIMENSIONS</b>							<b>THIS DRAWING CONTAINS INFORMATION THAT IS PROPRIETARY TO MOLEX INCORPORATED AND SHOULD NOT BE USED WITHOUT WRITTEN PERMISSION</b>														