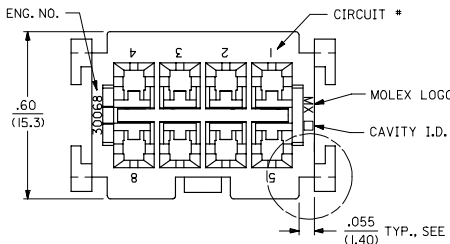
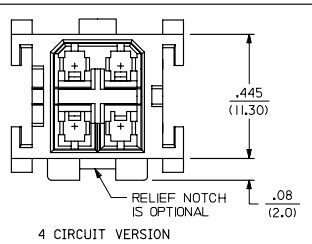
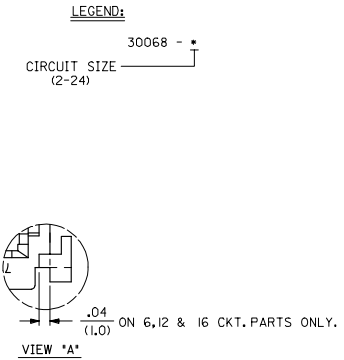
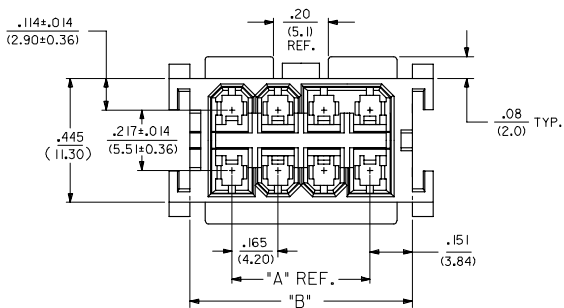
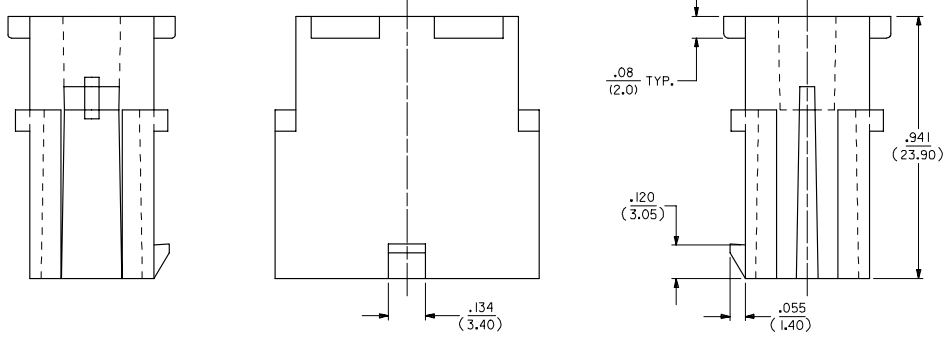


CKT. SIZE	ENG. NO.	EDP. NO.	DIM. "A" REF.	DIM. "B"
2	30068-2	I5-97-6021	----	.467 (11.86)
4	30068-4	I5-97-6041	.165 (4.20)	.467 (11.86)
6	30068-6	I5-97-6061	.331 (8.40)	.633 (16.08)
8	30068-8	I5-97-6081	.496 (12.60)	.798 (20.27)
10	30068-10	I5-97-6101	.661 (16.80)	.963 (24.46)
14	30068-14	NOT TOOLED	.992 (25.20)	1.294 (32.87)
16	30068-16	I5-97-6161	1.157 (29.40)	1.459 (37.06)

SEE SHT. 2 FOR 18 THRU 24 CKT'S.



- NOTES:
1. MATERIAL: UNFILLED POLYESTER, U.L. 94V-0, COLOR: BLACK
 2. FINISH: N/A
 3. PRODUCT SPECIFICATION: PS-5556-003
 4. PACKAGING: BULK
 5. HOUSING TO BE USED WITH TERMINAL #5558.
 6. HOUSING MATES WITH RECEPTACLE #30067
 7. 2 THRU 10 AND 14 THRU 24 CKT. HOUSING TO BE USED WITH T.P.A. NO. 30072-*, 12 CKT HOUSING TO BE USED WITH T.P.A. NO. 43568-12*. REFER TO DRAWING SDMS-30068-1* FOR ADDITIONAL INFORMATION.
 8. PART CONFORMS TO CLASS 'B' REQUIREMENTS OF COSMETIC SPECIFICATION PS-4599-002.

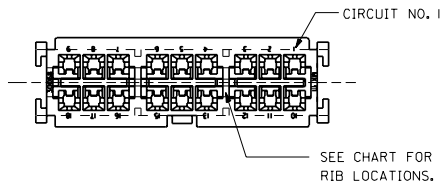


SEE SHT. #3 FOR PARTS WITH MOUNTING EARS

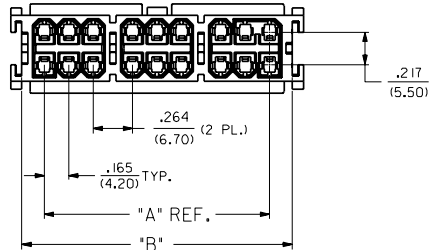
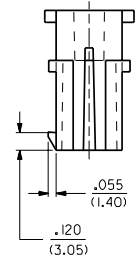
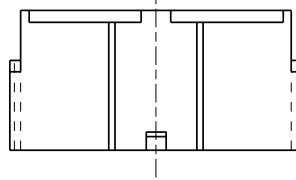
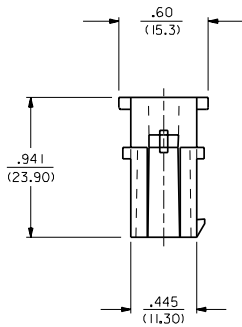
UPDATE 4 CKT VIEW EC NO. UCP2007-1573 DRW:LSCHMIDT 2008/12/28 CHK:RADER 2007/01/09 APP:FSM/TH 2007/01/09	QUALITY SYMBOLS ▽=0 ▽=0	GENERAL TOLERANCES (UNLESS SPECIFIED)		DIMENSION STYLE IN/MM	SCALE 4:1	DESIGN UNITS METRIC	THIRD ANGLE PROJECTION
		4 PLACES ± --- ± --- 3 PLACES ± --- ± .010 2 PLACES ± 0.25 ± .014 1 PLACE ± 0.36 ± --- ANGULAR ±1/2°	DRAWN BY DMF DATE 1989/10/26	CHECKED BY TGP DATE 1989/10/26	APPROVED BY SC DATE 1989/10/26	MATERIAL NO. SEE CHART	DOCUMENT NO. SD-30068-*
DRAFT WHERE APPLICABLE MUST REMAIN WITHIN DIMENSIONS							
THIS DRAWING CONTAINS INFORMATION THAT IS PROPRIETARY TO MOLEX INCORPORATED AND SHOULD NOT BE USED WITHOUT WRITTEN PERMISSION							

3	A
2	P1
1	R2
SHEET REV	

CKT. NO.	ENG. NO.	PART NO.	DIM. "A"	DIM. "B"	RIBS LOCATED BETWEEN CKT'S.
18	30068-18	NOT TOOLED	1.520 (38.60)	1.822 (46.28)	3, 4 & 6, 7
20	30068-20	NOT TOOLED	1.685 (42.80)	1.987 (50.46)	3, 4 & 7, 8
22	30068-22	NOT TOOLED	1.850 (47.00)	2.152 (54.66)	4, 5 & 7, 8
24	30068-24	NOT TOOLED	2.016 (51.20)	2.318 (58.88)	4, 5 & 8, 9
SEE SHT. 1 FOR 2 THRU 16 CKT'S.					



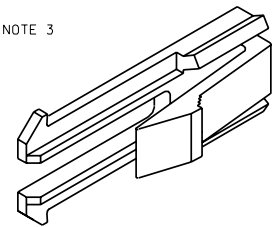
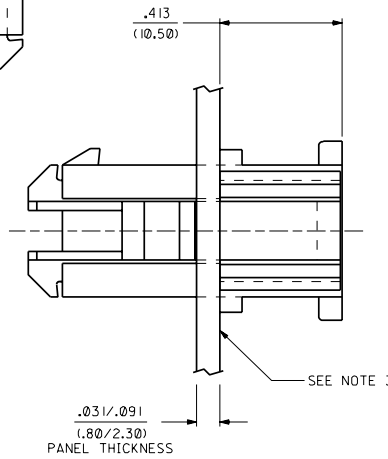
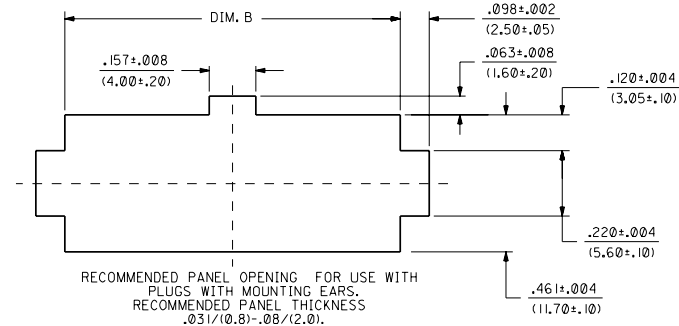
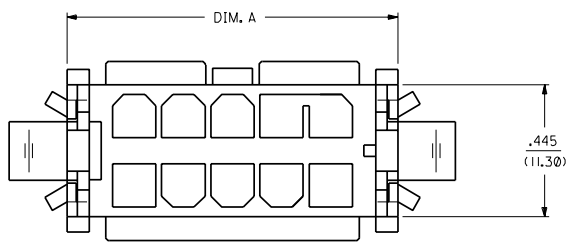
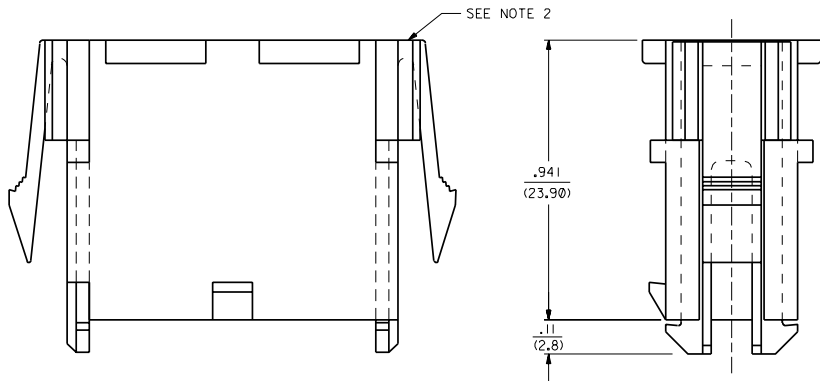
LEGEND:
30068 - *
CIRCUIT SIZE (18-24)



REVISIONS		REVISIONS		DIMENSIONS SHOWN: METRIC INCH		TOLERANCES: ANGULAR 1/2°		REVISE ONLY ON CAD SYSTEM	
LTR.		LTR.		UNLESS OTHERWISE SPECIFIED	INCH	METRIC	±0	±0	
				3 PLACE ± .010	---	---			
				2 PLACE ± .014	±0.25				
				1 PLACE ---	±0.36				
				DRAFT WHERE APPLICABLE MUST REMAIN WITHIN DIMENSIONS					
				DRWG. BY: CEP	CHK'D. BY: R.J.F.				
				APP'D. RAS	SCALE: 2:1				

MOLEX INCORPORATED
 SEE CHART
 SD-30068-*

13 12 11 10 9 8 7 6 30068 4 3 2 1



NOTES:

- 1) MOUNTING EAR MATERIAL: UNFILLED POLYESTER, P.B.T., COLOR: BLACK.
- 2) MOUNTING EARS TO BE INSERTED INTO SIDE SLOTS FROM BACK OF HOUSING.
- 3) HOUSING ASSEMBLY TO BE INSERTED FROM PUNCH SIDE OF PANEL.
- 4) REFER TO DRAWING SDMS-30068-2* FOR TPA & MOUNTING EAR KIT INFORMATION

NUMBER OF CIRCUITS	DIM. A	DIM. B
2	.617 (15.67)	.634 (16.10)
4	.617 (15.67)	.634 (16.10)
6	.783 (19.89)	.799 (20.30)
8	.948 (24.08)	.965 (24.50)
10	1.113 (28.27)	1.130 (28.70)
12	1.279 (32.49)	1.295 (32.90)
14	1.444 (36.68)	1.461 (37.10)
16	1.609 (40.87)	1.626 (41.30)
18	1.972 (50.09)	1.988 (50.50)
20	2.137 (54.28)	2.154 (54.70)
22	2.303 (58.50)	2.319 (58.90)
24	2.468 (62.69)	2.484 (63.10)

DIMENSIONS SHOWN METRIC INCH		REVISIONS																			
UNLESS OTHERWISE SPECIFIED TOLERANCES ANGULAR ± 1/2°		LTR. REVISIONS LTR. REVISIONS																			
<table border="1"> <thead> <tr> <th></th> <th>INCH</th> <th>METRIC</th> </tr> </thead> <tbody> <tr> <td>3 PLACE</td> <td>± .010</td> <td>---</td> </tr> <tr> <td>2 PLACE</td> <td>± .015</td> <td>+0.25</td> </tr> <tr> <td>1 PLACE</td> <td>---</td> <td>± 0.38</td> </tr> </tbody> </table>			INCH	METRIC	3 PLACE	± .010	---	2 PLACE	± .015	+0.25	1 PLACE	---	± 0.38	<table border="1"> <tr> <td>DATE</td> <td>99/04/22</td> </tr> <tr> <td>SHEET NO.</td> <td>3</td> </tr> <tr> <td>U.S.A.</td> <td></td> </tr> </table>		DATE	99/04/22	SHEET NO.	3	U.S.A.	
	INCH	METRIC																			
3 PLACE	± .010	---																			
2 PLACE	± .015	+0.25																			
1 PLACE	---	± 0.38																			
DATE	99/04/22																				
SHEET NO.	3																				
U.S.A.																					
<p>MOLEX INCORPORATED</p> <p>SEE CHART SD-30068-*</p>		<p>THIS DRAWING CONTAINS INFORMATION THAT IS PROPRIETARY TO MOLEX INC. AND SHOULD NOT BE USED WITHOUT WRITTEN PERMISSION.</p>																			

13 12 11 10 9 8 7 6 5 4 3 2 1