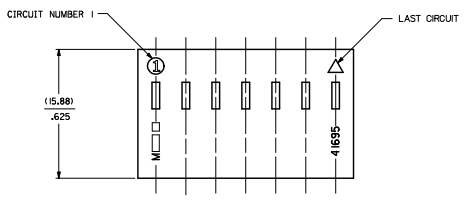
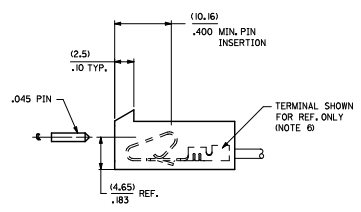
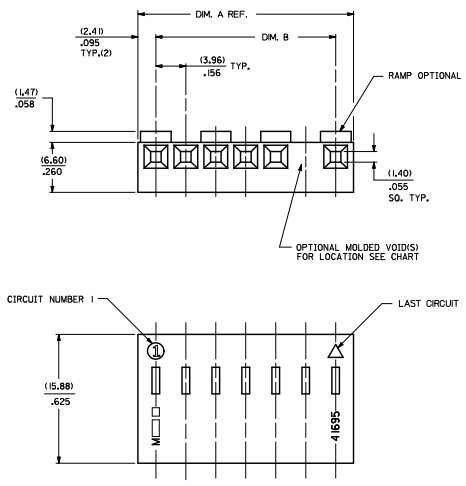


20 19 18 17 16 15 14 13 12 11 10 9 8 7 6 5 4 3 2 1



NO. OF CKTS SEE NOTE 10	DIM. A	DIM. B
1	NOT AVAILABLE	
2	(8.79) .348	(3.96±.05) .156±.002
3	(12.75) .502	(7.82±.08) .312±.003
4	(16.71) .665	(11.68±.08) .468±.003
5	(20.67) .814	(15.55±.08) .624±.003
6	(24.64) .970	(19.41±.10) .780±.004
7	(28.60) 1.126	(23.27±.10) .936±.004
8	(32.56) 1.282	(27.14±.10) 1.092±.004
9	(36.53) 1.438	(31.00±.10) 1.248±.004
10	(40.49) 1.594	(34.86±.10) 1.404±.006
11	(44.45) 1.750	(38.72±.15) 1.560±.006
12	(48.41) 1.906	(42.58±.15) 1.716±.006
13	(52.37) 2.062	(46.45±.15) 1.872±.006
14	(56.34) 2.218	(50.31±.15) 2.028±.007
15	(60.30) 2.374	(54.17±.18) 2.184±.007

41695 - \* - \* N - ##

MATERIAL CODE  
N=MOLDED NATURAL  
G=GLOW WIRE

CODE	RAMP	POLARIZING RES	PACKAGING
A	NO	NO	BULK PER PK-41695-001
B	YES	NO	BULK PER PK-41695-002
D	YES	YES	BULK PER PK-41695-003
G	END RAMP ONLY	YES	BULK PER PK-41695-003

VOID CODE  
BLANK=NO VOIDS  
NO. NO. CORRESPONDS TO CKT. NO. VOIDED  
MULT. VOIDS=START WITH 51

NO. OF CKTS.  
SEE NOTE 10

- NOTES:
- MATERIAL: N - GLASS FILLED POLYESTER, UL94V-0, MOLDED NATURAL  
G - UL94V-0 PA6 NYLON, IEC 60335-1, 4th EDITION GLOW WIRE CAPABLE.  
COLOR: BLACK
  - FINISH: SEE TERMINAL DRAWINGS
  - PRODUCT SPECIFICATION: PS-08-50 AND PS-40-02
  - PACKAGING INFORMATION: SEE LEGEND
  - MATES WITH (3.96)/.156 CENTER HEADERS AND (1.41)/.045 SQUARE OR ROUND PINS
  - HOUSING ACCEPTS STANDARD TERMINAL NOS.:  
2478 (18-24 AWG) WITH (2.79)/.110 MAX. INSULATION DIA.  
2578 (22-26 AWG) WITH (1.65)/.065 MAX. INSULATION DIA.  
OR TRIFURCON TERMINAL NOS.:  
6438 (18-22 AWG) WITH (2.79)/.110 MAX. INSULATION DIA.  
6838 (18-24 AWG) WITH (2.79)/.110 MAX. INSULATION DIA.  
7258 (22-26 AWG) WITH (1.65)/.065 MAX. INSULATION DIA.
  - BOW (.006 MM/MIL) / .005 IN/AN
  - (0.13)/.005 MAX. FLASH ALLOWED ALONG DIMENSION B AND IN LOCKING WINDOW.
  - THIS PART CONFORMS TO CLASS B REQUIREMENTS OF COSMETIC SPECIFICATION PS-5499-002.
  - CIRCUIT SIZES 13 THROUGH 15 ARE NOT AVAILABLE IN G MATERIAL.

ADV/DES/ETC/PNS EUC/OPC/PLC/PLP H/CHK/GRN/APP/PRF/STH 2011/01/08 2011/01/10 2011/01/23	QUALITY SYMBOLS	GENERAL TOLERANCES (UNLESS SPECIFIED)	DIMENSION STYLE	SCALE	DESIGN UNITS	THIRD ANGLE PROJECTION	
	▽=0 ▽=0 ▽=0	4 PLACES ±.--- INCH 3 PLACES ±.--- ±.010 2 PLACES ±.025 ±.014 1 PLACE ±.0.36 ±.--- ANGULAR ±1/2°	MM/IN DRAWN BY SKOWRONSKI CHECKED BY PATEL APPROVED BY LENZ DATE 04/05/86 DATE 04/05/86 DATE 04/05/86	MM/IN	4:1	INCH	
		DRAFT WHERE APPLICABLE MUST REMAIN WITHIN DIMENSIONS	MATERIAL NO. SEE CHART DOCUMENT NO. SD-41695				(3.96)/.156 CENTERLINE CONNECTOR HOUSING FOR KK CRIMP TERMINALS MOLEX INCORPORATED
							SHEET NO. 1 OF 3 THIS DRAWING CONTAINS INFORMATION THAT IS PROPRIETARY TO MOLEX INCORPORATED AND SHOULD NOT BE USED WITHOUT WRITTEN PERMISSION

3 H  
2 H  
1 H  
BHT/REV

