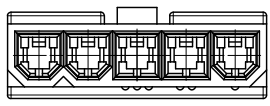
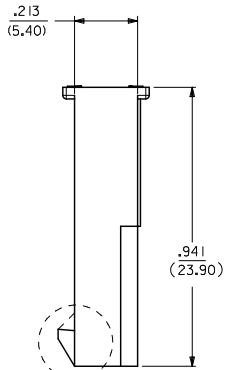
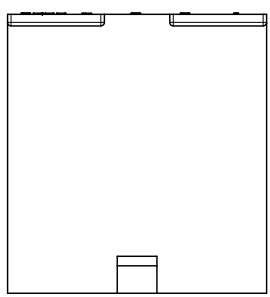
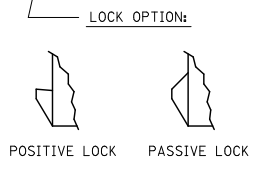


CKT SIZE	DIM A	DIM B	DIM C	DIM D
4	.496 (12.60)	.709 (18.00)	.724 (18.40)	.921 (23.40)
5	.661 (16.80)	.874 (22.20)	.890 (22.60)	1.087 (27.60)
6	.827 (21.00)	1.039 (26.40)	1.055 (26.80)	1.252 (31.80)
7	.992 (25.20)	1.205 (30.60)	1.220 (31.00)	1.417 (36.00)
8	1.157 (29.40)	1.370 (34.80)	1.386 (35.20)	1.583 (40.20)
9	1.323 (33.60)	1.535 (39.00)	1.551 (39.40)	1.748 (44.40)
10	1.488 (37.80)	1.701 (43.20)	1.717 (43.60)	1.913 (48.60)
11	1.654 (42.00)	1.866 (47.40)	1.882 (47.80)	2.079 (52.80)
12	1.819 (46.20)	2.031 (51.60)	2.047 (52.00)	2.244 (57.00)



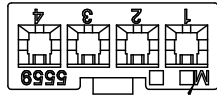
5 CKT WITHOUT MOUNTING EARS SHOWN



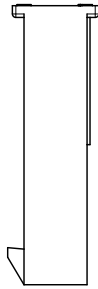
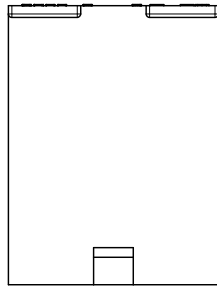
- NOTES:
1. MATERIAL: BLANK-NYLON 6/6, UL 94V-2, COLOR: NATURAL.
210-NYLON 6/6, UL 94V-0, COLOR: NATURAL.
400-NYLON 6/6, UL 94 V-0, COLOR: BLACK.
 2. FINISH: NOTE APPLICABLE
 3. PRODUCT SPECIFICATION: PS-5556-001
 4. PACKAGING SPECIFICATION: BULK PER PK-5559-003
 5. THIS PART MATES WITH RECEPTACLE NO. 5557.
 6. THIS PART IS FOR USE WITH MOLEX MALE TERMINAL NO. 5558-*
 7. PANEL MOUNT VERSION IS FOR USE WITH .031/.079/(0.80/2.00) THICK PANELS
 8. PANEL SHOULD BE PUNCHED IN THE DIRECTION OF CONNECTOR INSERTION.
 9. FACTORY ID MAY BE LOCATED ON EARS.
 10. THIS PART CONFORMS TO CLASS B REQUIREMENTS OF COSMETIC SPECIFICATION PS-45499-002.
 11. PART IS NOT DESIGNED FOR CURRENT SHARING.
 12. PARTS ARE NOT TO BE MATED OR UNMATED WHILE CIRCUITS ARE LIVE.
 13. WIRES ARE TO BE DRESSED IN SUCH A MANNER TO ALLOW THE TERMINALS TO FLOAT FREELY IN THE POCKET.

ADD 4 CKT POLZ. EC NO. LEP2011-2714 DRAWN: JAGUILAR 2011/03/09 CHECKED: BELL 2011/03/09 APPR: F SMITH 2011/03/10	QUALITY SYMBOLS ∇=0 ∇=0 ∇=0	GENERAL TOLERANCES (UNLESS SPECIFIED)		DIMENSION STYLE IN/MM		SCALE 4:1	DESIGN UNITS METRIC	THIRD ANGLE PROJECTION	
		4 PLACES ± --- ± ---	mm	INCH	DRAWN BY KSS	DATE 2/19/89	TITLE MINI-FIT JR. SERIES PLUG (SINGLE ROW)		
		3 PLACES ± --- ± .010			CHECKED BY RJF	DATE 2/19/89	MOLEX INCORPORATED		
		2 PLACES ± 0.25 ± .015			APPROVED BY F SMITH	DATE 2011/03/10	DOCUMENT NO. SD-5559-NLP*		
		1 PLACE ± 0.38 ± ---						SHEET NO. 1 OF 3	
DRAFT WHERE APPLICABLE MUST REMAIN WITHIN DIMENSIONS		ANGULAR ± 1/2°		SEE CHART		THIS DRAWING CONTAINS INFORMATION THAT IS PROPRIETARY TO MOLEX INCORPORATED AND SHOULD NOT BE USED WITHOUT WRITTEN PERMISSION			

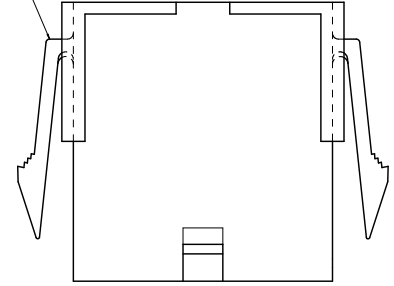
13 12 11 10 9 8 7 6 5 4 3 2 1



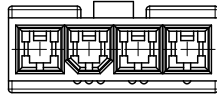
FACTORY ID
SEE NOTE 9



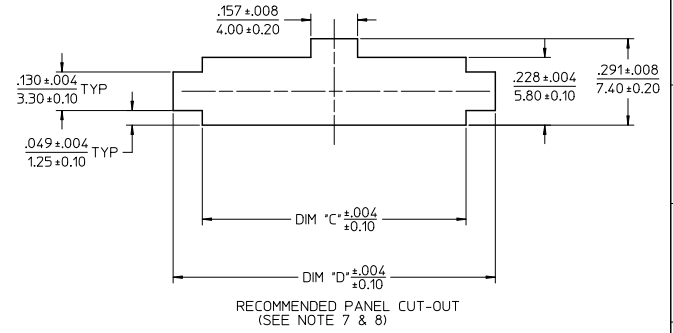
SEE NOTE 9



WITH MOUNTING EARS



4 CKT WITHOUT
MOUNTING EARS SHOWN



SEE SHEET 1 EC NO: UCP2011-2714 DRAWN: JAGUILAR 2011/03/09 CHKD: BELL 2011/03/09 APPR: SMITH 2011/03/10	QUALITY SYMBOLS ∇=0 ∇=0 ∇=0	GENERAL TOLERANCES (UNLESS SPECIFIED)		DIMENSION STYLE		SCALE	DESIGN UNITS	THIRD ANGLE PROJECTION
		mm	INCH	IN/MM		4:1	METRIC	
		4 PLACES ± .01	± .01	DRAWN BY	DATE	TITLE		
		3 PLACES ± .02	± .02	KSS	2/19/89	MINI-FIT JR. SERIES PLUG (SINGLE ROW)		
2 PLACES ± 0.25	± .015	CHECKED BY	DATE	MATERIAL NO.		DOCUMENT NO.	SHEET NO.	
1 PLACE ± 0.38	± .01	RJF	2/19/89	SD-5559-NLP*			2 OF 3	
ANGULAR ± 1/2°		APPROVED BY	DATE	THIS DRAWING CONTAINS INFORMATION THAT IS PROPRIETARY TO MOLEX INCORPORATED AND SHOULD NOT BE USED WITHOUT WRITTEN PERMISSION				
DRAFT WHERE APPLICABLE MUST REMAIN WITHIN DIMENSIONS		FSMITH	2011/03/10					

12 11 10 9 8 7 6 5 4 3 2 1

13		12		11		10		9		8		7		6		5		4		3		2		1	
TOOLED	PART NO	ENG NO		CKT SIZE	MOUNTING OPTION	LOCK OPTION	MATERIAL SEE NOTE 1		TOOLED	PART NO	ENG NO		CKT SIZE	MOUNTING OPTION	LOCK OPTION	MATERIAL SEE NOTE 1									
NO	39-01-4042	5559-04P2		4	W/EARS	POSITIVE	94V-2		NO	NO E.D.P.	5559-04P4		4	W/EARS	PASSIVE	94V-2									
YES	39-01-4046	5559-04P3		4	W/O EAR	POSITIVE	94V-2		NO	NO E.D.P.	5559-04P5		4	W/O EAR	PASSIVE	94V-2									
NO	39-01-4043	5559-04P2-210		4	W/EARS	POSITIVE	94V-0		NO	NO E.D.P.	5559-04P4-210		4	W/EARS	PASSIVE	94V-0									
YES	39-01-4047	5559-04P3-210		4	W/O EAR	POSITIVE	94V-0		NO	NO E.D.P.	5559-04P5-210		4	W/O EAR	PASSIVE	94V-0									
YES	39-01-4052	5559-05P2		5	W/EARS	POSITIVE	94V-2																		
YES	39-01-4056	5559-05P3		5	W/O EAR	POSITIVE	94V-2																		
YES	39-01-4053	5559-05P2-210		5	W/EARS	POSITIVE	94V-0		YES	50-29-1599	5559-05P4-210		5	W/EARS	PASSIVE	94V-0									
YES	39-01-4057	5559-05P3-210		5	W/O EAR	POSITIVE	94V-0		NO	NO E.D.P.	5559-05P5-210		5	W/O EAR	PASSIVE	94V-0									
YES	50-30-4446	5559-05P3-400		5	W/O EAR	POSITIVE	94V-0		NO	NO E.D.P.	5559-05P6-400		5	W/O EAR	PASSIVE	94V-0									
NO	39-01-4062	5559-06P2		6	W/EARS	POSITIVE	94V-2		NO	NO E.D.P.	5559-06P4		6	W/EARS	PASSIVE	94V-2									
NO	39-01-4066	5559-06P3		6	W/O EAR	POSITIVE	94V-2		NO	NO E.D.P.	5559-06P5		6	W/O EAR	PASSIVE	94V-2									
NO	39-01-4063	5559-06P2-210		6	W/EARS	POSITIVE	94V-0		NO	NO E.D.P.	5559-06P4-210		6	W/EARS	PASSIVE	94V-0									
NO	39-01-4067	5559-06P3-210		6	W/O EAR	POSITIVE	94V-0		NO	NO E.D.P.	5559-06P5-210		6	W/O EAR	PASSIVE	94V-0									
NO	39-01-4072	5559-07P2		7	W/EARS	POSITIVE	94V-2		NO	NO E.D.P.	5559-07P4		7	W/EARS	PASSIVE	94V-2									
NO	39-01-4076	5559-07P3		7	W/O EAR	POSITIVE	94V-2		NO	NO E.D.P.	5559-07P5		7	W/O EAR	PASSIVE	94V-2									
NO	39-01-4073	5559-07P2-210		7	W/EARS	POSITIVE	94V-0		NO	NO E.D.P.	5559-07P4-210		7	W/EARS	PASSIVE	94V-0									
NO	39-01-4077	5559-07P3-210		7	W/O EAR	POSITIVE	94V-0		NO	NO E.D.P.	5559-07P5-210		7	W/O EAR	PASSIVE	94V-0									
NO	39-01-4082	5559-08P2		8	W/EARS	POSITIVE	94V-2		NO	NO E.D.P.	5559-08P4		8	W/EARS	PASSIVE	94V-2									
NO	39-01-4086	5559-08P3		8	W/O EAR	POSITIVE	94V-2		NO	NO E.D.P.	5559-08P5		8	W/O EAR	PASSIVE	94V-2									
NO	39-01-4083	5559-08P2-210		8	W/EARS	POSITIVE	94V-0		NO	NO E.D.P.	5559-08P4-210		8	W/EARS	PASSIVE	94V-0									
NO	39-01-4087	5559-08P3-210		8	W/O EAR	POSITIVE	94V-0		NO	NO E.D.P.	5559-08P5-210		8	W/O EAR	PASSIVE	94V-0									
NO	39-01-4092	5559-09P2		9	W/EARS	POSITIVE	94V-2		NO	NO E.D.P.	5559-09P4		9	W/EARS	PASSIVE	94V-2									
NO	39-01-4096	5559-09P3		9	W/O EAR	POSITIVE	94V-2		NO	NO E.D.P.	5559-09P5		9	W/O EAR	PASSIVE	94V-2									
NO	39-01-4093	5559-09P2-210		9	W/EARS	POSITIVE	94V-0		NO	NO E.D.P.	5559-09P4-210		9	W/EARS	PASSIVE	94V-0									
NO	39-01-4097	5559-09P3-210		9	W/O EAR	POSITIVE	94V-0		NO	NO E.D.P.	5559-09P5-210		9	W/O EAR	PASSIVE	94V-0									
NO	39-01-4102	5559-10P2		10	W/EARS	POSITIVE	94V-2		NO	NO E.D.P.	5559-10P4		10	W/EARS	PASSIVE	94V-2									
NO	39-01-4106	5559-10P3		10	W/O EAR	POSITIVE	94V-2		NO	NO E.D.P.	5559-10P5		10	W/O EAR	PASSIVE	94V-2									
NO	39-01-4103	5559-10P2-210		10	W/EARS	POSITIVE	94V-0		NO	NO E.D.P.	5559-10P4-210		10	W/EARS	PASSIVE	94V-0									
NO	39-01-4107	5559-10P3-210		10	W/O EAR	POSITIVE	94V-0		NO	NO E.D.P.	5559-10P5-210		10	W/O EAR	PASSIVE	94V-0									
NO	39-01-4112	5559-11P2		11	W/EARS	POSITIVE	94V-2		NO	NO E.D.P.	5559-11P4		11	W/EARS	PASSIVE	94V-2									
NO	39-01-4116	5559-11P3		11	W/O EAR	POSITIVE	94V-2		NO	NO E.D.P.	5559-11P5		11	W/O EAR	PASSIVE	94V-2									
NO	39-01-4113	5559-11P2-210		11	W/EARS	POSITIVE	94V-0		NO	NO E.D.P.	5559-11P4-210		11	W/EARS	PASSIVE	94V-0									
NO	39-01-4117	5559-11P3-210		11	W/O EAR	POSITIVE	94V-0		NO	NO E.D.P.	5559-11P5-210		11	W/O EAR	PASSIVE	94V-0									
NO	39-01-4122	5559-12P2		12	W/EARS	POSITIVE	94V-2		NO	NO E.D.P.	5559-12P4		12	W/EARS	PASSIVE	94V-2									
NO	39-01-4126	5559-12P3		12	W/O EAR	POSITIVE	94V-2		NO	NO E.D.P.	5559-12P5		12	W/O EAR	PASSIVE	94V-2									
NO	39-01-4123	5559-12P2-210		12	W/EARS	POSITIVE	94V-0		NO	NO E.D.P.	5559-12P4-210		12	W/EARS	PASSIVE	94V-0									
NO	39-01-4127	5559-12P3-210		12	W/O EAR	POSITIVE	94V-0		NO	NO E.D.P.	5559-12P5-210		12	W/O EAR	PASSIVE	94V-0									

LEGEND

5559-***P***

BASE NO

CIRCUIT SIZE (04-12)

PLUG

MATERIAL OPTION: SEE NOTE 1

MOUNTING AND LOCK OPTION:
 2=WITH EARS, POSITIVE LOCK
 3=WITHOUT EARS, POSITIVE LOCK
 4=WITH EARS, PASSIVE LOCK
 5=WITHOUT EARS, PASSIVE LOCK

SEE SHEET 1 IEC NO: UCP201-2741 DRAWN: JAGUILAR 2011/03/09 CHKD: BELL 2011/03/09 APPR: SMITH 2011/03/10	QUALITY SYMBOLS	GENERAL TOLERANCES (UNLESS SPECIFIED)	DIMENSION STYLE IN/MM	SCALE 1:1	DESIGN UNITS METRIC	THIRD ANGLE PROJECTION
	▽=0	4 PLACES ±.005 ±.010	DRAWN BY KSS DATE 2/19/89	TITLE MINI-FIT JR. SERIES PLUG (SINGLE ROW)		
	▽=0	3 PLACES ±.010 ±.015	CHECKED BY RJF DATE 2/19/89			
	▽=0	2 PLACES ±.025 ±.038	APPROVED BY FSMITH DATE 2011/03/10	MOLEX INCORPORATED MATERIAL NO. SD-5559-NLP* DOCUMENT NO. SHEET NO. 3 OF 3		
▽=0	1 PLACE ±0.38 ±.005	ANGULAR ±1/2°				
DRAFT WHERE APPLICABLE MUST REMAIN WITHIN DIMENSIONS		THIS DRAWING CONTAINS INFORMATION THAT IS PROPRIETARY TO MOLEX INCORPORATED AND SHOULD NOT BE USED WITHOUT WRITTEN PERMISSION				