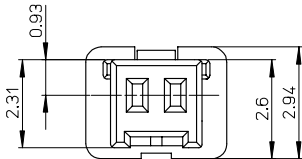
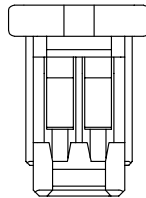
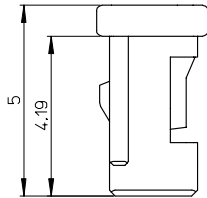
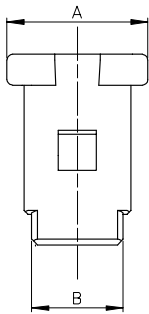
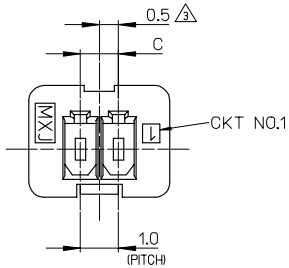


10 9 8 7 6 5 4 3 2 1



NOTES.

1. 適合ターミナル: 501334-\*\*\*\*  
APPLICABLE TERMINAL: 501334-\*\*\*\*
2. 嵌合相手: 501331-\*\*\*\*  
MATE WITH: 501331-\*\*\*\*
- △ 偶数極に適用  
APPLY FOR EVEN CIRCUIT SIZE
4. 6~15極は、SD-501330-002を参照下さい。  
REFER TO SD-501330-002 ABOUT 6-15CKT.

※対応可能な極数は、別途お問い合わせ下さい。

4.0	5.4	6.7	501330-0500	5	501330-***00
3.0	4.4	5.7	501330-0400	4	
2.0	3.4	4.7	501330-0300	3	
1.0	2.4	3.7	501330-0200	2	
C	B	A	MATERIAL NO.	CKT.	MODEL NO.

材料  
MATERIAL  
66ナイロン 色:白  
66NYLON COLOR:WHITE  
ガラス無充填  
GLASS FILLED: 0%  
UL94V-0

REVISED	DESCRIPTION
IEC NO. J2005-1980	2005/01/18
DRAWN NYOSHIDA	2005/01/19
CHKD MYAGI	2005/01/26
APPR. ANODA	2005/01/26

GENERAL TOLERANCES (UNLESS SPECIFIED)	
10 UNDER	±0.2
10 OVER 30 UNDER	±0.25
30 OVER	±0.3
ANGULAR	±3 °
DRAFT WHERE APPLICABLE MUST REMAIN WITHIN DIMENSIONS	

DIMENSION STYLE	
MM ONLY	
DRAWN BY	DATE
NYOSHIDA	2004/07/30
CHECKED BY	DATE
MYAGI	2004/07/30
APPROVED BY	DATE
MIYAZAWA	2004/07/30
MATERIAL NO.	
SEE CHART	

SCALE	DESIGN UNITS	THIRD ANGLE PROJECTION
10:1	METRIC	☉ □
TITLE		
1.0 WIRE TO BOARD CONN. 1-ROW RECEPTACLE HOUSING 2-5CKT.		
MOLEX INCORPORATED		
DOCUMENT NO.	SHEET NO.	
SD-501330-001	1 OF 1	