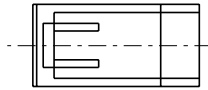
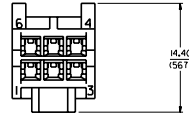
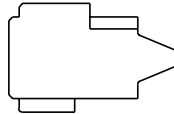
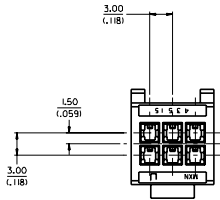
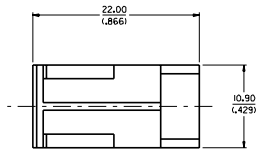


43515

NOTES:

1. MATERIAL: POLYESTER (PBT), UN-FILLED, UL 94V-0. COLOR: BLACK
2. FINISH: NONE
3. PRODUCT SPEC: P-43510-002.
4. ALL DIMENSIONS SHOWN FOR REFERENCE ONLY.
5. USES STANDARD 43031 MICRO-FIT MALE CRIMP TERMINALS.
6. MATES WITH 43512-0001 RECEPTACLE POD.
7. PART TO BE USED WITH 43839-0*** PLUG SHROUD. (SEE SHROUD DRAWING FOR ASSEMBLY INFORMATION)



REV. PICTORALLY EC NO. UCR899-0594 DRAWING DATE 9/10/06 APPROVED BY COMERCIAL DATE 9/10/06	QUALITY SYMBOLS MAJOR CRITICAL	GENERAL TOLERANCES: (UNLESS SPECIFIED)	SCALE 4:1	DESIGN UNITS mm <input type="checkbox"/> INCH <input type="checkbox"/>	THIRD ANGLE PROJECTION <input checked="" type="checkbox"/> THIRD ANGLE PROJECTION	DIMENSIONS: mm <input type="checkbox"/> INCH <input type="checkbox"/> mm <input type="checkbox"/> mm <input type="checkbox"/>	SHT 1	REV. 1
		4 PLACES ±0.--- 5.--- 3 PLACES ±0.--- 5.--- 2 PLACES ±0.--- 5.--- 1 PLACE ±0.--- 5.---	DRAWN BY & DATE COMERCIAL 9/7/10/06	CHECKED BY & DATE COMERCIAL 9/7/10/06	TITLE: MICRO-FIT PLUG 6 CIRCUIT, DUAL ROW COMPODRE SYSTEM	MOLEX INCORPORATED		MATERIAL NO. 43515-0001
DRAWING WHERE APPLICABLE MUST REMAIN WITHIN DIMENSIONS		THIS DRAWING CONTAINS INFORMATION THAT IS PROPRIETARY TO MOLEX INCORPORATED AND SHOULD NOT BE USED WITHOUT WRITTEN PERMISSION.						