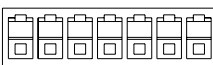
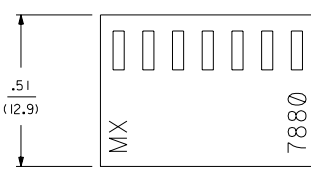
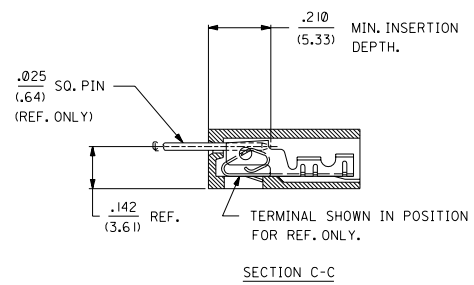
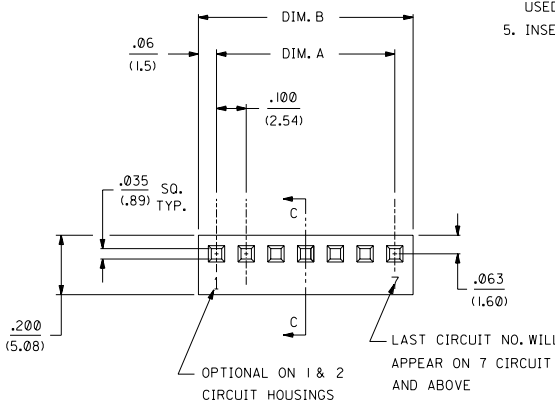


| NO. OF CKT'S. | DIM. A | DIM. B |
|---------------|---------------------------|---------------------------|
| 1 | | .122±.010 (3.10±.25) |
| 2 | .100±.004 (2.54±.10) | .222±.010 (5.64±.25) |
| 3 | .200±.004 (5.08±.10) | .322±.010 (8.18±.25) |
| 4 | .300±.004 (7.62±.10) | .422±.010 (10.72±.25) |
| 5 | .400±.004 (10.16±.10) | .522±.010 (13.26±.25) |
| 6 | .500±.005 (12.70±.13) | .622±.010 (15.80±.25) |
| 7 | .600±.005 (15.24±.13) | .722±.011 (18.34±.28) |
| 8 | .700±.005 (17.78±.13) | .822±.011 (20.88±.28) |
| 9 | .800±.006 (20.32±.15) | .922±.011 (23.42±.28) |
| 10 | .900±.006 (22.86±.15) | 1.022±.012 (25.96±.30) |
| 11 | 1.000±.006 (25.40±.15) | 1.122±.012 (28.50±.30) |
| 12 | 1.100±.006 (27.94±.15) | 1.222±.012 (31.04±.30) |
| 13 | 1.200±.007 (30.48±.18) | 1.322±.012 (33.58±.30) |
| 14 | 1.300±.007 (33.02±.18) | 1.422±.013 (36.12±.33) |
| 15 | 1.400±.011 (35.56±.28) | 1.522±.013 (38.66±.33) |
| 16 | 1.500±.011 (38.10±.28) | 1.622±.013 (41.20±.33) |
| 17 | 1.600±.011 (40.64±.28) | 1.722±.013 (43.74±.33) |
| 18 | 1.700±.011 (43.18±.28) | 1.822±.014 (46.28±.36) |
| 19 | 1.800±.011 (45.72±.28) | 1.922±.014 (48.82±.36) |
| 20 | 1.900±.011 (48.26±.28) | 2.022±.014 (51.36±.36) |
| 21 | 2.000±.012 (50.80±.30) | 2.122±.015 (53.90±.38) |
| 22 | 2.100±.012 (53.34±.30) | 2.222±.015 (56.44±.38) |
| 23 | 2.200±.012 (55.88±.30) | 2.322±.015 (58.98±.38) |
| 24 | 2.300±.012 (58.42±.30) | 2.422±.016 (61.52±.41) |
| 25 | 2.400±.013 (60.96±.33) | 2.522±.016 (64.06±.41) |
| 26 | 2.500±.013 (63.50±.33) | 2.622±.016 (66.60±.41) |
| 27 | 2.600±.013 (66.04±.33) | 2.722±.016 (69.14±.41) |
| 28 | 2.700±.013 (68.58±.33) | 2.822±.017 (71.68±.43) |



- NOTES:
1. DIMENSIONS GIVEN ACROSS CENTERLINES ARE SYMMETRICAL ABOUT THOSE CENTERLINES WITHIN HALF THE TOTAL TOLERANCES.
 2. THIS HOUSING FOR USE WITH SHROUDED TERMINAL 7879.
 3. THIS PRODUCT COMPLIES WITH MOLEX PRODUCT SPEC. NO. 7879.
 4. SPECIAL SUPPORT MAY BE REQUIRED FOR PRINTED CIRCUIT BOARDS USED WITH 10 OR MORE CIRCUIT CONNECTORS.
 5. INSERTION AND WITHDRAWAL FORCES RANGE FROM 1.3 TO 1.9 POUNDS PER CIRCUIT.

| OPTION CODE | | |
|-------------|-----------|---------------------------|
| OPT. CODE | RAMP | MATERIAL |
| A | NONE | NYLON, 94V-0, COLOR-WHITE |
| B | STD. RAMP | NYLON, 94V-0, COLOR-WHITE |
| C | POL. RAMP | NYLON, 94V-0, COLOR-WHITE |

7880 - N * - *
 NO. OF CKTS. VOID CODE
 NO. CORRESPONDS TO CKT. NO. VOIDED.
 MULT. VOIDS START WITH 51.

| | | | | | | | |
|--|--|--|--|---|--|---|--|
| LTR. REVISIONS | | LTR. REVISIONS | | DIMENSIONS SHOWN METRIC/INCH UNLESS OTHERWISE SPECIFIED TOLERANCES ANGULAR ± 1/32° INCH METRIC 3 PLACE ± .010 ± .25 2 PLACE ± .014 ± .35 1 PLACE ± .035 DRAFT WHERE APPLICABLE MUST REMAIN WITHIN DIMENSIONS | | REVISION ONLY ON CAD SYSTEM TITLE (2.54) / .100 KK, HOUSING FOR SHROUDED CRIMP TYPE TERMINAL MOLEX INCORPORATED SHEET NO. 1 OF 2 DATE 08/24/88 PART NO. SD-7880 DRWG. NO. 69532 | |
| ADD REGRIND UCP2003-1447 12/26/2002 SAMIEC | | DRWG. BY GUZIK CHKD. BY PATEL APP'D. LENZ SCALE : | | FILE NAME SEE CHART | | NO. DRAWING CONTAINS INFORMATION THAT IS PROPRIETARY TO MOLEX INC. AND SHOULD NOT BE USED WITHOUT WRITTEN PERMISSION. | |

