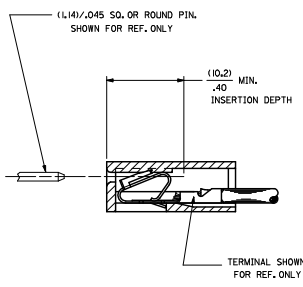
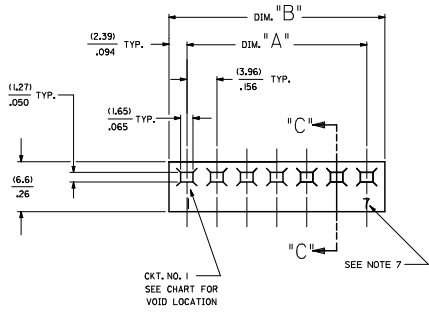
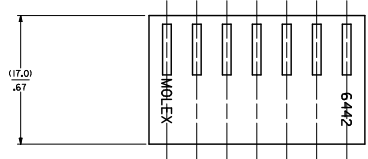


20 19 18 17 16 15 14 13 12 11 10 9 8 7 6 5 4 3 2 1



SECTION "C-C"



NO. OF CKT'S.	DIM. A	DIM. B
1	-----	(4.78±.18)
2	(3.96±.13)	(8.74±.18)
3	(7.92±.13)	(12.70±.18)
4	(11.89±.13)	(16.66±.18)
5	(15.85±.13)	(20.62±.18)
6	(19.81±.13)	(24.59±.18)
7	(23.77±.13)	(28.55±.18)
8	(27.74±.25)	(32.51±.30)
9	(31.70±.25)	(36.47±.30)
10	(35.66±.25)	(40.44±.30)
11	(39.62±.25)	(44.40±.30)
12	(43.59±.25)	(48.36±.30)
13	(47.55±.30)	(52.32±.36)
14	(51.51±.36)	(56.29±.41)
15	(55.47±.36)	(60.25±.41)
16	(59.44±.36)	(64.21±.41)
17	(63.40±.36)	(68.17±.41)
18	(67.36±.36)	(72.14±.41)
19	(71.32±.36)	(76.10±.41)
20	(75.29±.46)	(80.06±.51)
21	(79.25±.46)	(84.02±.51)
22	(83.21±.46)	(87.99±.51)
23	(87.17±.46)	(91.95±.51)
24	(91.14±.46)	(95.91±.51)
	(3.588±.018)	(3.776±.020)

- NOTES:  
 1. MATERIAL A: NYLON 6/6 UL94V-2. COLOR: NATURAL  
 2. FINISH: N/A  
 3. THIS PART COMPLIES WITH PRODUCT SPECIFICATION PS-40-02.  
 4. SEE SHEET 2 FOR OPTIONS.  
 5. HOUSING SHOWN ABOVE IS STANDARD HOUSING WITH NO OPTIONS.  
 6. THIS HOUSING FOR USE WITH TERMINAL NO.  
 6438-\*, (19-22 GA.) WITH (2.79)/.110 MAX. INSULATION DIA.  
 6838-\*, (19-24 GA.) WITH (2.79)/.110 MAX. INSULATION DIA.  
 7238-\*, (22-26 GA.) WITH (1.65)/.065 MAX. INSULATION DIA.  
 7. CIRCUIT SIZE MOLDED ON 4 THRU 24 CIRCUIT HOUSINGS ONLY.  
 8. THIS PART CONFORMS TO CLASS B REQUIREMENTS OF COSMETIC SPECIFICATION PS-45499-002.

HOUSING OPTIONS

CODE	HOOKS	SIDE HOOKS	RAMP
BLANK	NONE	NONE	NONE
A	NONE	YES	NONE
R	NONE	NONE	FRICTION
B	NONE	NONE	TYPE B
C	NONE	NONE	TYPE C

- 6442- \* N \* - \* - \*
- VOLTAGE RATING OPTION  
BLANK-NONE  
V= '250 VAC' ON HOUSING
  - MAT'L. OPTION  
BLANK= MATERIAL A (SEE NOTE 1)
  - MOLDED VOID CODE  
2=NO VOIDS  
A=CKT. 1 VOID,  
B=CKT. 2 VOID, ETC.  
5=1ST MULTIPLE VOID,  
52=2ND MULTIPLE VOID, ETC.

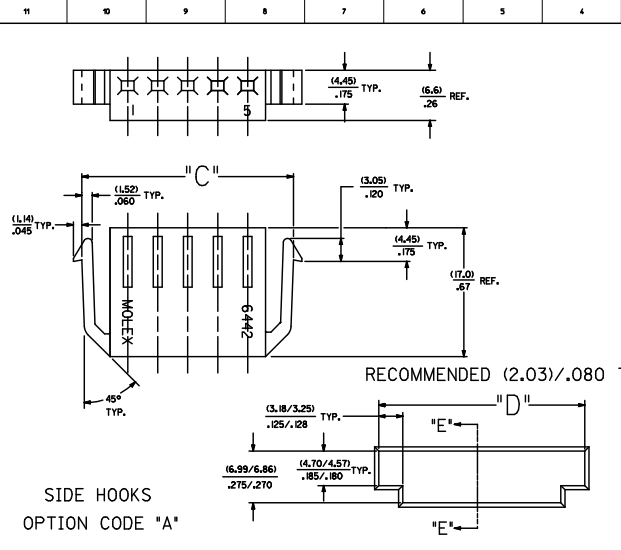
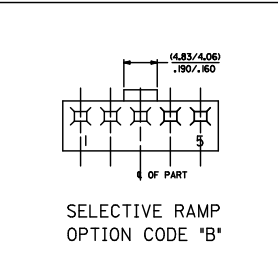
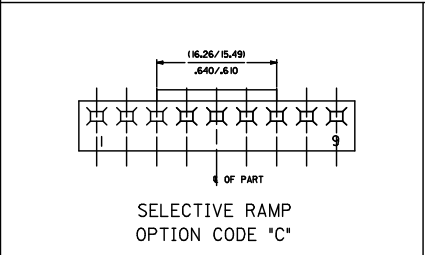
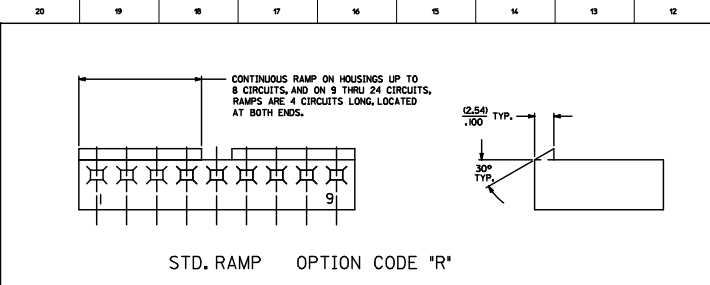
NO. OF CKT'S. 4 3 2 1

REMOVED OPTION SEE NOTE 1 J DRAWSKI/PPER 2006/07/13 CHROSSOUSEK 2006/07/13 APPELL/SMITH 2006/06/05	QUALITY SYMBOLS	GENERAL TOLERANCES (UNLESS SPECIFIED)	DIMENSION STYLE	SCALE	DESIGN UNITS	THIRD ANGLE PROJECTION
	4 PLACES ±.010 ±.010	MM/IN	DRAWN BY	INCH	INCH	
	3 PLACES ±.025 ±.010		CHECKED BY	DATE	DATE	
	2 PLACES ±.036 ±.010		APPROVED BY	DATE	DATE	
	ANGULAR ±1/2°		LENZ	1986/12/03	1986/12/03	
	DRAFT WHERE APPLICABLE MUST REMAIN WITHIN DIMENSIONS		MATERIAL NO.	DOCUMENT NO.		
			SEE CHART	SD-6442		
			THIS DRAWING CONTAINS INFORMATION THAT IS PROPRIETARY TO MOLEX INCORPORATED AND SHOULD NOT BE USED WITHOUT WRITTEN PERMISSION			

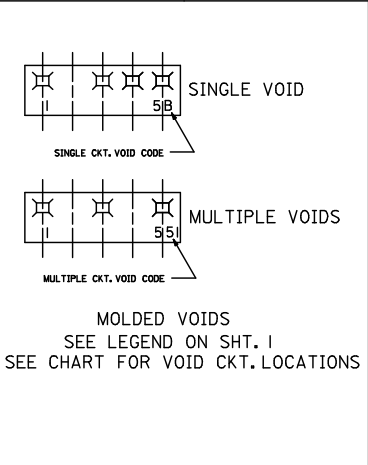
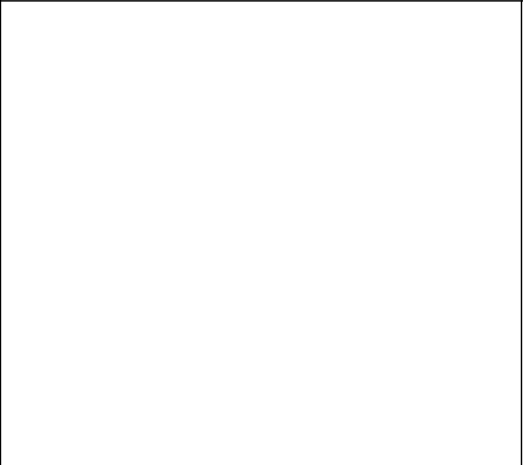
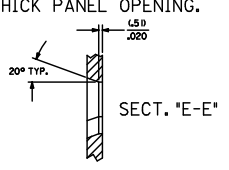
MOLEX MOLEX INCORPORATED

SD-6442

SHEET NO. 1 OF 4



NO. OF CTS.	DIM. 'C'	DIM. 'D'
2	.1648/.15.60	(.15.47/.15.34)
3	.649/.614	.609/.604
5	(20.45/19.36)	(19.43/19.30)
	.895/.770	.765/.760
	(28.37/27.48)	(27.36/27.23)
	L117/L082	L077/L072



QUALITY SYMBOLS	GENERAL TOLERANCES (UNLESS SPECIFIED)		DIMENSION STYLE		SCALE	DESIGN UNITS	THIRD ANGLE PROJECTION
	MIN	INCH	MM/IN	INCH			
▽=0	4 PLACES ±---	±---	DRAWN BY	DATE	---	INCH	⊕
▽=0	3 PLACES ±---	±.010	POLGAR	1986/12/05			
	2 PLACES ±0.25	±.014	CHECKED BY	DATE			
	1 PLACE ±0.36	±---	PATEL	1986/12/05			
	ANGULAR ±1/2°		APPROVED BY	DATE			
	DRAFT WHERE APPLICABLE MUST REMAIN WITHIN DIMENSIONS		LENZ	1986/12/05			
	SEE CHART		PATERIAL NO.	DOCUMENT NO.			
			SEE CHART	SD-6442			
THIS DRAWING CONTAINS INFORMATION THAT IS PROPRIETARY TO MOLEX INCORPORATED AND SHOULD NOT BE USED WITHOUT WRITTEN PERMISSION							

6442-N**			6442-RN**			6442-RN**			6442-RND**			6442-BN**			6442-CN**		
PART NO.	ENG. NO.	VOIDS	PART NO.	ENG. NO.	VOIDS	PART NO.	ENG. NO.	VOIDS	PART NO.	ENG. NO.	VOIDS	PART NO.	ENG. NO.	VOIDS	PART NO.	ENG. NO.	VOIDS
26-03-3011	6442-1-Z		26-03-4011	6442-R1-Z													
26-03-3021	6442-2-Z		26-03-4020	6442-R2-Z					26-03-7021	6442-R10-Z			6442-B1-Z				
26-03-3031	6442-3-Z		26-03-4030	6442-R3-Z					26-03-7031	6442-R30-Z			6442-B2-Z				
26-03-3041	6442-4-Z		26-03-4041	6442-R4-Z					26-03-7041	6442-R40-Z			6442-B3-Z				
26-03-3051	6442-5-Z		26-03-4050	6442-R5-Z						6442-R50-Z			6442-B4-Z				
26-03-3061	6442-6-Z		26-03-4061	6442-R6-Z						6442-R60-Z			6442-B5-Z				
26-03-3071	6442-7-Z		26-03-4070	6442-R7-Z					26-03-7071	6442-R70-Z			6442-B6-Z				
26-03-3081	6442-8-Z		26-03-4081	6442-R8-Z						6442-R80-Z			6442-B7-Z				
26-03-3091	6442-9-Z		26-03-4090	6442-R9-Z					26-03-7091	6442-R90-Z			6442-B8-Z				
26-03-3101	6442-10-Z		26-03-4101	6442-R10-Z						6442-R100-Z			6442-B9-Z				
26-03-3111	6442-11-Z		26-03-4111	6442-R11-Z						6442-R110-Z			6442-B10-Z				
26-03-3121	6442-12-Z		26-03-4121	6442-R12-Z				26-03-7121	6442-R120-Z			6442-B11-Z					
26-03-3131	6442-13-Z		26-03-4131	6442-R13-Z					6442-R130-Z			6442-B12-Z					
26-03-3141	6442-14-Z		26-03-4141	6442-R14-Z					6442-R140-Z			6442-B13-Z					
26-03-3151	6442-15-Z		26-03-4151	6442-R15-Z					6442-R150-Z			6442-B14-Z					
26-03-3161	6442-16-Z		26-03-4161	6442-R16-Z					6442-R160-Z			6442-B15-Z					
26-03-3171	6442-17-Z		26-03-4171	6442-R17-Z					6442-R170-Z			6442-B16-Z					
26-03-3181	6442-18-Z		26-03-4181	6442-R18-Z				26-03-7171	6442-R170-Z			6442-B17-Z					
26-03-3191	6442-19-Z		26-03-4191	6442-R19-Z					6442-R180-Z			6442-B18-Z					
26-03-3201	6442-20-Z		26-03-4201	6442-R20-Z					6442-R190-Z			6442-B19-Z					
26-03-3211	6442-21-Z		26-03-4211	6442-R21-Z					6442-R200-Z			6442-B20-Z					
26-03-3221	6442-22-Z		26-03-4221	6442-R22-Z					6442-R210-Z			6442-B21-Z					
26-03-3231	6442-23-Z		26-03-4231	6442-R23-Z					6442-R220-Z			6442-B22-Z					
26-03-3241	6442-24-Z		26-03-4241	6442-R24-Z					6442-R230-Z			6442-B23-Z					
	6442-15-B	2	26-03-4043	6442-R4-C	3				26-03-7042	6442-R40-B	2		6442-B24-Z				
	6442-9-B	2	26-03-4053	6442-R5-E	5				26-03-7072	6442-R10-C	3						
	6442-12-F	6	26-03-4065	6442-R6-E	5				26-03-7092	6442-R90-B	2						
	6442-7-51	1,7	26-03-4086	6442-R8-F	6				26-03-7093	6442-R90-E	5						
	6442-9-51	1,9	26-03-4097	6442-R9-G	7				26-03-7122	6442-R120-E	5						
	6442-9-52	2,9	26-03-4108	6442-R10-H	8				26-03-7172	6442-R170-E	5						
	6442-8-B	2	26-03-4120	6442-R12-J	10												
	6442-8-F	6	26-03-4157	6442-R15-G	7												
	6442-10-D	4	26-03-4073	6442-R17-C	3												
	6442-9-B	2	26-03-4094	6442-R9-D	4												
	6442-10-B	2	26-03-4096	6442-R9-F	6												
	6442-5-C	3	26-03-4092	6442-R9-B	2												
	6442-13-B	2	26-03-4064	6442-R6-D	4												
	6442-11-E	5	26-03-4075	6442-R11-E	5												
			26-03-4095	6442-R9-E	5												
			26-03-4085	6442-R8-E	5												
			26-03-4072	6442-R11-B	2												
			26-03-4012	6442-R7-B	2												
			26-03-4063	6442-R6-C	3												
			26-03-4062	6442-R6-B	2												
			26-03-4125	6442-R12-E	5												
			26-03-4123	6442-R12-C	3												
			26-03-4016	6442-R11-F	6												
			26-03-4129	6442-R12-I	9												
			26-03-4143	6442-R14-C	3												
			26-03-4093	6442-R9-C	3												
			26-03-4054	6442-R5-D	4												
			26-03-4052	6442-R5-B	2												
			26-03-4103	6442-R10-C	3												
			26-03-4042	6442-R4-B	2												
			26-03-4106	6442-R10-F	6												
				6442-R12-F	6												
			26-03-4112	6442-R11-B	2												
				6442-R13-B	2												
			26-03-4175	6442-R17-E	5												
			26-03-4102	6442-R10-B	2												
			26-03-4032	6442-R3-B	2												
			26-03-4082	6442-R8-B	2												
				6442-R7-51	1,7												
				6442-R9-51	1,9												
			26-03-4099	6442-R9-52	2,9												
			26-03-4149	6442-R14-M	13												
				6442-R4-A	1												
			26-03-4152	6442-R15-N	14												
				6442-R10-51	1,10												
			26-03-4083	6442-R10-51	3												

UPDATE TITLE LUC LEE 2005-04-8 J. DRINKWATER 2006/07/13 CHIKO SUDO 2006/07/13 APPROVALS REV	QUALITY SYMBOLS	GENERAL TOLERANCES (UNLESS SPECIFIED)	DIMENSION STYLE	SCALE	DESIGN UNITS	THIRD ANGLE PROJECTION	
	4 PLACES ± --- ± --- 3 PLACES ± --- ± --- 2 PLACES ± --- ± --- 1 PLACE ± --- ± ---	mm INCH POLGAR PATEL LENZ	mm INCH POLGAR PATEL LENZ	MM/IN DATE DATE DATE	--- INCH	INCH INCH	THIRD ANGLE PROJECTION
	DRAFT WHERE APPLICABLE MUST REMAIN WITHIN DIMENSIONS	MATERIAL NO. SEE CHART	DRAWN BY CHECKED BY APPROVED BY	DATE DATE DATE	DATE DATE DATE	DATE DATE DATE	DATE DATE DATE
		PATENT NO. SEE CHART	DOCUMENT NO. SD-6442	SHEET NO. 3 OF 4	THIS DRAWING CONTAINS INFORMATION THAT IS PROPRIETARY TO MOLEX INCORPORATED AND SHOULD NOT BE USED WITHOUT WRITTEN PERMISSION		