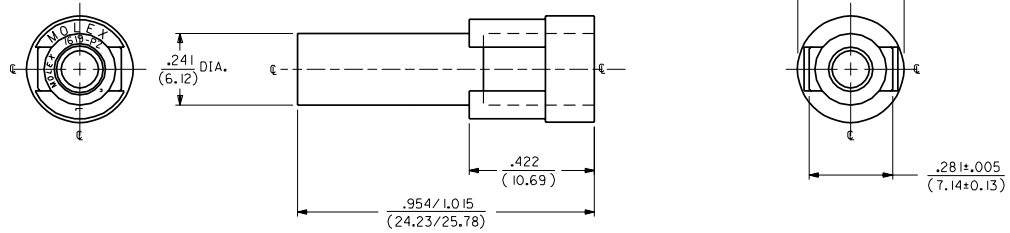


ORDER NO.	ENG. NO.	OLD ENG. NO.
03-09-2011	1619-IP1A5M1A	1619-P
03-09-7011	1619-IP1A5M1B	1619-P-D
03-09-7012	1619-IP1A5M1C	-----
03-09-7013	1619-IP1A5M1H	-----



ENGINEERING NUMBER SYSTEM

1619-IP1A5M1\*

NOTES:

1. THIS HOUSING IS FOR USE WITH THE  $.093 / (2.36)$  DIA. TERMINALS.
2. PRODUCT SPEC. 02-09 APPLIES.
3. MATERIAL: NYLON 66, 94V-2

COLOR

- |            |           |
|------------|-----------|
| A) NATURAL | F) GRAY   |
| B) BLACK   | G) RED    |
| C) AMBER   | H) BLUE   |
| D) BROWN   | J) GREEN  |
| E) ORANGE  | K) YELLOW |

REV.	SH.	REV.	LTR.	REVISIONS
3	W2			
2	W2	W2		REDRAWN ON CAD ECN UB151 WANG 97-11-12
1	W2			

DIMENSIONS SHOWN: METRIC INCH		REVISIONS									
UNLESS OTHERWISE SPECIFIED TOLERANCES ANGULAR $\pm 1/2^\circ$		REVISE ONLY ON CAD SYSTEM									
<table border="1"> <thead> <tr> <th>INCH</th> <th>METRIC</th> </tr> </thead> <tbody> <tr> <td>3 PLACE <math>\pm .010</math></td> <td>---</td> </tr> <tr> <td>2 PLACE <math>\pm .014</math></td> <td><math>\pm 0.25</math></td> </tr> <tr> <td>1 PLACE <math>\pm .035</math></td> <td><math>\pm 0.35</math></td> </tr> </tbody> </table>		INCH	METRIC	3 PLACE $\pm .010$	---	2 PLACE $\pm .014$	$\pm 0.25$	1 PLACE $\pm .035$	$\pm 0.35$	TITLE: HOUSING, PLUG $.093 / (2.36)$ DIAMETER	
INCH	METRIC										
3 PLACE $\pm .010$	---										
2 PLACE $\pm .014$	$\pm 0.25$										
1 PLACE $\pm .035$	$\pm 0.35$										
DRAFT WHERE APPLICABLE MUST REMAIN WITHIN DIMENSIONS		SHEET NO. 1 OF 1 DATE 11/12/97									
MOLEX INCORPORATED 60522 U.S.A.		PART NO. SD-1619-IP* DRWG. NO. SD-1619-IP*									
DRWG. BY: WANG APP'D. RE:	ENVD. BY: RW SCALE: 4:1	FILE NAME: SP1619X1.DWG	THIS DRAWING CONTAINS INFORMATION THAT IS PROPRIETARY TO MOLEX INC. AND SHOULD NOT BE USED WITHOUT WRITTEN PERMISSION. CP C								