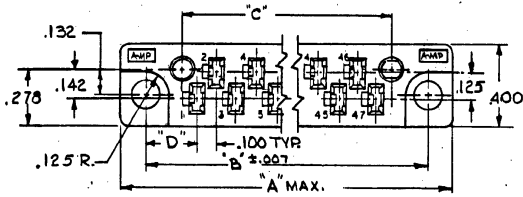
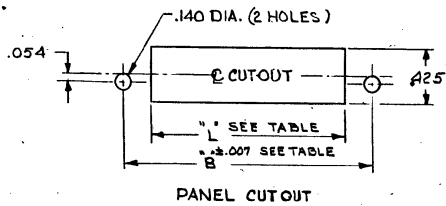
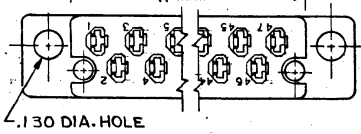
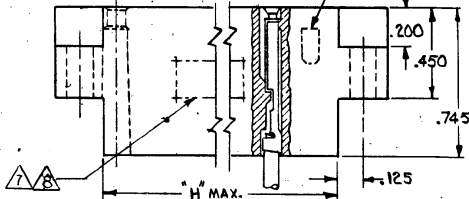


© 1977 AMP INCORPORATED. ALL RIGHTS RESERVED. AMP PRODUCTS COVERED BY PATENTS AND/OR PATENTS PENDING. APPROVED PER GOVT CONTRACT NO.

DATE	BY	DESCRIPTION	DATE	APPROVED
7-17-77	DR	REVISED ADDED SHEET 2	1411	DR
1-26-77	DR	REVISED PER ECN 2881	M.S.	DR
10-9-77	DR	REVISED PER ECN 3303	M.S.	DR
	JW	OBSCURE REVISION 0949		JW
	TJW	CORRECT REV LTR DF-1297	CT	TJW
1-31-78	JW	REV PER 0600-4348-95	TA	JW
3/2/78	DW	REV PER 0600-4864-95	TA	DW



SEE 582200 FOR PARTS WITH KEYING BOSSES



NO CAVITIES	"A" MAX.	"B"	"C"	"L"	"H" MAX.	"D"
17	2.390	2.130	1.764	1.910	1.897	
23	2.990	2.730	2.364	2.510	2.497	
29	3.590	3.330	2.964	3.110	3.097	.265
35	4.190	3.930	3.564	3.710	3.697	
41	4.790	4.530	4.154	4.310	4.297	
47	5.623	5.363	4.764	5.143	5.130	.381

NOTE:

- 1-THE CAVITY CENTERLINES ARE MEASURED FROM THE CENTERLINE OF THE ALIGNMENT PIN HOLES AND AS LONG AS THE CAVITIES FALL WITHIN THE TOLERANCES INDICATED THE ALLOWABLE WARPAGE IS INDEPENDENT OF THE CAVITIES AND BECOMES A MEASUREMENT OF THE OUT SIDE SURFACE OF THE BLOCK. IT DOES NOT AFFECT THE MATING OF THIS BLOCK WITH 582152.
  - 2- THESE BLOCKS MATE WITH PART 582152
  - 3- FOR SUPPLEMENTAL SPECIFICATIONS SEE E.S. 8-1-3
- ▲ (WHERE SPECIFIED) AMP PART NO. NOT STAMPED ON PART. DATE CODE WILL BE STAMPED ON PART.  
 ▲ CUSTOMER PART NO. TO BE STAMPED IN ADDITION TO AMP PART NO.  
 ▲ OBS PART NO.  
 ▲ AMP PART NUMBER AND DATE CODE MARKED APPROX THIS AREA EITHER SIDE.  
 HOUSING:  
 MATERIAL: DIALYL PHTHALATE  
 GLASS FILLED  
 PER: MIL-M-14F, TYPE S.D.G-F.  
 COLOR: GREEN (EXCEPT AS NOTED)  
 ▲ AMP PART NUMBER, DATE CODE AND MILITARY NUMBER MARKED APPROX THIS AREA.

OTHER DIMENSIONS SPECIFIED DIMENSIONS ARE IN INCHES FRACTIONS TO DECIMALS OR ANGLES TO MINUTES		CONTRACT NO.		AMP INCORPORATED HARRISBURG, PENNSYLVANIA	
MATERIAL: SEE CALL-OUT		DATE: 7-17-77		AMP TRADE MARK	
FINISH: —		DRAWN BY: [Signature]		AMP BLADE RECEPTACLE HOUSING	
OTHER APPD: —		CHECKED BY: [Signature]		PART NO: 00272	
SCALE: 3-1		DATE: 7/26/77		MILITARY NO: 582151	
SHEET 1 OF 2 SHTS.		CUST. 582151		CUST. DRAWING	


AMP 1471-3 (8/74)

CUSTOMER DRAWING

© 1967 AMP INCORPORATED. ALL RIGHTS RESERVED. AMP PRODUCTS COVERED BY PATENTS AND/OR PATENTS PENDING. APPROVED PER GOVT CONTRACT NO.

REVISIONS			
REV	DATE	DESCRIPTION	APPROVED
B	1/28	OBS AS PER ENDS OF 44	JW
A3		SEE SH7 #1	

PART NO.	NO. CAVITIES	MARKING
3-582151-1	17	△
3-582151-2	23	△
3-582151-3	29	△
3-582151-4	35	△
3-582151-5	41	△
3-582307-1	47	△
2-582151-4	35	GRAY HOUSING △
4-582151-5	17	STAMP CUST. PART NO. △ △
4-582151-6	23	STAMP CUST. PART NO. △ △
4-582151-7	29	STAMP CUST. PART NO. △
4-582151-8	35	STAMP CUST. PART NO. △ △
4-582151-9	41	STAMP CUST. PART NO. △ △
1-582307-3	47	STAMP CUST. PART NO. △
5-582151-1	17	M 21097/13-01 △
5-582151-2	23	M 21097/13-02 △
5-582151-3	29	M 21097/13-03 △
5-582151-4	35	M 21097/13-04 △
5-582151-5	41	M 21097/13-05 △
5-582307-1	47	M 21097/13-06 △
4-582151-2	23	STAMP CUST. PART NO. △ △
4-582151-3	29	STAMP CUST. PART NO. △ △

USES OTHERWISE SPECIFIED PARTITION TOOLS AND DIMENSIONS TO BE GIVEN ON DECIMALS FINISH TREATMENT OTHER APPS		CONTRACT NO. DATE NAME DRAWN BY CHECKED BY DATE DATE DATE		 AMP INCORPORATED HARRISBURG, PENNSYLVANIA	
		DATE NAME DATE DATE		AMP BLADE RECEPTACLE HOUSING	
		DATE NAME DATE		C 00779 582151	
		DATE NAME DATE		SCALE ACTUAL SHEET 2 OF 2 SHTS	

AMP 1471-1 (REV 3)

CUSTOMER DRAWING

CUST-582151