

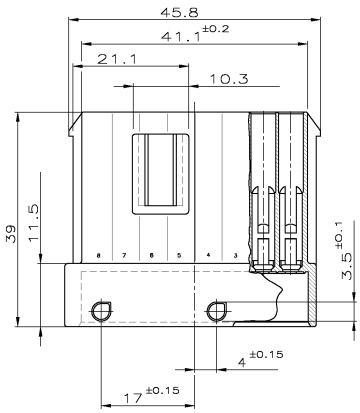
4

2

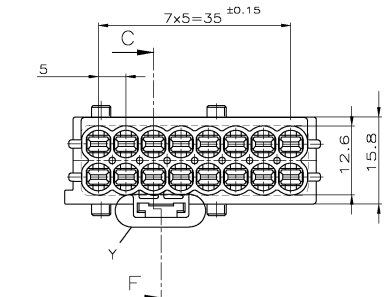
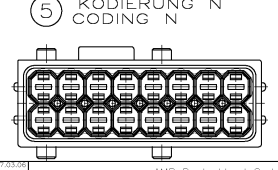
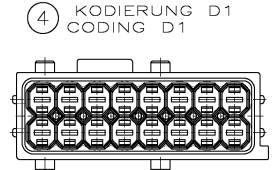
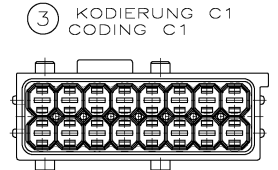
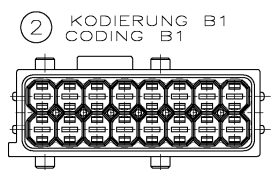
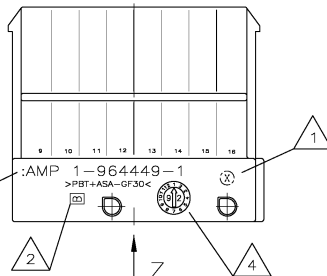
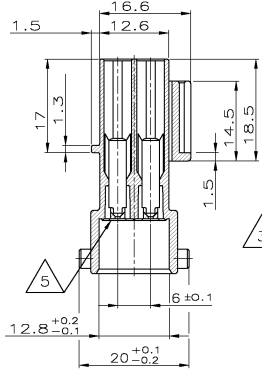
1

REVISIONS
 A1 -
 F LTR
 PROJECT NO.: 11-0228
 B1 SEE E-06-014918
 B3 SEE E-08-018396

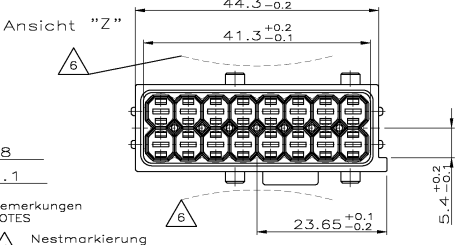
| REV. | DATE | BY | CHKD. | DESCRIPTION |
|------|----------|----|-------|-------------|
| A1 | - | F | LTR | REVISIONS |
| B1 | 20.06.06 | | | DATE DATE |
| B3 | 23.07.06 | | | DATE DATE |



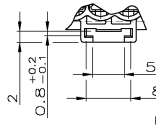
Schnitt C-F



Ansicht "Z"



Einzelheit "Y"



Bemerkungen NOTES

- 1 Nestmarkierung CAVITY MARKING
- 2 Werkzeug-Änderungsindex REVISION STATUS OF THE MOULD
- 3 AMP Zeichen, -Nummer und Materialkennzeichnung oder TE-Logo AMP SIGN, -NUMBER AND MATERIAL MARKING OR TE-LOGO
- 4 Produktionsdatum mit Datumstempel PRODUCTION DATE WITH DATE INSERT
- 5 Passende Dichtung PN 963216-1 USED WITH SEALING 963216-1
- 6 Maximaler Einfall max. 0,25 SURFACE MAX. 0,25
- 7 Für Au-Varianten der Kontakte PN X-XXXXXX-3 verwenden FOR Au-VERSION OF CONTACTS USE X-XXXXXX-3

1-..-1 wie gezeichnet AS SHOWN

| TAB | 2.8x0.8mm | 2-962916-1 | 1.5 - 2.5 | CuFe 2 | TINNED | 0-0828905-1 | WHITE | IPx 9K |
|-----|-----------|------------|------------|--------|--------|-------------|------------|--------|
| TAB | 2.8x0.8mm | 2-962915-1 | 0.75 - 1.0 | CuFe 2 | TINNED | 0-0828904-1 | LIGHT BLUE | IPx 9K |
| TAB | 2.8x0.8mm | 2-962915-1 | 0.5 | CuFe 2 | TINNED | 0-0863294-1 | BLUE | IPx 9K |
| TAB | 2.8x0.8mm | 1-965982-1 | 0.35 | CuSn 4 | TINNED | 0-0963294-1 | BLUE | IPx 9K |

| CONTACT-SYSTEM | STRIP-ORDER-NO. | WIRE-SIZE [mm²] | MATERIAL | FINISH | SINGLE-WIRE SEAL | COLOR | WATER-TIGHTNESS |
|----------------|-----------------|-----------------|----------|---------|-------------------------------|-------|-----------------|
| 1-..-1 | 1-964449-1 | 1.5 | PBT | weiss | 16pol. Gehäuse fuer 2.8mm Tab | 5 | |
| 2 | 1-964449-1 | 1.5 | PBT | brown | 16pol. Gehäuse fuer 2.8mm Tab | 4 | |
| 3 | 1-964449-1 | 1.5 | PBT | blau | 16pol. Gehäuse fuer 2.8mm Tab | 3 | |
| 4 | 1-964449-1 | 1.5 | PBT | grau | 16pol. Gehäuse fuer 2.8mm Tab | 2 | |
| 5 | 1-964449-1 | 1.5 | PBT | schwarz | 16pol. Gehäuse fuer 2.8mm Tab | 1 | |

| CUSTOMER PART NO. | AMP PART NO. | REV. | PCS. | MATERIAL | SURFACE COLOR | DESCRIPTION | ITEM NO. |
|-------------------|--------------|------|------|----------|---------------|-------------------------------|----------|
| | 1-964449-1 | B | 1 | PBT | schwarz | 16pol. Gehäuse fuer 2.8mm Tab | 1 |

| REV. | DATE | BY | CHKD. | DESCRIPTION |
|------|------|----|-------|-------------|
| A1 | - | F | LTR | REVISIONS |

AMP Deutschland GmbH
 D - 63225 Langen

16pol. Gehäuse fuer 2.8mm Tab
 16 POS. TAB HOUSING 2.8MM

AMP 00779 964449

ASSISTANT 2:1 BLATT 1 OF 1 REV B3

AMP 1471-9 REV 27A066 Translated 070309 031429 (11/11/02/HHM/MS) from compulcon.com, Inc., Medusa Revision 12.3.01