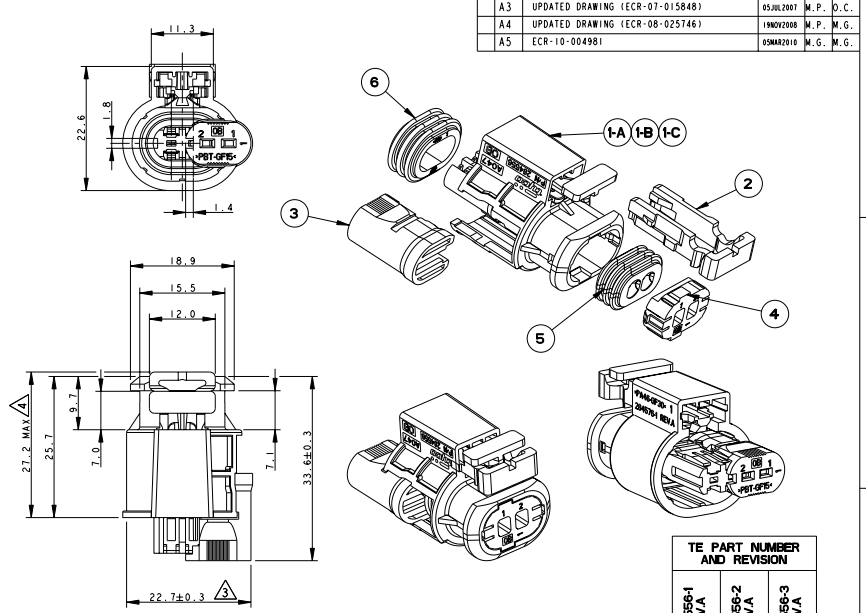
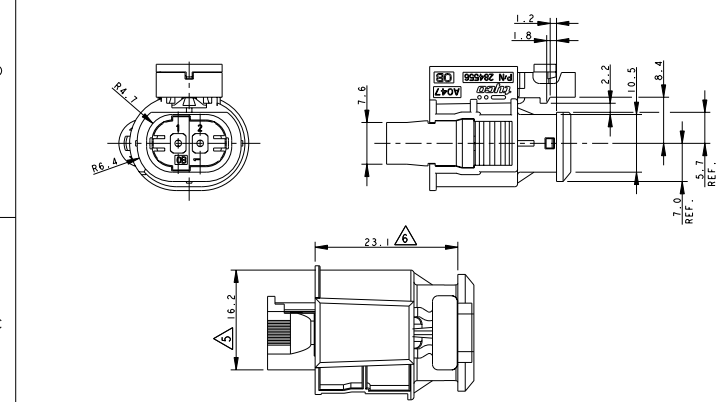
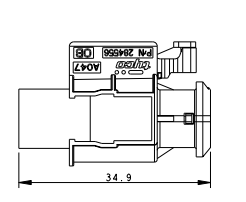
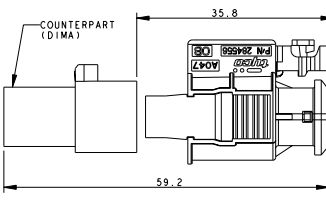


REV. NO.	DATE	DESCRIPTION	BY	CHKD
A2	07MAR2002	RELEASED FOR PROD. (ET00-0079-02)	M. P. D. C.	
A3	05JUL2007	UPDATED DRAWING (ECR-07-015848)	M. P. D. C.	
A4	19NOV2008	UPDATED DRAWING (ECR-08-025746)	M. P. M. G.	
A5	03MAR2010	ECR-10-004981	M. G. M. G.	



DIMENSIONS OF MATING SPACE WITH COUNTERPART (QUOTA DI INGOMBRO PER ACCOPPIAMENTO CON DIMA)

DIMENSION FOR FINAL MATING SPACE (QUOTA DI INGOMBRO FINALE)



- 1) ALL CAVITIES ARE SUITABLE FOR RECEPTACLE CONTACTS:
 SENSOR FLAT CONTACT P/N 929025-1, WIRE RANGE FROM 1.5 TO 2.0 mm²
 SENSOR FLAT CONTACT P/N 929027-1, WIRE RANGE FROM 0.75 TO 1.0 mm²
 BOTH CONTACTS ARE GOLD PLATED IN CONTACT AREA
 FOR MINIMUM ACCEPTABLE CABLE INSULATION DIAMETER SEE SEALING PERFORMANCES SECTION ON PRODUCT SPECIFICATION N. 108-20207
 SEE APPLICATION SPEC. 114-18254 FOR CORRECT WIRE CRIMPING PARAMETERS
 (LE CAVITÀ SONO ADATTE PER CONTATTI)
 SENSOR FLAT CONTACT P/N 929025-1, RANGO FILO DA 1.5 A 2.0 mm²
 SENSOR FLAT CONTACT P/N 929027-1, RANGO FILO DA 0.75 A 1.0 mm²
 ENTRAMBI I CONTATTI SONO DORATI NELLA ZONA DI CONTATTO
 PER IL MINIMO DIAMETRO ACCETTABILE DELL'ISOLANTE VEDI PARAGRAFO 'SEALING PERFORMANCES' SU SPECIFICA DI PRODOTTO N. 108-20207.
 VEDI SPECIFICA DI APPLICAZIONE N. 114-18254 PER LA CORRETTA AGGRAFFATURA DEL CAVO.
- 2) FOR COUNTERPART INTERFACE DRAWING SEE SHEET 2 OF 2 (PER IL DISEGNO DELLA CONTROPARTE DI INTERFACCIA VEDI FOGLIO 2 DI 2)
- 3) SECONDARY LOCK SUPPLIED IN PRE-ASSEMBLED POSITION (AGGANCIAMENTO SECONDARIO FORNITO IN POSIZIONE PRE-ASSEMBLATA)
- 4) CPA SUPPLIED IN PRE-ASSEMBLED POSITION (CPA FORNITO IN POSIZIONE PRE-ASSEMBLATA)
- 5) SECONDARY LOCK IN PROPER POSITION FOR MATING WITH COUNTERPART (AGGANCIAMENTO SECONDARIO IN POSIZIONE CORRETTA PER CONNESSIONE CON CONTROPARTE)
- 6) CPA IN CLOSED POSITION, WHEN THE CONNECTOR IS PROPERLY MATED WITH COUNTERPART (CPA IN POSIZIONE CHIUSA QUANDO IL CONNETTORE È CORRETTAMENTE ACCOPPIATO CON CONTROPARTE)

ITEM	DESCRIPTION	MATERIAL	COLOUR	QTY
1-A	2 POS. HOUSING (BLOCCETTO PORTACONTATTI 2 POSIZIONI)	PA 4.6 GF	BLACK (NERO)	1
1-B	2 POS. HOUSING (BLOCCETTO PORTACONTATTI 2 POSIZIONI)	PA 4.6 GF	BROWN (MARRONE)	1
1-C	2 POS. HOUSING (BLOCCETTO PORTACONTATTI 2 POSIZIONI)	PA 4.6 GF	GREY (GRIGIO)	1
2	CPA-CONNECTOR POSITION ASSURANCE (DISPOSITIVO CORRETTO ACCOPPIAMENTO)	PBT GF	YELLOW (GIALLO)	1
3	SECONDARY LOCK (DISPOSITIVO AGGANCIAMENTO SECONDARIO)	PBT GF	RED (ROSSO)	1
4	POLARIZATOR (COPERCHIO POLARIZZATORE)	PBT GF	BLACK (NERO)	1
5	FAMILY SEAL (GUARNIZIONE MULTIPLA)	LSR	REDDISH BROWN (ROSSO MATTONE)	1
6	COUPLING SEAL (GUARNIZIONE FRONTALE)	LSR	REDDISH BROWN (ROSSO MATTONE)	1

ITEM	DESCRIPTION	MATERIAL	COLOUR	QTY
1-A	2 POS. HOUSING (BLOCCETTO PORTACONTATTI 2 POSIZIONI)	PA 4.6 GF	BLACK (NERO)	1
1-B	2 POS. HOUSING (BLOCCETTO PORTACONTATTI 2 POSIZIONI)	PA 4.6 GF	BROWN (MARRONE)	1
1-C	2 POS. HOUSING (BLOCCETTO PORTACONTATTI 2 POSIZIONI)	PA 4.6 GF	GREY (GRIGIO)	1
2	CPA-CONNECTOR POSITION ASSURANCE (DISPOSITIVO CORRETTO ACCOPPIAMENTO)	PBT GF	YELLOW (GIALLO)	1
3	SECONDARY LOCK (DISPOSITIVO AGGANCIAMENTO SECONDARIO)	PBT GF	RED (ROSSO)	1
4	POLARIZATOR (COPERCHIO POLARIZZATORE)	PBT GF	BLACK (NERO)	1
5	FAMILY SEAL (GUARNIZIONE MULTIPLA)	LSR	REDDISH BROWN (ROSSO MATTONE)	1
6	COUPLING SEAL (GUARNIZIONE FRONTALE)	LSR	REDDISH BROWN (ROSSO MATTONE)	1

DIMENSIONS: mm 	TO BE USED IN CONJUNCTION WITH THE FOLLOWING CONTACTS: CONTACTS: 0 PLC #0.3 1 PLC #0.2 2 PLC #0.1 3 PLC #0.1 4 PLC #0.1 ANGLES: 90° MATERIAL: TWISS	DWG: P_CASSANDRINI 24MAR99 CDR: D_CANILIO 24MAR99 APPROV:	Tyco Electronics AMP Italia S.r.l. C.so F.lli Cervi 15 Collegno (TO)
PRODUCT SPEC: 108-20207 APPLICATION SPEC: 411-20059 WEIGHT:		NAME: 2 POSITIONS CONNECTOR FOR INJECTION COIL SIZE: A2 CASE CODE: 00779 DRAWING NO: 284556 RESTRICTED TO:	
CUSTOMER DRAWING		SCALE: 2:1 SHEET 1 OF 2 REV: A5	

4

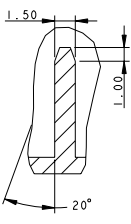
3

2

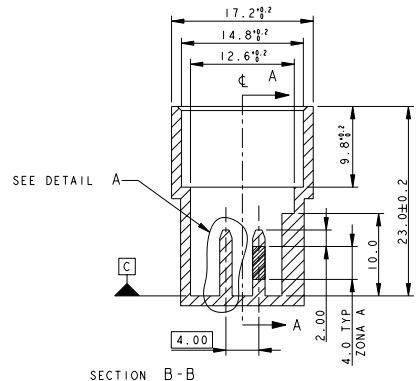
1

THIS DRAWING IS UNPUBLISHED. RELEASED FOR PUBLICATION 2009
BY TYCO ELECTRONICS CORPORATION. ALL INTERNATIONAL RIGHTS RESERVED.
COPYRIGHT 2009

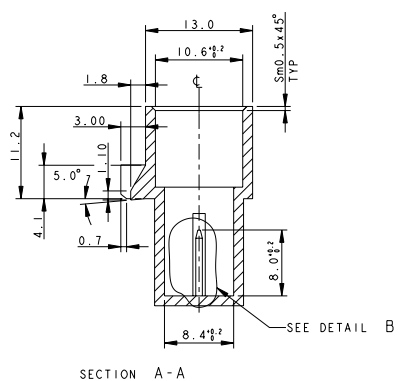
LOC	DISP	REV	DESCRIPTION	DATE	BY	APPV
1	-	1	SEE SHEET 1	-	-	-



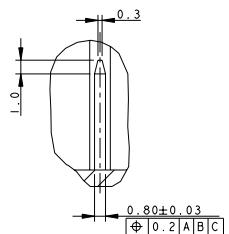
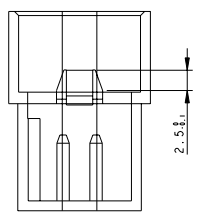
DETAIL A
SCALE 5:1



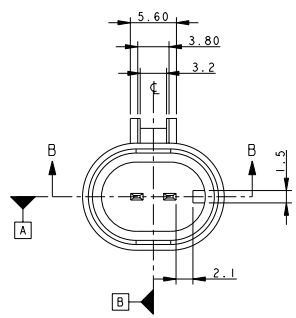
SECTION B-B



SECTION A-A



DETAIL B
SCALE 5:1



I TAB DEVONO SOPPORTARE UN CARICO DI 15 N APPLICATO COME IN FIGURA, SENZA SUBIRE, AL TERMINE DELL'APPLICAZIONE DELLA FORZA, UNA DEFORMAZIONE PERMANENTE SUPERIORE A 0,1mm IN TUTTE LE DIREZIONI!
LA PROVA PREVEDE LA RIMOZIONE DELLA CORONA PLASTICA ESTERNA.
(THE TABS MUST WITHSTAND A 15N LOAD APPLIED AS SHOWN, WITHOUT SUFFERING A PERMANENT DEFORMATION GREATER THAN 0,1mm, IN ALL DIRECTION, AFTER FORCE APPLICATION.
THE PLASTIC EXTERNAL HOOD MUST BE REMOVED TO PERFORM THE TEST.)

MATERIALS:
(MATERIALI:)

- BODY IN PLASTIC MATERIAL SUITABLE FOR 150°C TEMPERATURE (CORPO IN MATERIALE PLASTICO ADATTO PER TEMPERATURA DI 150°C CONTINUATIVI)
- TABS: BRASS WITH 0.4 micron MIN GOLD IN ZONE A OVER 1.3/3.5 micron MIN NICKEL (LINGUETTE IN OTTONE DORATO 0.4 micron MIN ORO IN zona A su 1.3/3.5 micron NICKEL)

DIMENSIONS: mm 		TOLERANCES UNLESS OTHERWISE SPECIFIED: mm 0 PLC ±0.3 1 PLC ±0.2 2 PLC ±0.1 3 PLC ±0.1 4 PLC ±0.0000 ANGLES ±0.05°		DWG: P_CASSANDINI CHK: O_CANUJO DATE: 2 MAR 99	Tyco Electronics Tyco Electronics AMP Italia S.r.l. C.so F.lli Cervi 15 Collegno (TO)
MATERIAL: TITAN		PRODUCT SPEC: 108-20207 APPLICATION SPEC:		NAME: 2 POSITIONS CONNECTOR FOR INJECTION COIL SIZE: A200779 CAGE CODE: 284556 DRAWING NO: 284556	RESTRICTED TO:
CUSTOMER DRAWING		SCALE: 2:1		SHEET 2 OF 2 REV A5	