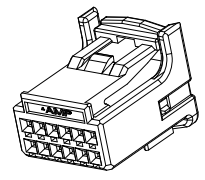
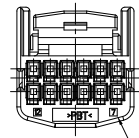
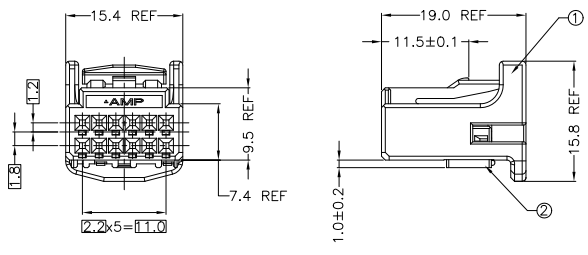


THIS DRAWING IS UNPUBLISHED. RELEASED FOR PUBLICATION
 © COPYRIGHT BY TYCO ELECTRONICS CORPORATION, ALL RIGHTS RESERVED.

LDC		DIST		REVISIONS			
P	LTR	DESCRIPTION	DATE	DWN	APVD		
	O	RELEASED(FC00-0092-02)	18,JUN,'02	HS	CS		
	A	REVISED(ECR-06-022215)	26,JUN,'07	SW	JK		



3-D VIEW
(SCALE 2:1)



CIRCUIT NUMBER

- NOTES;
1. RETAINER SHOULD BE SET TO THE PRE-ASSEMBLY POSITION WITHIN THE PLUG HOUSING WHEN SHIPPED TO THE CUSTOMER
 2. THE RETENTION LATCH OF THE RETAINER MUST BE OUT SIDE OF PLUG HOUSING WHEN PRE-ASSEMBLY
 3. RETAINER RETENTION FORCE FROM HOUSING; 20N MIN.
 4. PART NUMBER OF CAP HOUSING : 1318772
 5. APPLIED TERMINAL :

PART NO.	WIRE RANGE
1123343-1	0.3-0.5SQ

NO	COLOR	MATERIAL	DESCRIPTION	Q'TY	REV
2	WHITE	PBT	DBL HSG	1	1
1	Ⓐ BLACK	PBT	PLUG HSG	1	
	WHITE	PBT	PLUG HSG	1	

THIS DRAWING IS A CONTROLLED DOCUMENT FOR TYCO ELECTRONICS CORPORATION. IT IS SUBJECT TO CHANGE AND THE CONTROLLING ORGANIZATION SHOULD BE CONTACTED FOR THE LATEST REVISION.

DIMENSIONS: mm
 TOLERANCES UNLESS OTHERWISE SPECIFIED:
 0-XX.X10 ± 0.2
 10-XX.X30 ± 0.25
 30-XX ± 0.3
 ANGLES ± 3°

3rd ANGLE PROJECTION

MATERIAL: SEE TABLE
 FINISH: -----

DVN : SW NA
 CHK : YM CHOI
 APVD : JK SONG
 PRODUCT SPEC : -----
 APPLICATION SPEC : 114-5250

tyco Electronics
 AMP KOREA, kyungsan, korea

NAME: 025 12P PLUG ASSEMBLY

SIZE: A3 CAGE CODE: 00779 DRAWING NO: 936348 RESTRICTED TO: -
 WEIGHT: 2.1g

CUSTOMER DRAWING SCALE: 2:1 SHEET: 1 OF 1 REV: A