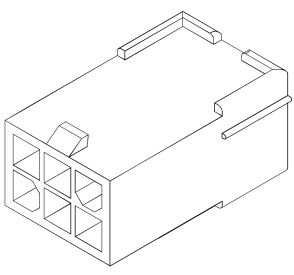
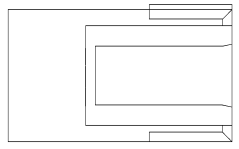
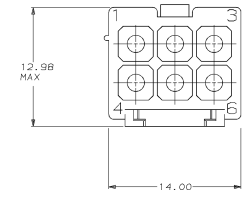
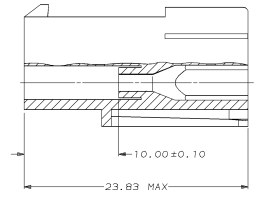
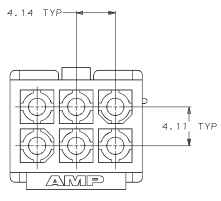


THIS DRAWING IS UNPUBLISHED.
 RELEASED FOR PUBLICATION
 BY AMP INCORPORATED. ALL INTERNATIONAL RIGHTS RESERVED.

REVOLUTIONS		DATE	APP
CM	53	10-13-94	ES
0	RLSD PER PR CH 94-119		



3-DIMENSIONAL MODEL
 NTS

MM	IN	MM	IN
4.14	.163	23.83	.938
4.17	.162	14.00	.551
0.13	.005	13.21	.520
0.10	.004	10.00	.394

CONVERSION TABLE

METRIC

THIS DRAWING IS A CONTROLLED DOCUMENT FOR AMP INCORPORATED. IT IS SUBJECT TO CHANGE AND THE CONTROLLING PART NUMBER ORGANIZATION SHOULD BE CONTACTED FOR THE LATEST REVISION.

DO NOT SCALE PRINT. UNLESS SPECIFIED DIMENSIONS IN mm (INCHES) TOLERANCES ON: 2 P.L.C. DEC # 0.13 3 P.L.C. DEC # - ANGLES # -		DR 10-13-94 C. SALTON CHK 10-13-94 R. SARGENT APPD 10-13-94 H. OSTAD APPD 10-13-94 H. OSTAD PRODDT SPEC - APPLICATION SPEC - FINISH - METRIC -		794047-1 PART NO AMP AMP Incorporated Harrisburg, PA 17105-3608 CAP, 6 CIRCUIT, MINI UNIVERSAL MATE-N-LOK™ NAME SIZE D CASE CODE 00773 DRAWING NO. 794047 SCALE 5:1 SHEET 1 OF 1	
---	--	---	--	--	--

CUSTOMER DRAWING