

4

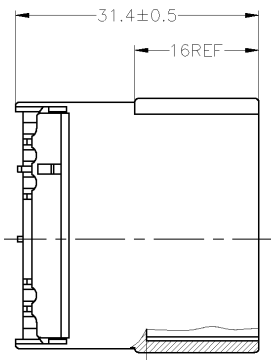
3

2

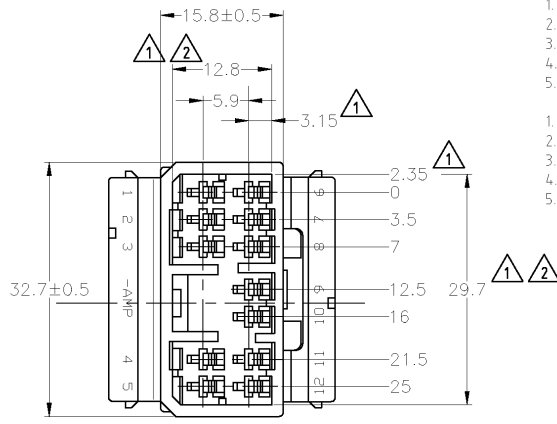
1

THIS DRAWING IS UNPUBLISHED. RELEASED FOR PUBLICATION
 © COPYRIGHT BY TYCOO ELECTRONICS CORPORATION. ALL INTERNATIONAL RIGHTS RESERVED.

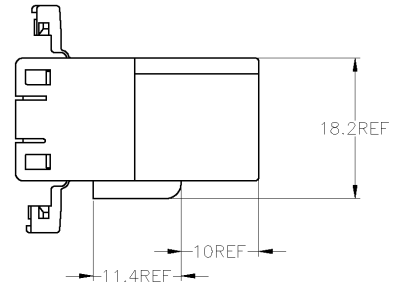
LOC	DIST	REVISIONS					
P	LTR	DESCRIPTION	DATE	DWN	APVD		
J	-	E1	REVISED	ECR-08-031766	05DEC08	SF	KB



-A-



1. MUST BE KEPT BETWEEN **-A-** AND 2
 2. TO BE MATED WITH PLUG HOUSING SMOOTHLY
 3. APPLIED TAB CONTACT; P/N 173633 AND 173645
 4. APPLIED PLUG HOUSING; P/N 173851
 5. PRODUCT SPEC; 108-5264
1. **-A-** 面より2mmの範囲で測定
 2. 相手ハウジングと所定の機能を満足して嵌合できること
 3. 内装するタブコンタクトは型番173633、173645
 4. 嵌合相手ハウジング型番173851
 5. 製品規格：108-5264



V-2	白 (WHITE)	1-174933-1
	オレンジ (ORANGE)	174933-8
	濃灰 (DARK GRAY)	174933-6
	青 (BLUE)	174933-5
	緑 (GREEN)	174933-4
	黒 (BLACK)	174933-2
HB	白 (WHITE)	174933-1
	色 (COLOR)	型番 (PART NUMBER)

使用材料難燃グレード (FLAMMABILITY OF MATERIAL)

THIS DRAWING IS A CONTROLLED DOCUMENT.

DWN: S.FUJITA	05DEC08	Tyco Electronics Corporation Kawasaki, Japan	NAME: 070 SERIES MULTILOCK CONNECTOR 12 POSITION CAP HOUSING WIRE TO WIRE		
CHK: K.BETSUI	05DEC08				
APVD: K.BETSUI	05DEC08	SIZE: A3	CAGE CODE: 00779	DRAWING NO: 174933	RESTRICTED TO: -
DIMENSIONS: mm TOLERANCES UNLESS OTHERWISE SPECIFIED: 0 PLC ±- 1 PLC ±- 2 PLC ±- 3 PLC ±- 4 PLC ±- ANGLES ±-		MATERIAL: PBT FINISH: -		WEIGHT: - APPLICATION SPEC: 108-5264 CUSTOMER DRAWING	
TOLERANCES UNLESS OTHERWISE SPECIFIED: #2# 10 ± 0.2 30 ± 0.25 30 ± 0.3 ANGLE ± 3°		SCALE: 2:1 SHEET 1 OF 1 REV E1			