

4

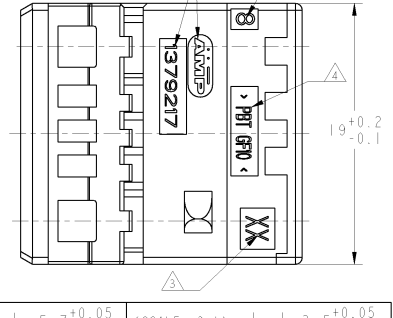
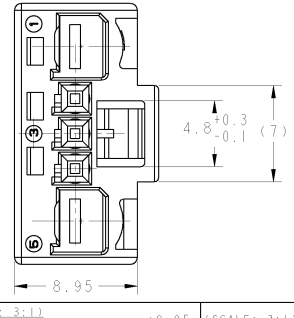
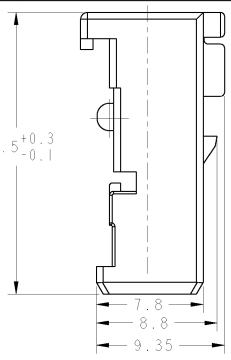
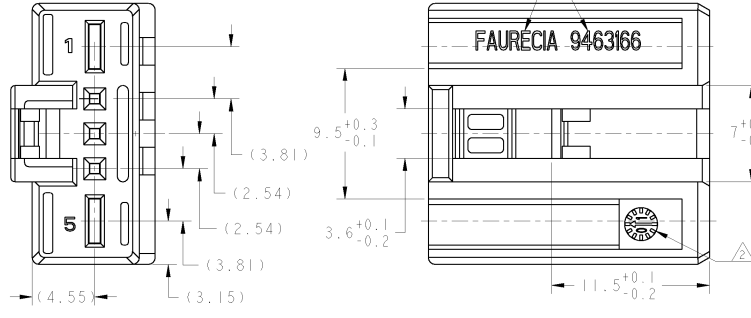
3

2

1

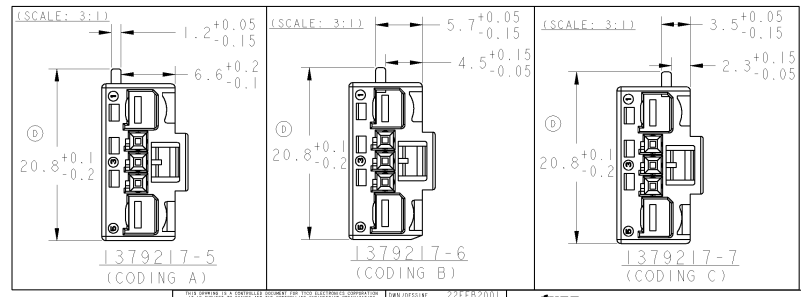
THIS DRAWING IS UNPUBLISHED.
 (C) COPYRIGHT 2001 BY TYCO ELECTRONICS CORPORATION. ALL RIGHTS RESERVED.

- NOTES:
- △ VERSION WITH THE SYMBOL & P/N OF FAURECIA
 - △ VERSION AVEC LE SIGLE & REFERENCE DE FAURECIA
 - △ CODING DATE
 - △ DATE CODE
 - △ REVISION STATUS OF THE MOLD
 - △ REVISION DU MOULE
 - △ MATERIAL IDENTIFICATION
 - △ MARQUAGE DE MATIERE
 - △ CAVITY MARKING
 - △ NUMERO D' EMPREINTE DU MOULE
 - △ LOGO & P/N OF TYCO (AMP)
 - △ LOGO & REFERENCE DE TYCO (AMP)
 - △ VERSION WITHOUT THE SYMBOL & P/N OF FAURECIA
 - △ VERSION SANS LE SIGLE & REFERENCE DE FAURECIA
- 8 FOR THE CONNECTOR INTERFACE, SEE THE DWM OF P/N 208-15621
 POUR L' INTERFACE DE CONNECTEUR, VOIR PLAN DE REF. 208-15621
- 9 CAVITY 1 & 5 SUITABLE TO WIRE SIZE RANGE 0.75 TO 2.5 mm²
 ALVERNES 1 & 5 ADAPTEES AUX JAIGES DE FILS 0.75 A 2.5 mm²
- 10 CAVITY 2,3,4 SUITABLE TO WIRE SIZE RANGE 0.25 TO 0.5 mm²
 ALVERNES 2,3,4 ADAPTEES AUX JAIGES DE FILS 0.25 A 0.5 mm²



REV	DATE	DESCRIPTION	DATE	DWG	APPD
A	UP DATED THE DWM (ADD P/PNS: 1379217-37-4)	28-08-01	NT	S.K	
B	UP DATED THE DWM (ADD THE NOTES 8,9,10)	28SEP2001	NT	S.K	
C	ADD THE NEW P/PNS : 1379217-57-67-7	15DEC2004	NT	J.L	
D	UP DATE THE DRAWING	17FEB2005	NT	J.L	

TYCO P/N (REF. TYCO)	FAURECIA P/N (REF. FAURECIA)	COLOR (COULEUR)	CODING (DETROMPAGE)	PART NUMBER RESTRICTED ONLY TO (REFERENCE RESERVEE UNIQUEMENT A)
1379217-7	-	BLUE (BLEU) ①	C	VALEO △
1379217-6	-	WHITE (BLANC)	B	
1379217-5	-	BLACK (NOIR)	A	
1379217-4	-	WHITE (BLANC)	NEUTRAL (NEUTRE)	FAURECIA △
1379217-3	-	BLACK (NOIR)		
1379217-2	9463166-2	WHITE (BLANC)		
1379217-1	9463166-1	BLACK (NOIR)		



DIMENSIONS: mm WATERPLANT PBT GF10 FINISH: 270	DWM DESIGN: 27FEB2001 DWT: NGUYEN CDR: LAQUERRE APPD APPROV: 27JUN2001 P/N: 1379217-5 (CODING A) P/N: 1379217-6 (CODING B) P/N: 1379217-7 (CODING C)	TYCO ELECTRONICS France SAS BP 39, 93301 CERES-POINTEUSE Cedex
PRODUCT SPEC: 103-15315 APPLICATION SPEC: APPLICATION MFG: 1.80g CUSTOMER DRAWING /PLAN CLIENT	CASE CODE: 100779 SCALE: 5:1 SHEET: 1 OF 1	PORTÉ-CLIPS 3V MGS + 2V MPQ MGS 3W + MPQ 2W SOCKET HOUSING

AMP 1471-6 REV 20040200