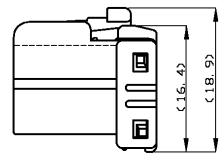
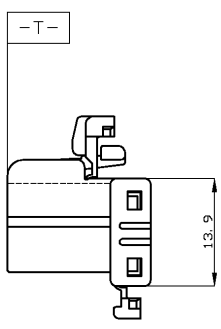
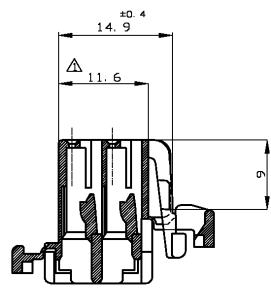
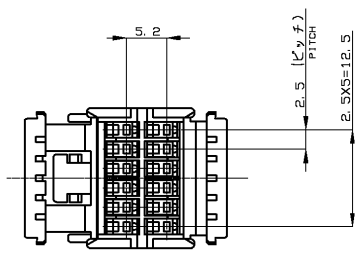
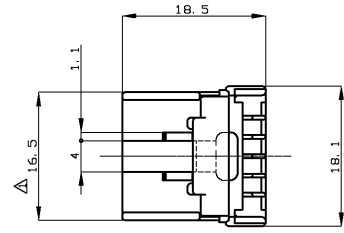
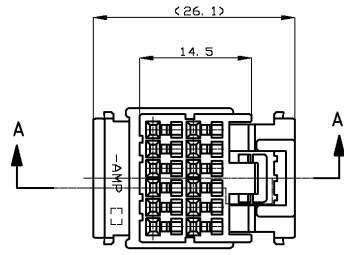


THIS DRAWING IS UNPUBLISHED. RELEASED FOR PUBLICATION  
 © COPYRIGHT BY TYCO ELECTRONICS CORPORATION. ALL RIGHTS RESERVED.

LOC	DIST	REVISIONS					
J	-	P	LTR	DESCRIPTION	DATE	DWN	APVD
		C1	REVISED	ECR-06-018497	03AUG06	MS	KB



青 (BLUE)	174045-5
緑 (GREEN)	174045-4
黒 (BLACK)	174045-2
色 [COLOR]	製品型番 [PART NO.]

△ TO BE MEASURED WITHIN 2mm FROM -T-  
 △ -T- 面より 2mm の範囲で測定

TOLERANCE UNLESS OTHERWISE SPECIFIED	
公差	単位
0 < x < 10	±0.2
10 < x < 30	±0.25
30 < x < 100	±0.3
角度	±3°

DIMENSIONS: 単位: 特		TOLERANCES UNLESS OTHERWISE SPECIFIED: 公差	
mm			
	0 PLC	±	-
	1 PLC	±	-
	2 PLC	±	-
	3 PLC	±	-
	4 PLC	±	-
	ANGLES	±	-
	FINISH		仕上

THIS DRAWING IS A CONTROLLED DOCUMENT.		DWN M.SUGAWARA 03AUG06		Tyco Electronics AMP K.K.	
		CHK K.BETSUI 03AUG06		Kawasaki, Japan	
		APVD K.BETSUI 03AUG06		NAME 12 POSITION PLUG HOUSING	
		PRODUCT SPEC 108-5352,5244		040SERIES MULTI-LOCK CONNECTOR	
		APPLICATION SPEC 取付適用規格		RESTRICTED TO	
MATERIAL PBT		WEIGHT -		SIZE A3 CAGE CODE 00779 DRAWING NO. 174045	
		CUSTOMER DRAWING		SCALE 2:1 SHEET 1 OF 1 REV C1	

AMP 1470-19 REV 31MAR2000

S:\AMP-Kawasaki\Automotive\en32\_automotive\u.a99-0558\ECR\06-018497\c-174045.dwg