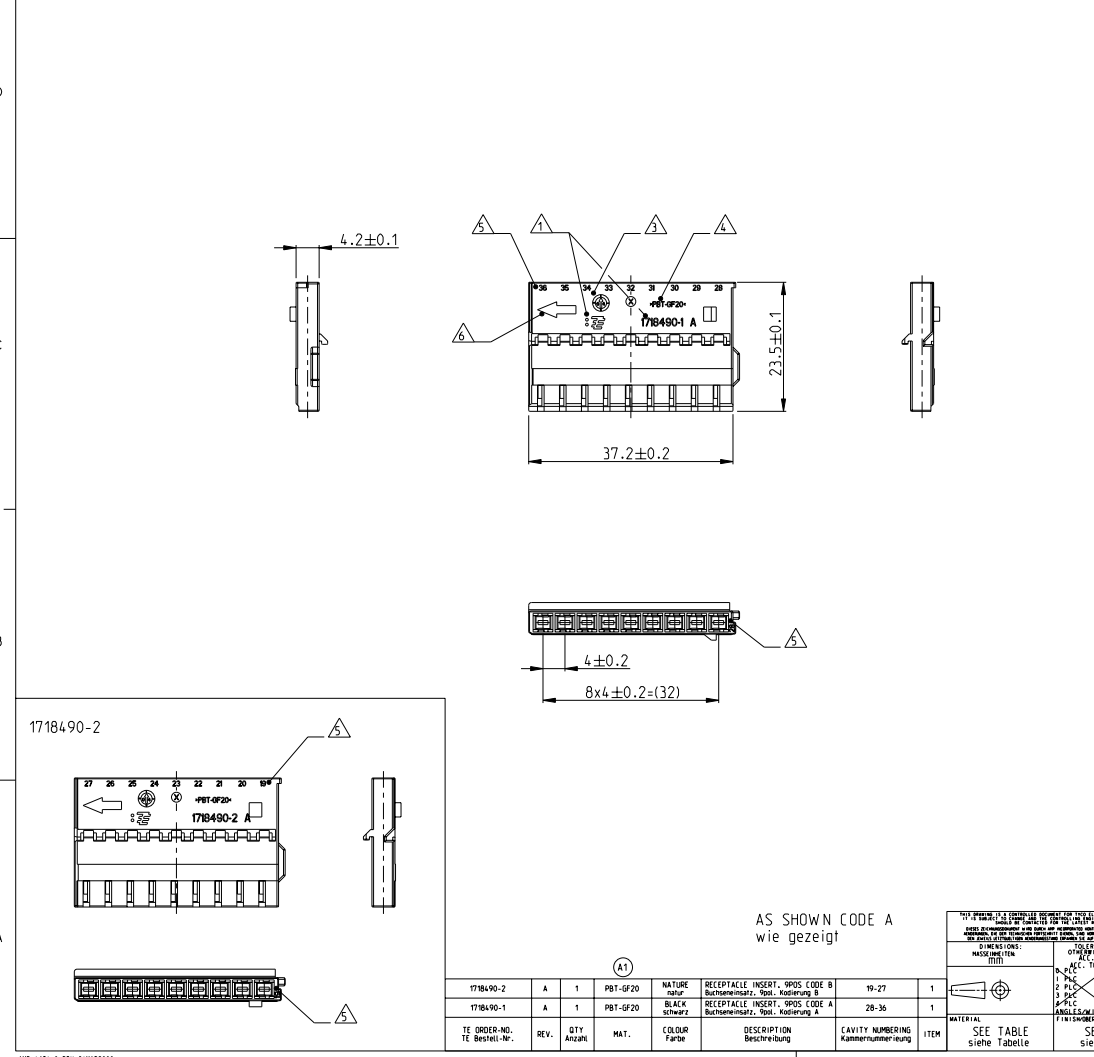
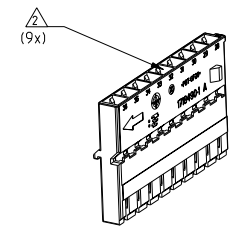


LOC	DIST	REVISIONS			
P	LYR	DESCRIPTION	DATE	DNW	APVD
A1	-	DRAWING CREATED	12AUG2004	FE	CE
A1	-	MATERIAL CHANGED	24AUG2004	FE	CE
A2	-	DRAWING CLARIFICATION SEE PCN E-10-003652	18FEB2010	MP	CE



- NOTES
Bemerkungen
- 1 TYCO ELECTRONICS (TE) LOGO AND TE NUMBER
Tyco Electronics (TE) Logo und TE Nummer
 - 2 CAVITIES MATED WITH AMP MCP1.5K UNSEALED
SEE PRODUCT GROUP DRAWING
TE NO.: 1241436 ; MAX. WIRESIZE: 1.5MM 2FLR
Kontaktkammern passend für AMP MCP1.5K ungeölt
siehe Produktgruppenzeichnung
TE Nr.: 1241436 ; max. Drahtgr. & Benbereich: 1.5mm 2FLR
 - 3 PRODUCTION DATE
Produktionsdatum
 - 4 MATERIAL IDENTIFICATION ACC TO VDA 260
Materialkennzeichnung nach VDA 260
 - 5 CAVITY NUMBERING
Kammernumerierung
 - 6 ASSEMBLY DIRECTION
Montagerichtung
 - 7 BULK PACKAGING IN CORRUGATED BOX
Schüttgut im Versandkarton
 - 8 FITS TO TE CARRIER 1718485
Passend zu TE Träger 1718485



AS SHOWN CODE A
wie gezeigt

REV.	QTY	MAT.	COLOR	DESCRIPTION	CAVITY NUMBERING	ITEM					
TE ORDER-NO. TE Bestell-Nr.	REV.	QTY	ANZAH	MAT.	COLOR	FARBE	DESCRIPTION	BESCHREIBUNG	CAVITY NUMBERING	KAMMERNUMMERUNG	ITEM
1718490-2	A	1		PBT-GF20	NATURE		RECEPTACLE INSERT, 9POS CODE B	Buchsensteckplatz, 9pol., Kodierung B	19-27		1
1718490-1	A	1		PBT-GF20	BLACK	SCHWARZ	RECEPTACLE INSERT, 9POS CODE A	Buchsensteckplatz, 9pol., Kodierung A	28-36		1

DATE	20JUL2004	BY	ELI/CD
DATE	22JUL2004	BY	Eberwein
DATE	18FEB2010	BY	Eberwein
NAME	AMP MCP 1.5K RECEPTACLE INSERT, 9POS. AMP MCP 1.5K Buchsensteckplatz, 9pol.		
SIZE	A2	CASE CODE	00779
SCALE	2:1	DRAWING NO.	1718490
SHEET	1	OF	1
REV	A2	DATE	18FEB2010

TYCO ELECTRONICS (TE) LOGO AND TE NUMBER
Tyco Electronics (TE) Logo und TE Nummer

AMP MCP 1.5K RECEPTACLE INSERT, 9POS.
AMP MCP 1.5K Buchsensteckplatz, 9pol.

DATE 20JUL2004 BY ELI/CD
DATE 22JUL2004 BY Eberwein
DATE 18FEB2010 BY Eberwein

NAME AMP MCP 1.5K RECEPTACLE INSERT, 9POS.
AMP MCP 1.5K Buchsensteckplatz, 9pol.

SIZE A2 CASE CODE 00779 DRAWING NO. 1718490
SCALE 2:1

SHEET 1 OF 1 REV A2

RESTRICTED TO
FOR PUR