

4

3

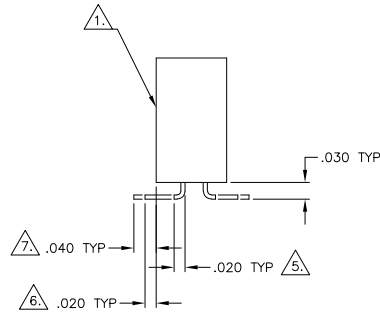
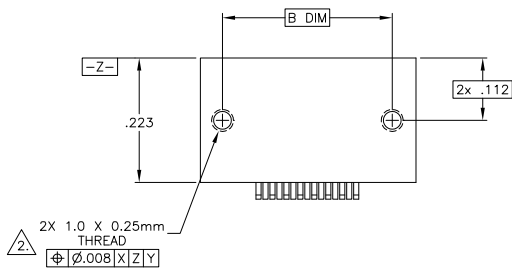
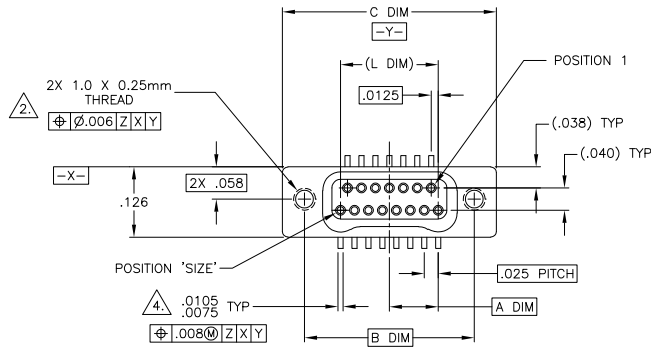
2

1

THIS DRAWING IS UNPUBLISHED. RELEASED FOR PUBLICATION
 © COPYRIGHT BY TYCO ELECTRONICS CORPORATION. ALL RIGHTS RESERVED.

LOC	DIST	REVISIONS				
DF	DO	P	LR	DATE	MIN	APD
		P		UPDATE PER DH2Y-0164-04	12 MAY 04	CAS/MKS

SIZE	A DIM	B DIM	C DIM ±.0050	(L DIM)
09	.050	.229	.3085	(.100)
15	.0875	.304	.3835	(.175)
25	.150	.429	.5085	(.300)
37	.225	.579	.6585	(.450)
51	.3125	.754	.8335	(.625)
65	.400	.929	1.0085	(.800)



- 1. SHELL OPTIONS (TO BE SPECIFIED IN NANONICS PART NUMBER):
 METAL: 6061-T6 ALUMINUM, ELECTROLESS NICKEL PLATED PER MIL-C-26074 (STANDARD) OR GOLD PLATED PER MIL-G-45204
 303 STAINLESS STEEL, PASSIVATED PER SAE-AMS-QQ-P-35
 INSULATOR MATERIAL FOR ALL METAL SHELLS IS LIQUID CRYSTAL POLYMER (LCP) PER MIL-M-24519 OR PER ASTM D5138
- 2. STANDARD 1.0 X 0.25mm MOUNTING AND JACKSCREW THREADS ARE SHOWN FOR REFERENCE ONLY AND MUST BE SPECIFIED IN THE NANONICS PART NUMBER WHEN REQUIRED. 1.2 X 0.25mm THREADS ALSO AVAILABLE.
- 3. MOUNTING HARDWARE IS AVAILABLE WITH THIS CONFIGURATION (NOT SHOWN). HARDWARE MUST BE SPECIFIED IN THE NANONICS PART NUMBER. CONSULT TYCO ELECTRONICS FOR DETAILS.
- 4. SMT LEADS ARE BeCu, TIN LEAD PLATED 60/40 COMPOSITION PER SAE-AMS-P-81728.
- 5. NANONICS TERMINATION CODE: L4 6. NANONICS TERMINATION CODE: L42 7. NANONICS TERMINATION CODE: L44
- 8. THIS DRAWING PREVIOUSLY IDENTIFIED AS NANONICS N10138/232

THIS DRAWING IS A CONTROLLED DOCUMENT.		DIM: D. RYAN 21 APR 92 OK: E. PAULLUS 23 AUG 99 APP: M. STORRY 3 APR 01 PRODUCT SPEC: _____ APPLICATION SPEC: _____ HEIGHT: _____	Tyco Electronics Tyco Electronics Corporation Harrisburg, PA 17105
DIMENSIONS: INCHES: 0 PLG ± .005 1 PLG ± .010 2 PLG ± .005 3 PLG ± .005 4 PLG ± .010 ANGLES: ± .1	DIMENSIONS: INCHES: 0 PLG ± .005 1 PLG ± .010 2 PLG ± .005 3 PLG ± .005 4 PLG ± .010 ANGLES: ± .1	RECEPTACLE ASSEMBLY, VERTICAL SURFACE MOUNT, TWO ROW DUALLOBE, PLASTIC OR METAL	
MATERIAL: SEE NOTES		SIZE: A2 CASE CODE: 00779 DRAWING NO: C=1589484 RESTRICTED TO: _____	
FINISH: SEE NOTES		CUSTOMER DRAWING SCALE: 8:1 SHEET: 1 OF 2 REV: P	

AMP 1471-9 REV 31MM2000

1589484

A

4

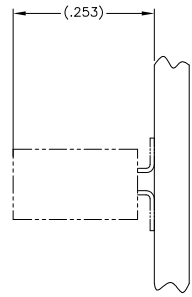
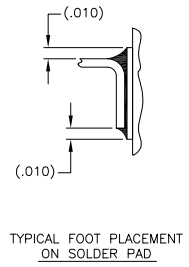
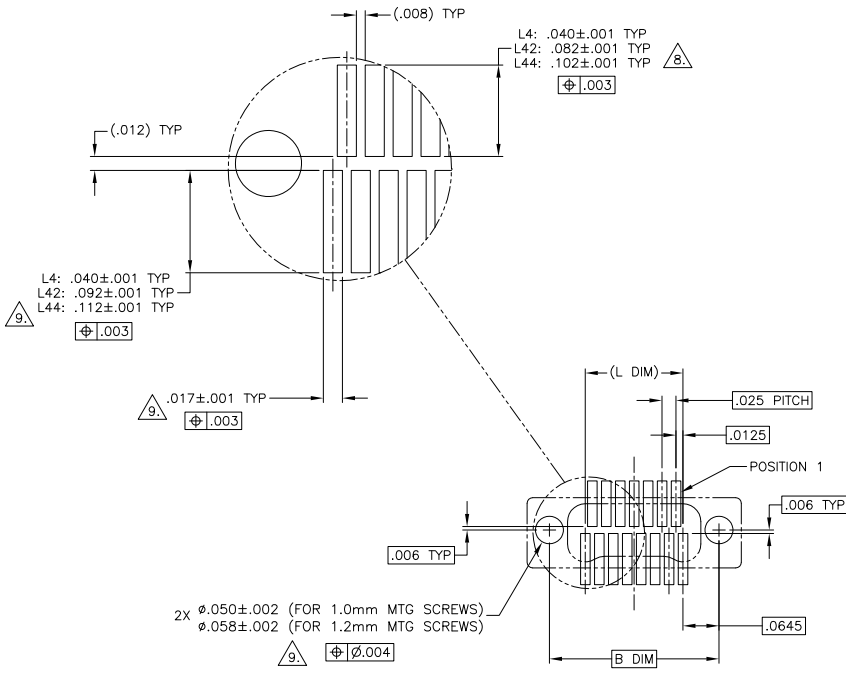
3

2

1

THIS DRAWING IS UNPUBLISHED. RELEASED FOR PUBLICATION. BY TYCO ELECTRONICS CORPORATION. ALL RIGHTS RESERVED.

LOC	DIST	REVISIONS				
DF	DO	P	LR	DATE	MIN	APD
		P		UPDATE PER DH2Y-0164-04	12 MAY 04	CAS/MKS



TYPICAL PCB LAYOUT

POSITIONAL TOLERANCES FOR BASIC DIMENSIONED FEATURES ARE RELATIVE TO FIDUCIALS OR SOME SIMILAR DATUM REFERENCE DEFINED BY THE PCB DESIGNER.

THIS DRAWING IS A CONTROLLED DOCUMENT.		DR: D. RYAN 21 APR 92	Tyco Electronics Corporation	
		OK: S. PAULUS 23 AUG 99	Harrisburg, PA 17105	
DIMENSIONS: INCHES		APD: M. STORRY 3 APR 01	RECEPTACLE ASSEMBLY, VERTICAL SURFACE MOUNT, TWO ROW DUALOBE, PLASTIC OR METAL	
TOLERANCES UNLESS OTHERWISE SPECIFIED:		NAME	SIZE	CHG CODE (DRAWING NO)
0 PLC	± .005		A2	00779
1 PLC	± .004		C=	1589484
2 PLC	± .003			
3 PLC	± .002			
4 PLC	± .001			
ANGLES	± .001			
MATERIAL		HEIGHT		
		CUSTOMER DRAWING	SCALE	8:1
			SHEET	2 OF 2
			REV	P

AMP 1471-9 REV 31MM2000

1589484