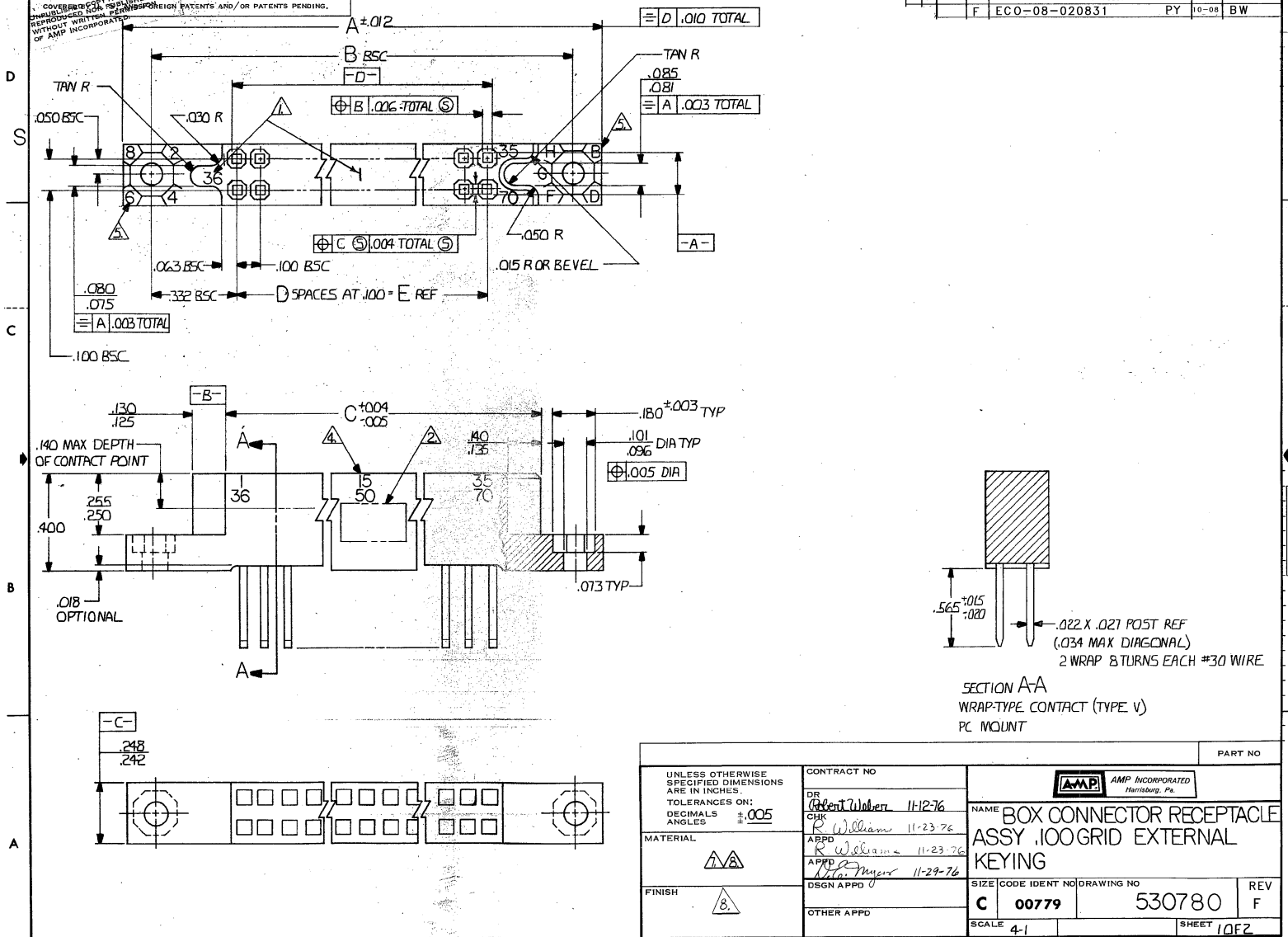


DRAWING MADE IN THIRD ANGLE PROJECTION

© COPYRIGHT 1978 BY AMP INCORPORATED, HARRISBURG, PA.  
 ALL INTERNATIONAL RIGHTS RESERVED. AMP INCORPORATED PRODUCTS  
 COVERED BY PATENTS AND/OR PATENTS PENDING.  
 REPRODUCED WITHOUT WRITTEN PERMISSION OF AMP INCORPORATED.

REVISIONS						
P	F	ZONE	LTR	DESCRIPTION	DATE	APPROVED
	F			ECO-08-020831	PY 10-08	BW



UNLESS OTHERWISE SPECIFIED DIMENSIONS ARE IN INCHES. TOLERANCES ON: DECIMALS $\pm .005$ ANGLES $\pm .005$	CONTRACT NO	AMP INCORPORATED Harrisburg, Pa.	PART NO	
	DR <i>Robert Wolcott 11-12-76</i>		NAME BOX CONNECTOR RECEPTACLE ASSY .100 GRID EXTERNAL KEYING	REV F
MATERIAL $\Delta 8$	CHK <i>R. Williams 11-23-76</i>	APPD <i>R. Williams 11-23-76</i>	SIZE C	CODE IDENT NO 00779
FINISH $\Delta 8$	DSGN APPD <i>D. Meyer 11-29-76</i>	OTHER APPD	DRAWING NO 530780	SHEET 1022
SCALE 4-1			SHEET 1022	

CUSTOMER DRAWING

530780

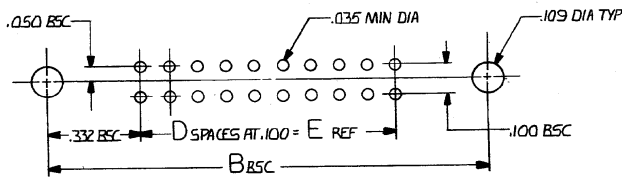
DRAWING MADE IN THIRD ANGLE PROJECTION

© COPYRIGHT 19 BY AMP INCORPORATED, HARRISBURG, PA.  
ALL INTERNATIONAL RIGHTS RESERVED. AMP INCORPORATED PRODUCTS  
COVERED BY U. S. AND FOREIGN PATENTS AND/OR PATENTS PENDING.

UNPUBLISHED COPY NOT  
REPRODUCED FOR PUBLICATION  
WITHOUT WRITTEN PERMISSION  
OF AMP INCORPORATED

REV	ZONE	LTR	DESCRIPTION	DATE	APPROVED
			SEE SHEET 1 OF 2		

- ▲ NUMBERS AND LINES INDICATING EVERY FIVE CAVITIES MARKED ON MATING FACE.
- ▲ AMP PART NUMBER DATE CODE, 00779 & MILITARY PART NUMBER MARKED IN THIS AREA. SIDE OPTIONAL
- 3. MUST MEET ALL APPLICABLE REQUIREMENTS OF MIL-C-55302.
- ▲ NUMBERS INDICATING EVERY FIVE CAVITIES MARKED ON SIDE
- ▲ KEY POSITION IDENTIFICATION MOLDED ON SURFACES SHOWN.
- 6. USE EXTERNAL KEY NUMBER 530341-1 MATES WITH PART NUMBER 530339.
- ▲ HOUSING MATERIAL: DIALLYL PHTHALATE COLOR: BLUE PER MIL-M-14 TYPE SDG-F.
- ▲ CONTACT MATERIAL: BERYLLIUM COPPER .000050 GOLD OVER NICKEL.



RECOMMENDED PRINTED CIRCUIT BOARD LAYOUT

M55302/27-221	71	140	6.900	69	7.165	7.565	7.855	140	F-530780-3
M55302/27-220	68	134	6.600	66	6.865	7.265	7.555	134	F-530780-2
M55302/27-219	66	130	6.400	64	6.665	7.065	7.355	130	F-530780-1
M55302/27-218	64	126	5.900	59	6.165	6.565	6.855	126	F-530780-0
M 55302/27-162	56	110	5.400	54	5.665	6.065	6.355	110	530780-9
M 55302/27-161	55	100	4.900	49	5.165	5.565	5.855	100	-8
M 55302/27-160	46	90	4.400	44	4.665	5.065	5.355	90	-7
M 55302/27-159	41	80	3.900	39	4.165	4.565	4.855	80	-6
M 55302/27-158	36	70	3.400	34	3.665	4.065	4.355	70	-5
M 55302/27-157	31	60	2.900	29	3.165	3.565	3.855	60	-4
M 55302/27-156	26	50	2.400	24	2.665	3.065	3.355	50	-3
M 55302/27-155	21	40	1.900	19	2.165	2.565	2.855	40	-2
M 55302/27-154	16	30	1.400	14	1.665	2.065	2.355	30	530780-1
M 55302									
PART NUMBER	IDENTIFICATION NO	CONTRACT NO	E	D	C	B	A	NO OF CONTACTS	PART NO

UNLESS OTHERWISE SPECIFIED DIMENSIONS ARE IN INCHES. TOLERANCES ON: DECIMALS ± .005 ANGLES	CONTRACT NO DR Robert Wilson 11-15-76 CHK R. Wilson 11-23-76 MATERIAL R. Wilson 11-23-76 APPD R. Wilson 11-23-76 APPROV R. Wilson 11-23-76 DSGN APPR OTHER APPD	AMP INCORPORATED Harrisburg, Pa.	NAME BOX CONNECTOR RECEPTACLE ASSY .100 GRID EXTERNAL KEYING
FINISH 8.	SIZE CODE IDENT NO DRAWING NO C 00779 530780	REV F	SCALE 4:1 SHEET 2 OF 2

CUSTOMER DRAWING

530780