

4

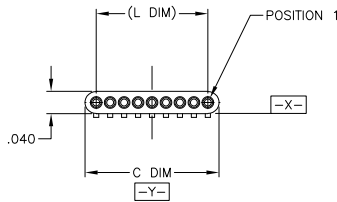
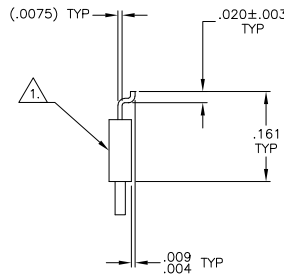
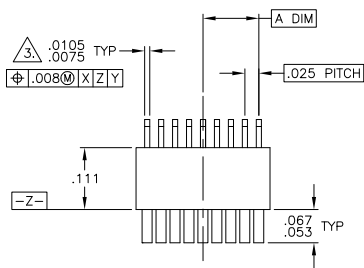
3

2

1

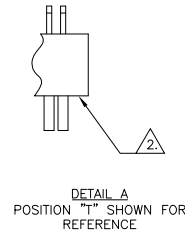
THIS DRAWING IS UNPUBLISHED. RELEASED FOR PUBLICATION. BY TYCO ELECTRONICS CORPORATION. ALL RIGHTS RESERVED.

LOC	DIST	REVISIONS		
DF	DO	P	LR	DATE
		R	UPDATE PER DH2Y-000B-04	9 JAN 04



SIZE	A DIM	C DIM	(L DIM)
04	.0375	.115	(.075)
09	.100	.240	(.200)
15	.175	.390	(.350)

25	.300	.640	(.600)
37	.450	.940	(.900)
51	.625	1.290	(1.250)



- T ○○○○○○○● POSITION 1
- U ○○○○○○○● POSITION 2
- V ○○○○○○○● POSITION 3
- W ●○○○○○○● POSITION 1, AND SECOND TO LAST POSITION
- Y ●○○○○○○● POSITION 1, AND THIRD TO LAST POSITION
- Z ●○○○○○○● POSITION 2, AND THIRD TO LAST POSITION

1. INSULATOR MATERIAL: LCP (LIQUID CRYSTAL POLYMER) PER ASTM D5138
2. OPTIONAL POLARIZATION POSITION SHOWN FOR REFERENCE ONLY. IF POLARIZATION GUIDE POST(S) ARE REQUIRED ON THE MATING PLUG, THE CORRESPONDING LOCATION MUST BE SPECIFIED IN THE NANONICS RECEPTACLE PART NUMBER. THE CONTACT CAVITY IS LEFT EMPTY FOR ACCEPTANCE OF THE PLUG GUIDE POST.
3. SMT LEADS ARE BeCu, TIN LEAD PLATED 60/40 COMPOSITION PER SAE-AMS-P-81728
4. TERMINATION CODE: L2
5. WHEN ORDERING THESE SIZES, FIRST CONSULT TYCO ELECTRONICS/NANONICS FOR ADDITIONAL INFORMATION.
6. DUE TO THE SMALL AREA OF THIS STRIP RECEPTACLE, CONSIDER SURFACE MOUNTING THE STRIP PLUG (1589451).
7. THIS DRAWING PREVIOUSLY IDENTIFIED AS NANONICS N10138/032

2. POLARIZING POSITIONS, SEE DETAIL A.

THIS DRAWING IS A CONTROLLED DOCUMENT.

DESIGNED BY: D. RYAN	DATE: 20 APR 92		Tyco Electronics Corporation
OK'D BY: S. BURGER	DATE: 09 FEB 93		Harrisburg, PA 17105
DESIGNED BY: M. STORRY	DATE: 25 APR 01	RECEPTACLE ASSEMBLY, UNSHROUDED STRIP, HORIZONTAL SMT, PLASTIC	
MATERIAL: SEE NOTES	FINISH: SEE NOTES	SIZE: A2	CAGE CODE: 00779
CUSTOMER DRAWING		SCALE: 8:1	SHEET: 1 OF 2

AMP 1471-9 REV 31MM2000

1589452

A

4

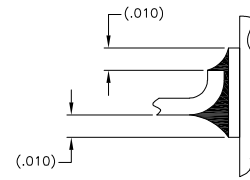
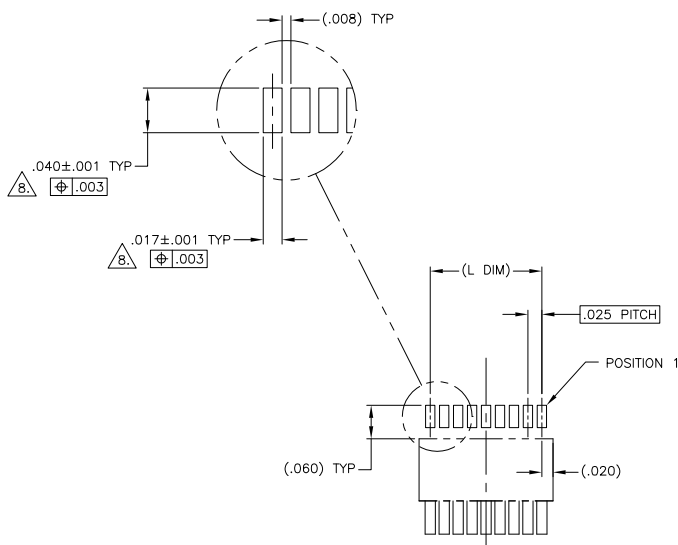
3

2

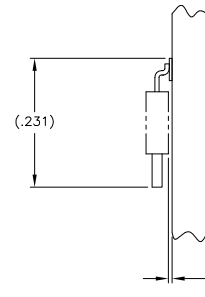
1

THIS DRAWING IS UNPUBLISHED. RELEASED FOR PUBLICATION  
 © COPYRIGHT BY TYCO ELECTRONICS CORPORATION. ALL RIGHTS RESERVED.

LOC		DIST		REVISIONS			
DF	DO	P	LTR	DESCRIPTION	DATE	MIN	APD
		R		UPDATE PER DH2Y-0008-04	9 JAN 04	CAS	MKS



TYPICAL FOOT PLACEMENT ON SOLDER PAD



OPTIONAL (.005) THICK ADHESIVE

SIZE .09 SHOWN FOR REFERENCE

TYPICAL PCB LAYOUT

POSITIONAL TOLERANCES FOR BASIC DIMENSIONED FEATURES ARE RELATIVE TO FIDUCIALS OR SOME SIMILAR DATUM REFERENCE DEFINED BY THE PCB DESIGNER.

THIS DRAWING IS A CONTROLLED DOCUMENT.		DN	-	<b>Tyco Electronics</b>	Tyco Electronics Corporation
		OK	-		Harrisburg, PA 17105
DIMENSIONS: INCHES		APD	-	NAME	RECEPTACLE ASSEMBLY, UNSHROUDED, STRIP, HORIZONTAL SMT, PLASTIC
TOLERANCES UNLESS OTHERWISE SPECIFIED:		PRODUCT SPEC	-	APPLICATION SPEC	SIZE CASE CODE DRAWING NO
0 PLG	± .005	HEIGHT	-	A2	00779 C=1589452
1 PLG	± .005	FINISH	-	CUSTOMER DRAWING	RESTRICTED TO
2 PLG	± .005				
3 PLG	± .005				
4 PLG	± .005				
ANGLES	± .005				
					SCALE: 8:1 SHEET 2 OF 2 REV R

AMP 1471-9 REV 31MM2000

1589452

A