

4

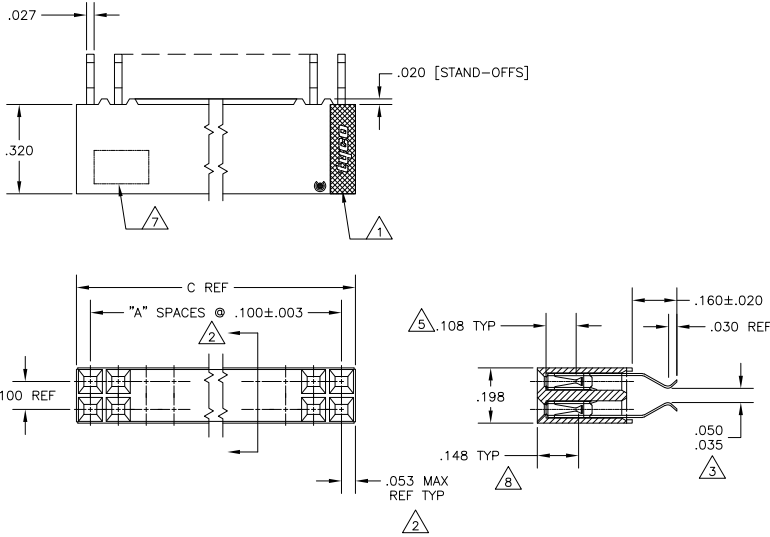
3

2

1

THIS DRAWING IS UNPUBLISHED. RELEASED FOR PUBLICATION  
 © COPYRIGHT BY TYCO ELECTRONICS CORPORATION. ALL RIGHTS RESERVED.

LOC	DIST	REVISIONS					
AD	00	P	LTR	DESCRIPTION	DATE	BY	APPD
		U	EC	063C 0025 05	16MAR05	MB	JO
		U1		REVISED PER ECO-09-020774	24AUG09	KK	AE



- △ TYCO TRADEMARK AND CSA LOGO ARE MOLDED INTO HOUSING.
- △ THESE DIMENSIONS PERTAIN TO CAVITY #'S ONLY - NOT TO CONTACT LOCATIONS
- △ THESE DIMENSIONS ARE DESIGNED FOR .0625±.0075 THICK PC BOARD
- △ DUPLEX PLATED, .00030 GOLD ON CONTACT AREA, .000150-.000300 BRIGHT TIN-LEAD OR TIN ON SOLDER LEADS, ALL OVER .000050 NICKEL.
- △ POINT OF MEASUREMENT FOR PLATING THICKNESS (MEASURED INSIDE CONTACT BEAMS)
- △ NO PART NUMBER MARKING REQUIRED FOR THIS PART
- △ PART NUMBER AND DATE CODE MARKED IN APPROXIMATE LOCATION SHOWN.
- △ POINT OF CONTACT MEASUREMENT.
- △ HOUSING; GLASS FILLED, FLAME RETARDANT POLYESTER  
COLOR-BLACK
- △ CONTACTS: PHOSPHOR BRONZE.
- △ DUPLEX PLATED: .000030 GOLD ON CONTACT AREA, .000150-.000300 MATTE TIN ON SOLDER LEADS, ALL OVER .000050 MINIMUM NICKEL.
- △ ROHS 2002/95/EC COMPLIANT
- △ OBSOLETE PARTS: OBSOLETE CIS STREAMLINING PER D.RENAUD/D.SINISI

△	3.200	3.100	31	64	△	7-87331-9
△	3.100	3.000	30	62	△	7-87331-8
△	2.900	2.800	28	58	△	7-87331-7
△	2.800	2.700	27	56	△	7-87331-6
△	2.300	2.200	22	46	△	7-87331-5
△	1.800	1.700	17	36	△	7-87331-4
△	1.600	1.500	15	32	△	7-87331-3
△	1.100	1.000	10	22	△	7-87331-2
△	.600	.500	05	12	△	7-87331-1
△	2.700	2.600	26	54	△	6-87331-9
△	1.700	1.600	16	34	△	6-87331-8
△	1.300	1.200	12	26	△	6-87331-7
△	1.200	1.100	11	24	△	6-87331-6
△	.700	.600	06	14	△	6-87331-5
△	2.100	2.000	20	42	△	6-87331-4
△	2.600	2.500	25	52	△	6-87331-3
△	2.200	2.100	21	44	△	6-87331-2
△	3.000	2.900	29	60	△	6-87331-1
△	1.500	1.400	14	30	△	6-87331-0
△	.500	.400	04	10	△	5-87331-9
△	2.500	2.400	24	50	△	5-87331-8
△	2.400	2.300	23	48	△	5-87331-7
△	4.400	4.300	03	8	△	5-87331-6
△	.800	.700	07	16	△	5-87331-5
△	1.000	.900	09	20	△	5-87331-4
△	1.400	1.300	13	28	△	5-87331-3
△	1.900	1.800	18	38	△	5-87331-2
△	2.000	1.900	19	40	△	5-87331-1
△	3.200	3.100	31	64	△	2-87331-9
△	3.100	3.000	30	62	△	2-87331-8
△	2.900	2.800	28	58	△	2-87331-7
△	2.800	2.700	27	56	△	2-87331-6
△	2.300	2.200	22	46	△	2-87331-5
△	1.800	1.700	17	36	△	2-87331-4
△	1.600	1.500	15	32	△	2-87331-3
△	1.100	1.000	10	22	△	2-87331-2
△	.600	.500	05	12	△	2-87331-1
△	2.700	2.600	26	54	△	1-87331-9
△	1.700	1.600	16	34	△	1-87331-8
△	1.300	1.200	12	26	△	1-87331-7
△	1.200	1.100	11	24	△	1-87331-6
△	.700	.600	06	14	△	1-87331-5
△	2.100	2.000	20	42	△	1-87331-4
△	2.600	2.500	25	52	△	1-87331-3
△	2.200	2.100	21	44	△	1-87331-2
△	3.000	2.900	29	60	△	1-87331-1
△	1.500	1.400	14	30	△	1-87331-0
△	.500	.400	04	10	△	87331-9
△	2.500	2.400	24	50	△	87331-8
△	2.400	2.300	23	48	△	87331-7
△	4.400	4.300	03	8	△	87331-6
△	.800	.700	07	16	△	87331-5
△	1.000	.900	09	20	△	87331-4
△	1.400	1.300	13	28	△	87331-3
△	1.900	1.800	18	38	△	87331-2
△	2.000	1.900	19	40	△	87331-1

FINISH	C	B	A	NO OF POSN	PART NUMBER
△					

THIS DRAWING IS A CONTROLLED DOCUMENT.		BY J. KNAUB 06-01-94	Tyco Electronics Corporation
DRAWN BY A. GABANY 28-06-94		CHK BY A. GABANY 28-06-94	Harrisburg, Pa 17105-3608
DIMENSIONS: INCHES		APPROVED BY A. GABANY 28-06-94	NAME
OTHER DIMENSIONS: MILLIMETERS		APPLICATION SPEC: -	SIZE CASE CODE (DRAWING NO): -
MATERIAL: -		REIGHT: -	RESTRICTED TO: -
FINISH: -		CUSTOMER DRAWING	SCALE: 1:1 SHEET 1 OF 1 REV U1

AMP 1471-9 REV 31MM2000