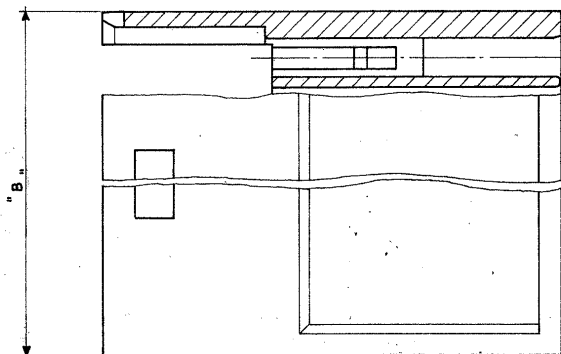
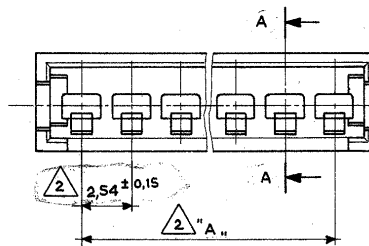
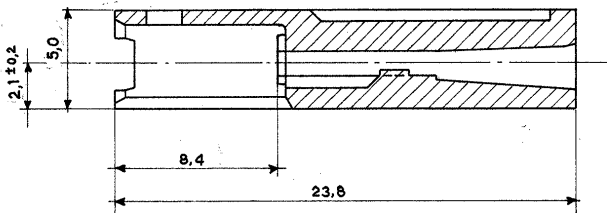


SCALA NON IMPEGNATIVA
(DO NOT SCALE)
DIMENSIONI IN
DIMENSIONS IN

METRIC

PROIEZIONE EUROPEA
(EUROPEAN PROJECTION)

Sezione A-A
(Section)



Note: (Notes)

- 1 Noryl (UL94-VI) Colore Nero (Black Colour).
- 2 Tolleranza non Cumulativa. (Non-Cumulative Tolerance.)
- 3 PA 6.6 45% g.f. masterizzato Rosso (PA 6.6 45% g.f. masterized - RED)
- 4 OBSOLETE PARTS: OBSOLETE CIS STREAMLINING PER D.RENAUD/D.SINISI

N° Pos.	Part. Number	Dim. "A"	Dim. "B"	Mat.
4	284072-1	7,62	12,5	
2	284071-1	2,54	7,4	
22	280626	53,34	58,2	
15	280635	35,56	40,4	
12	280634	27,94	32,0	
10	280633	22,86	27,7	
9	280632	20,32	25,1	
8	280631	17,78	22,6	
6	280630	12,70	17,5	
4	280629	7,62	12,5	
2	280628	2,54	7,4	

PINTURA - COLORE (FINISH - COLOUR)	MATERIALE (MATERIAL)	NUMERO (PART NUMBER)
CUSTOMER DWG. FOR REFERENCE ONLY	DISEGNO PER CLIENTE SOLO PER RIFERIMENTO	
© COPYRIGHT 1986 BY AMP INCORPORATED, HARRISBURG, PA ALL INTERNATIONAL RIGHT RESERVED AMP PRODUCTS MAY BE COVERED BY U.S. AND FOREIGN PATENT AND/OR PATENT PENDING	TOLLERANZE SE NON DIVERSAMENTE SPECIFICATE (TOLERANCES UNLESS OTHERWISE SPECIFIED)	
± 0,3	ANGOLI (ANGLES) ± 2°	SCALE (SCALE) 5:1
H3 REVISED PER ECO-10-000445 KK JAN 86	DESCRIZIONE (DESCRIPTION) AMP MODU II Pin Housing, Single Row, Crimp Snap-In	
H2 5.0 COLORE ROSSO PER PROIEZIONE EUROPEA (PA 6.6 45% g.f. masterizzato Rosso) (PA 6.6 45% g.f. masterized - RED)	LOCI SIZE (DWG NO.) 280628	
H4 2.1 COLORE ROSSO PER PROIEZIONE EUROPEA (PA 6.6 45% g.f. masterizzato Rosso) (PA 6.6 45% g.f. masterized - RED)	REV. (REV.) H3	
2 Revised note	SFOGLIO (SHEET) 1 OF 1	
1 Revised and Redrawn	APP. (APP.)	
REV. (REVISION RECORD)	DIS. DATA (DR) (DATE)	

DISTRIBUZIONE (PRINT DIST)